

Job Openings and Labor Turnover (JOLTS)

Guy Podgornik

Association of Public Data Users Conference

Washington, DC

September 22, 2011



www.bls.gov

Labor Market Data

- Employment
 - ▶ Current Employment Statistics (CES)
- Unemployment
 - ▶ Current Population Survey (CPS)
- Labor dynamics—worker flows
 - ▶ Job Openings and Labor Turnover (JOLTS)

JOLTS Data Elements

- Employment (pay period of the 12th)
- Job openings (last day of the month)
- Hires (full month)
- Total Separations (full month)
 - ▶ Quits
 - ▶ Layoffs and Discharges
 - ▶ Other Separations

JOLTS Survey Scope

**16,000 establishments
sampled from:**

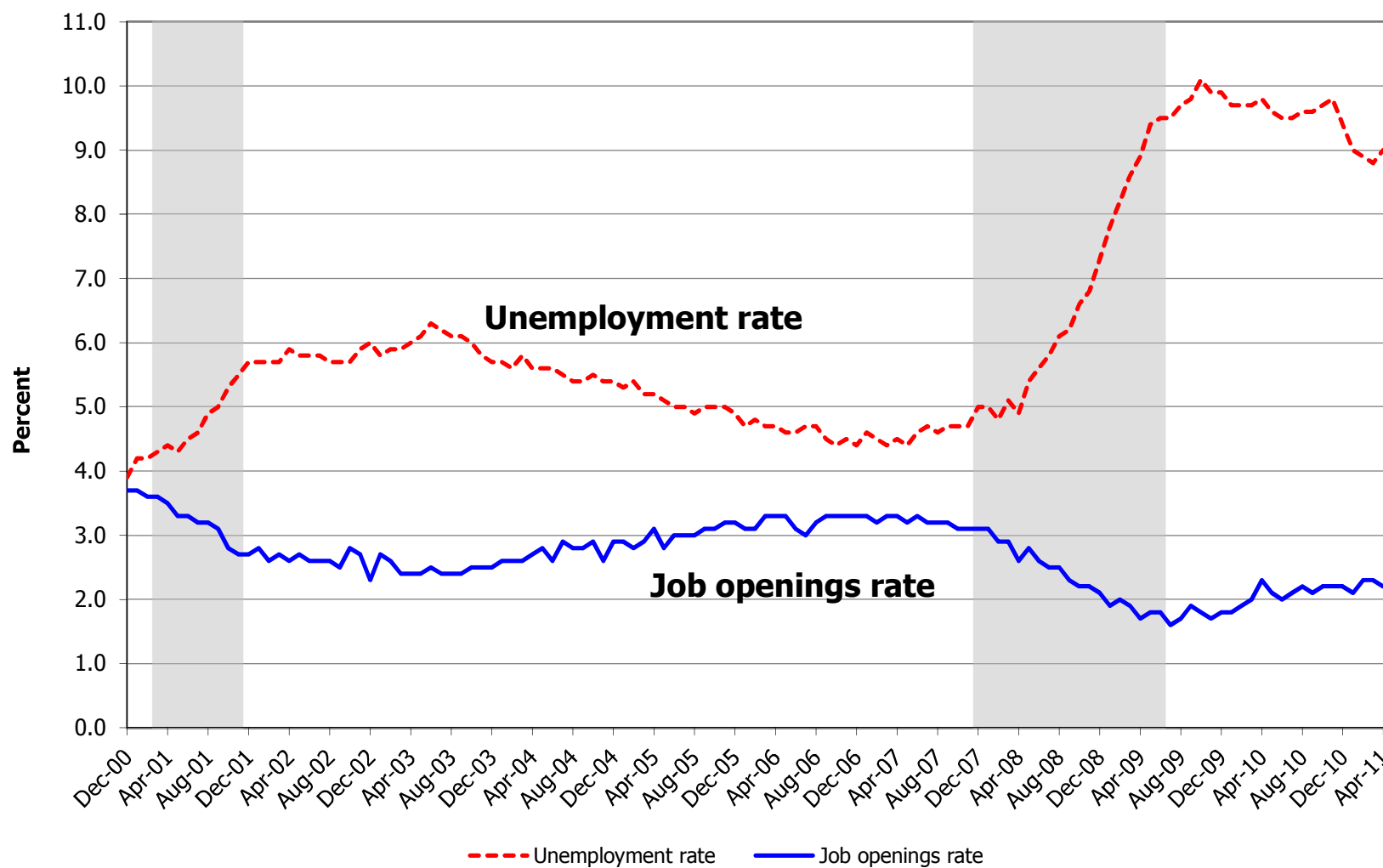
- Nonagricultural industries
- All 50 states and the District of Columbia
- Private sector and government
- All size classes



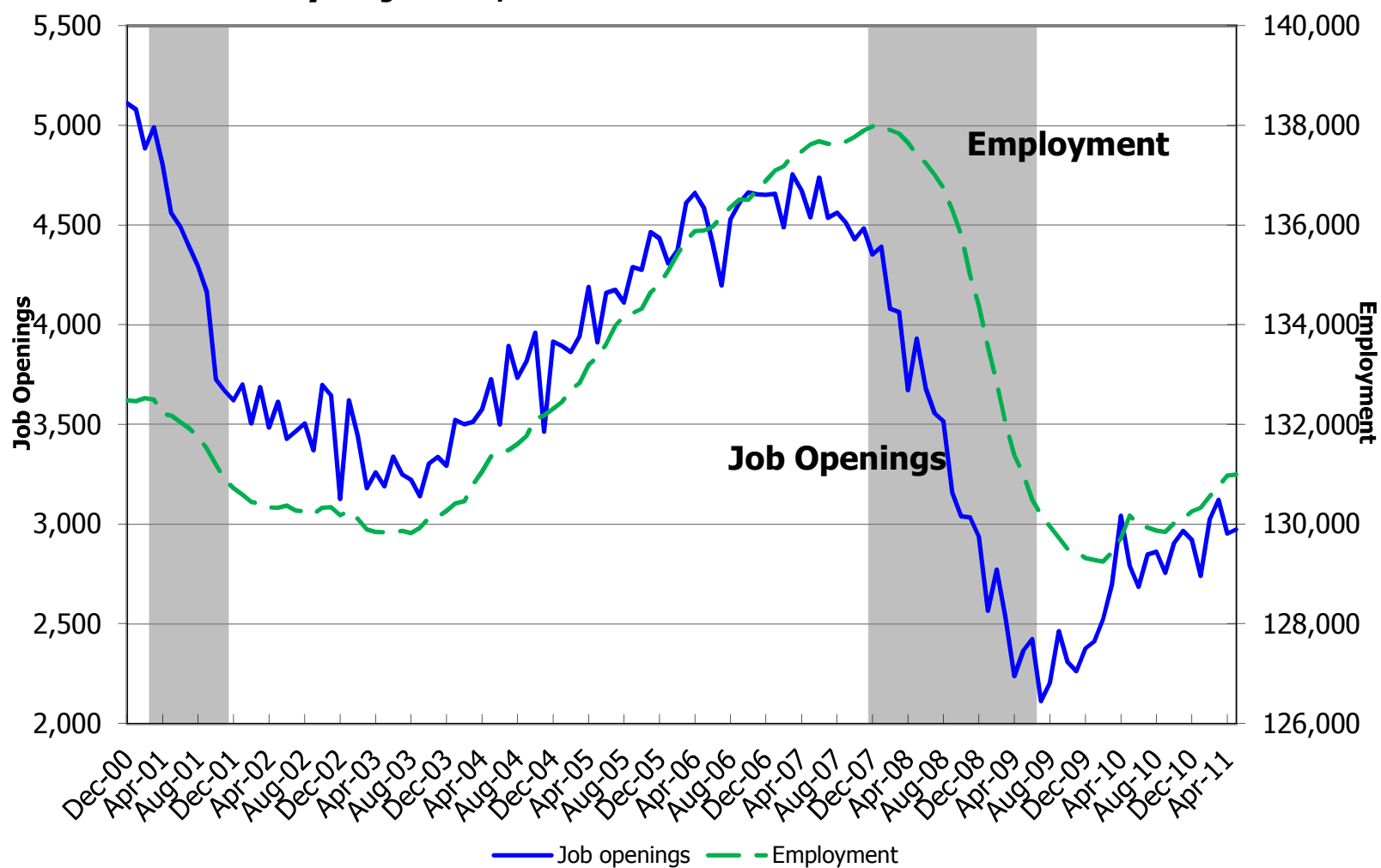
Uses of Demand and Churn Data

- Identify types of unemployment
 - ▶ Structural: mismatch of workers/jobs
 - ▶ Frictional: movement of workers
 - ▶ Cyclical: business cycle
- Indicate health of the labor market
 - ▶ Job openings high or low?
 - ▶ Quits high or low?
 - ▶ Layoffs high or low?
- May have leading indicator properties

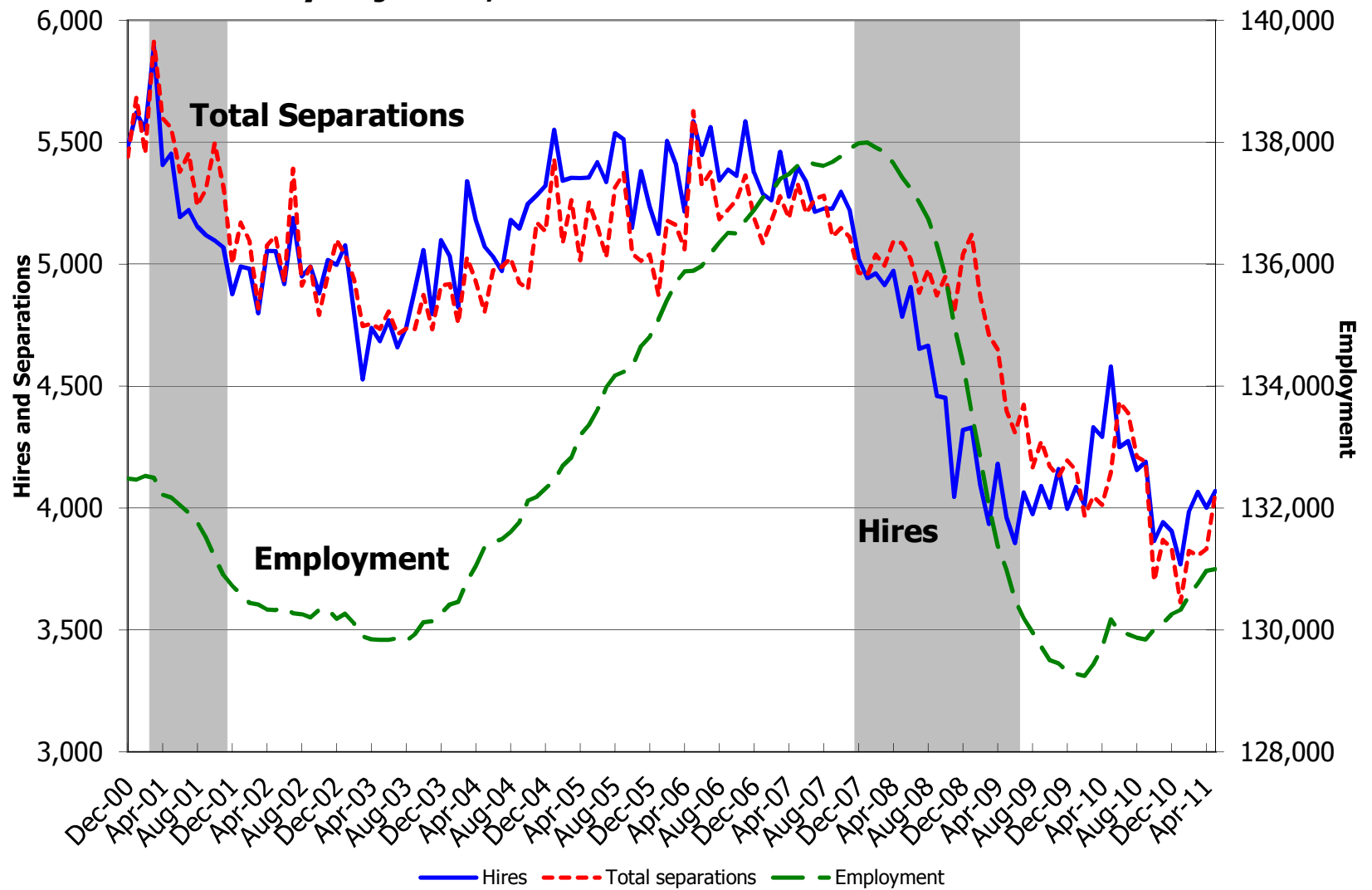
The unemployment rate and job openings rate Seasonally adjusted



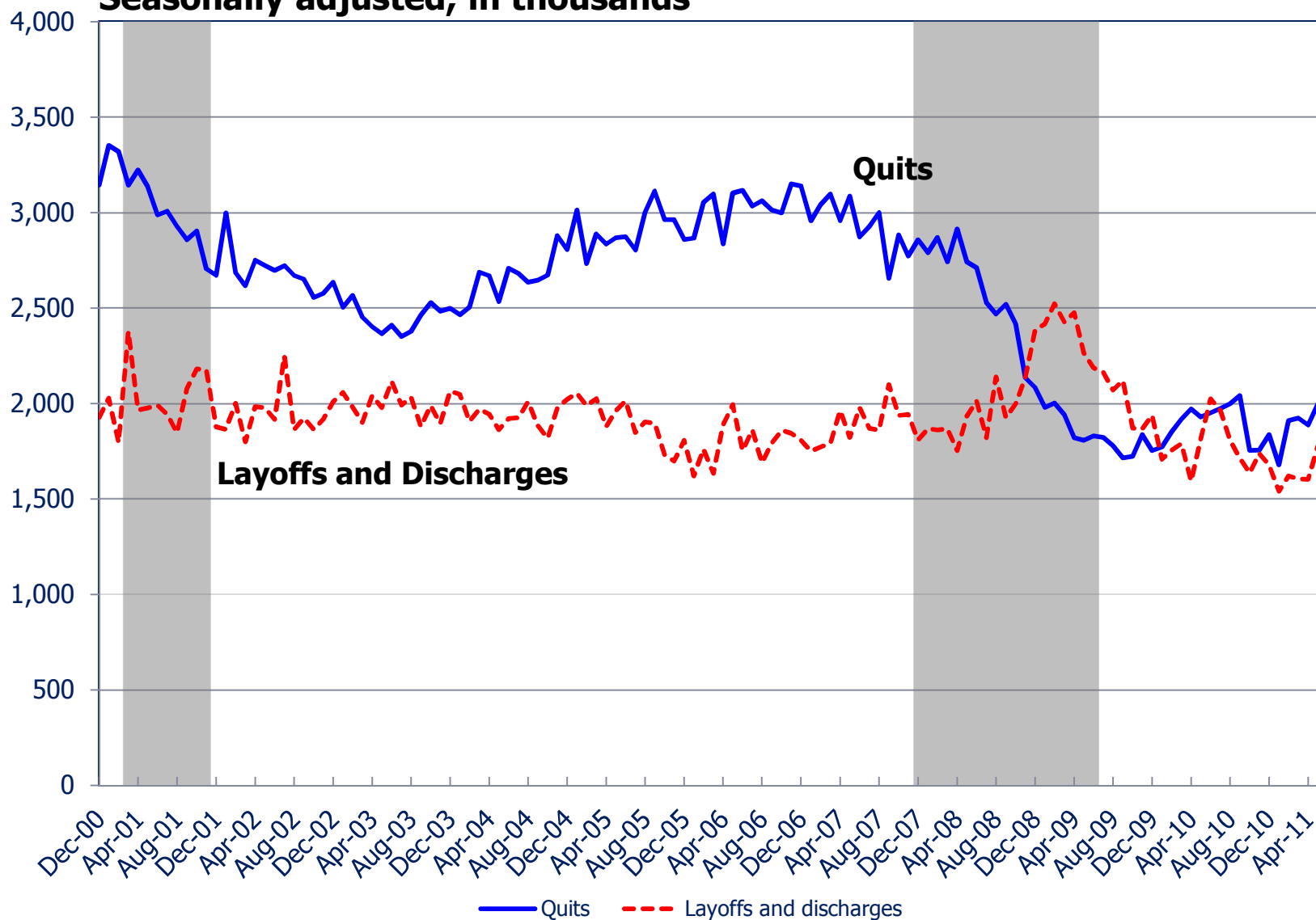
Job openings and employment Seasonally adjusted, in thousands



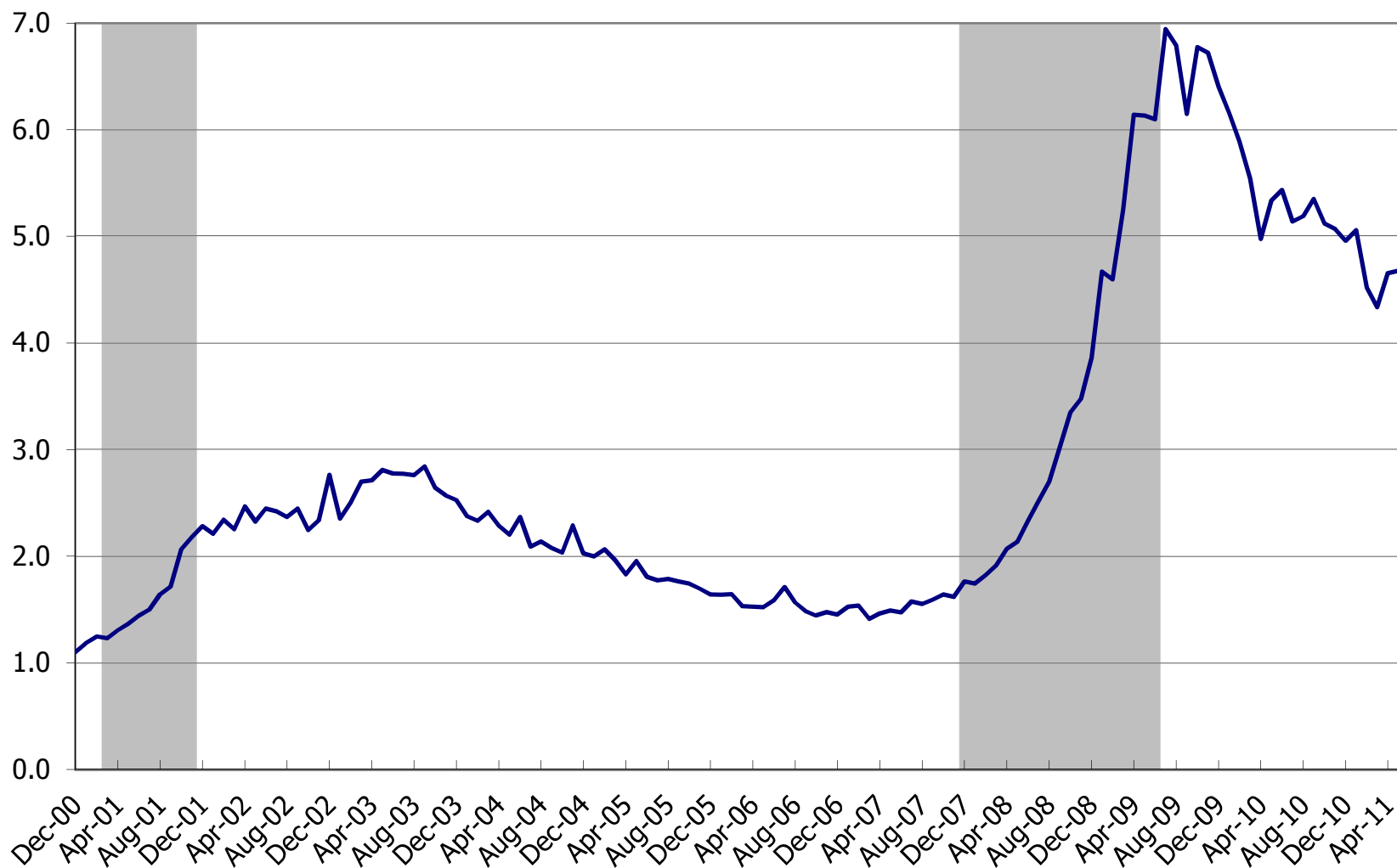
Hires, total separations, and employment Seasonally adjusted, in thousands



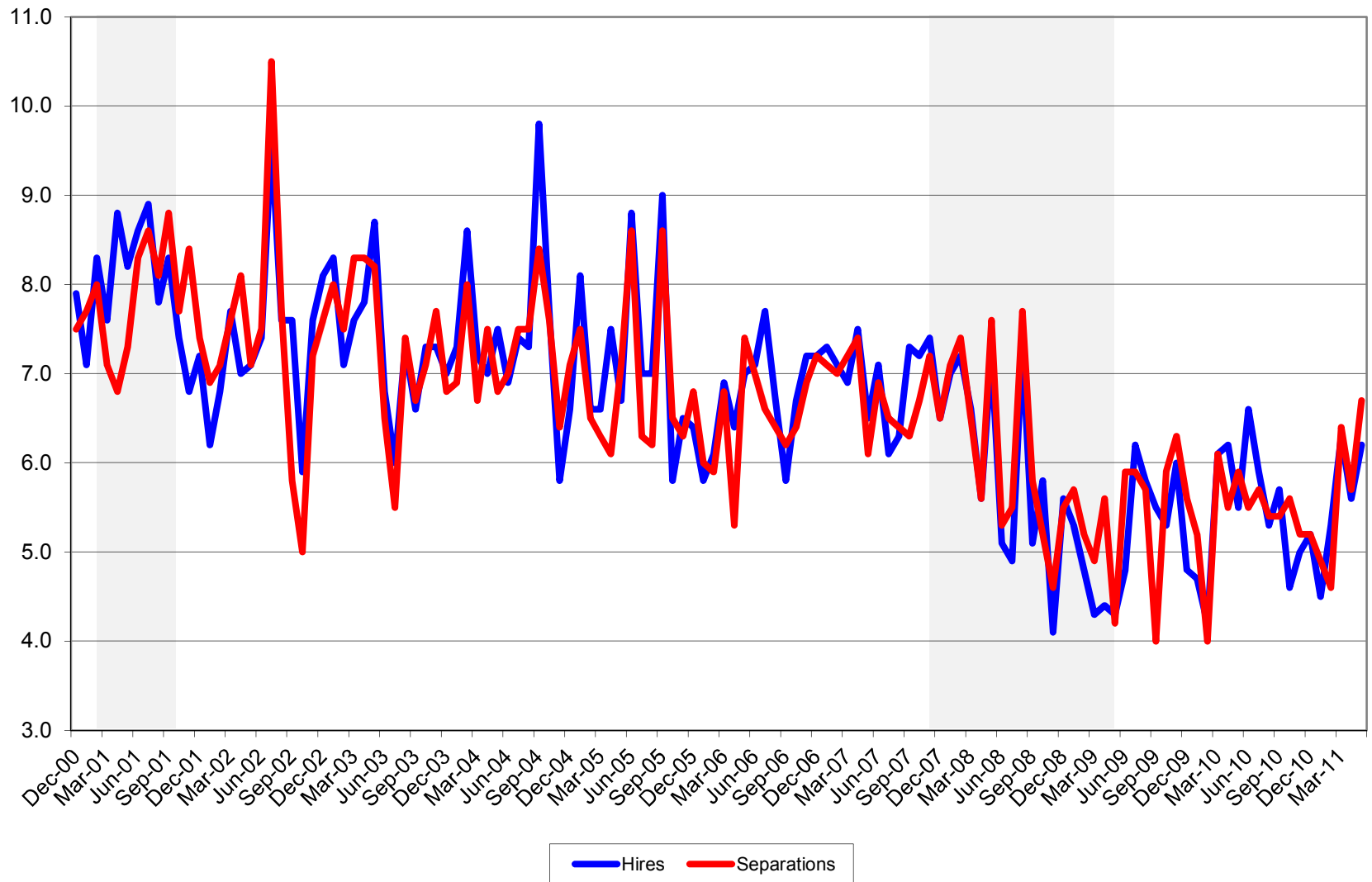
Quits and layoffs and discharges Seasonally adjusted, in thousands



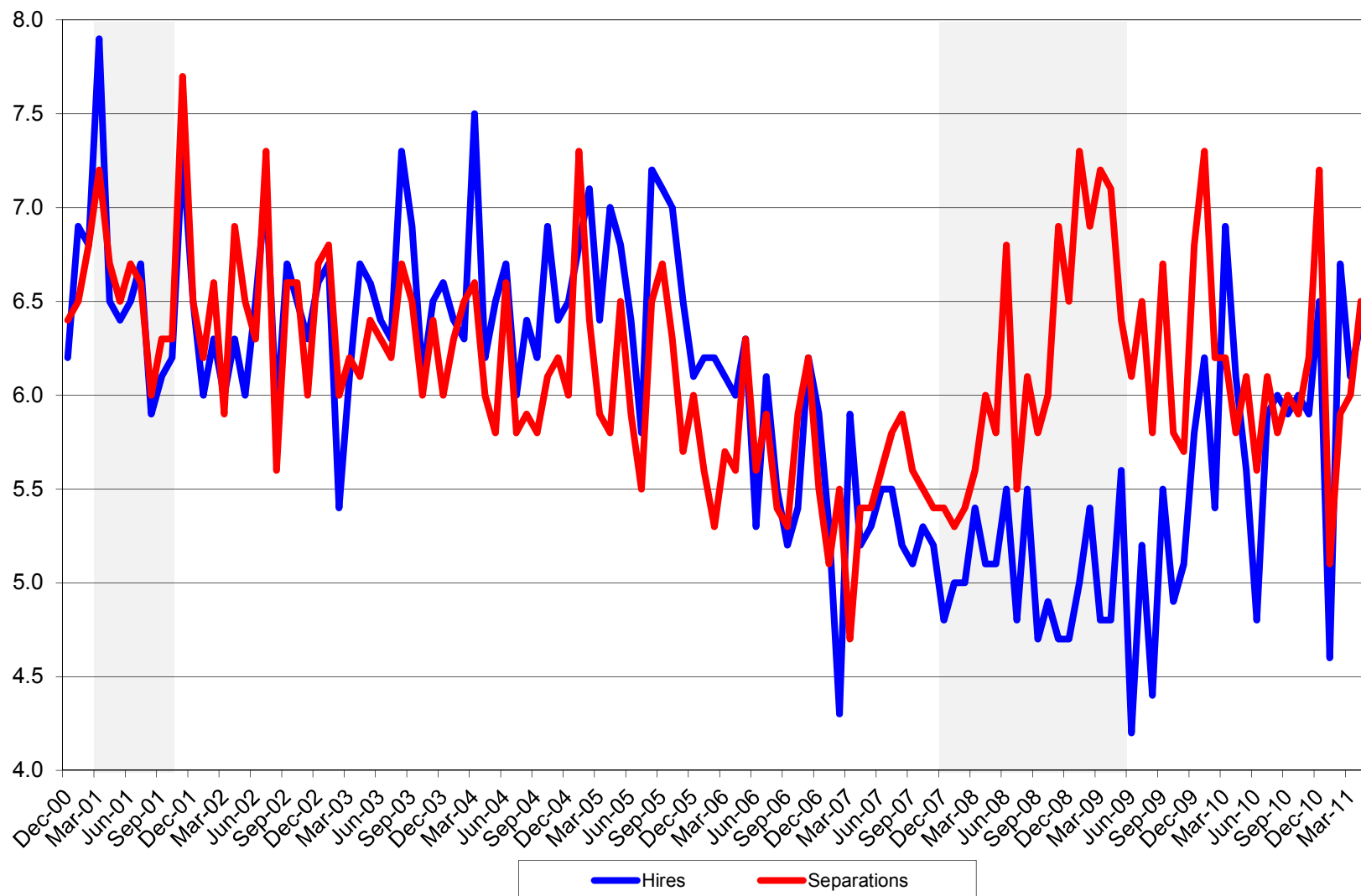
Number of unemployed persons per job opening Seasonally adjusted



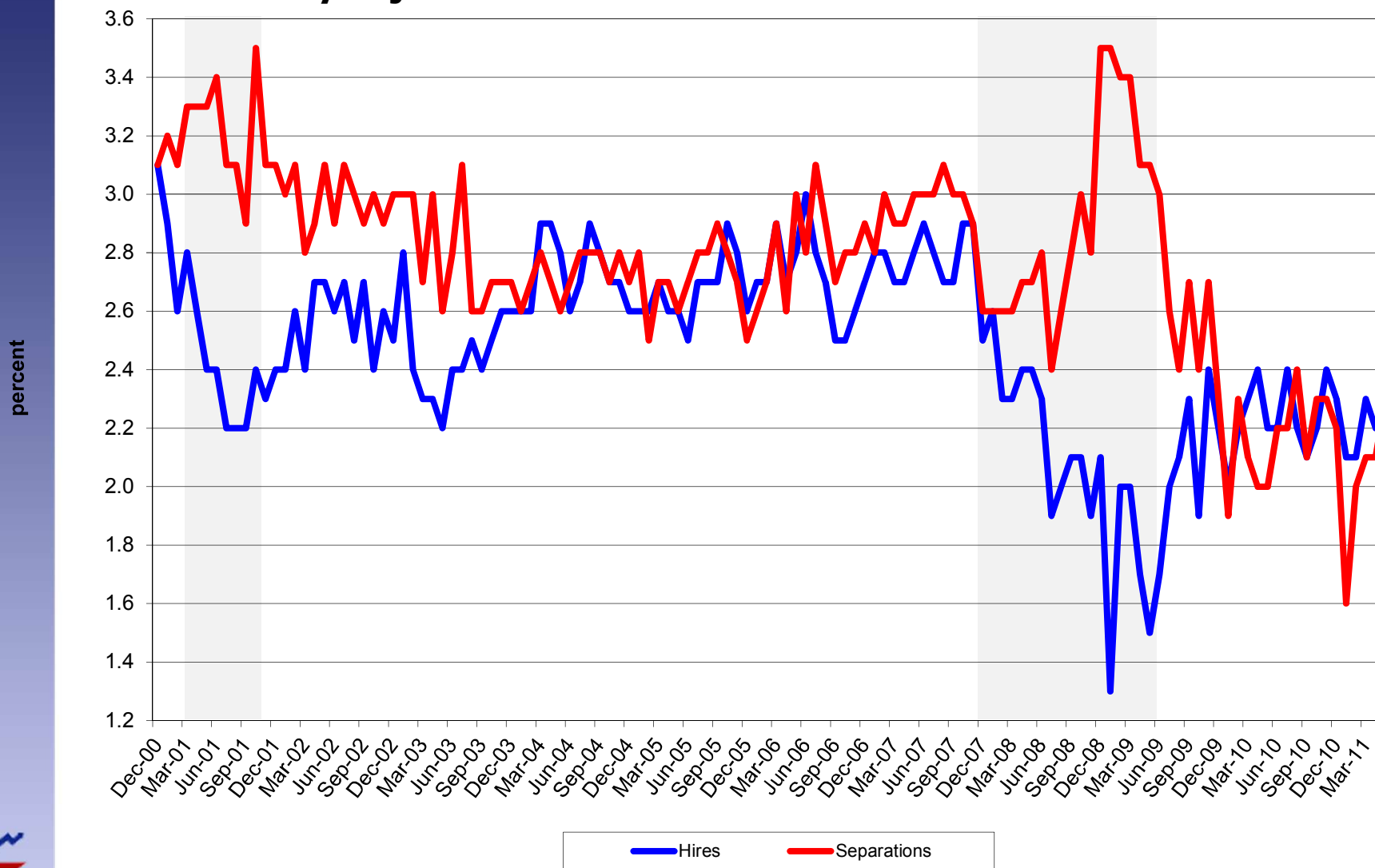
Arts, Entertainment, and Recreation hires and separations rates Seasonally Adjusted



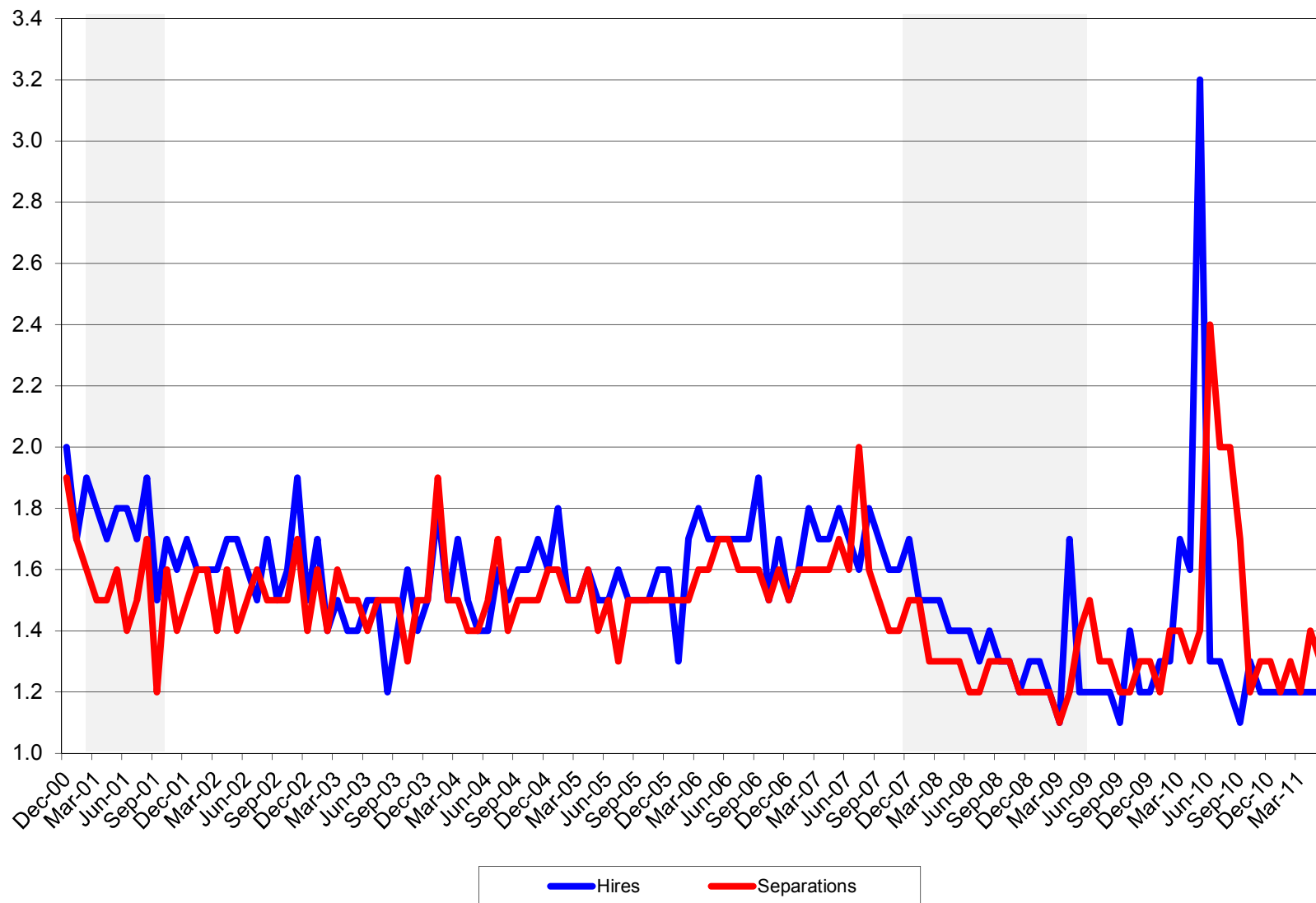
Construction hires and separations rates Seasonally Adjusted



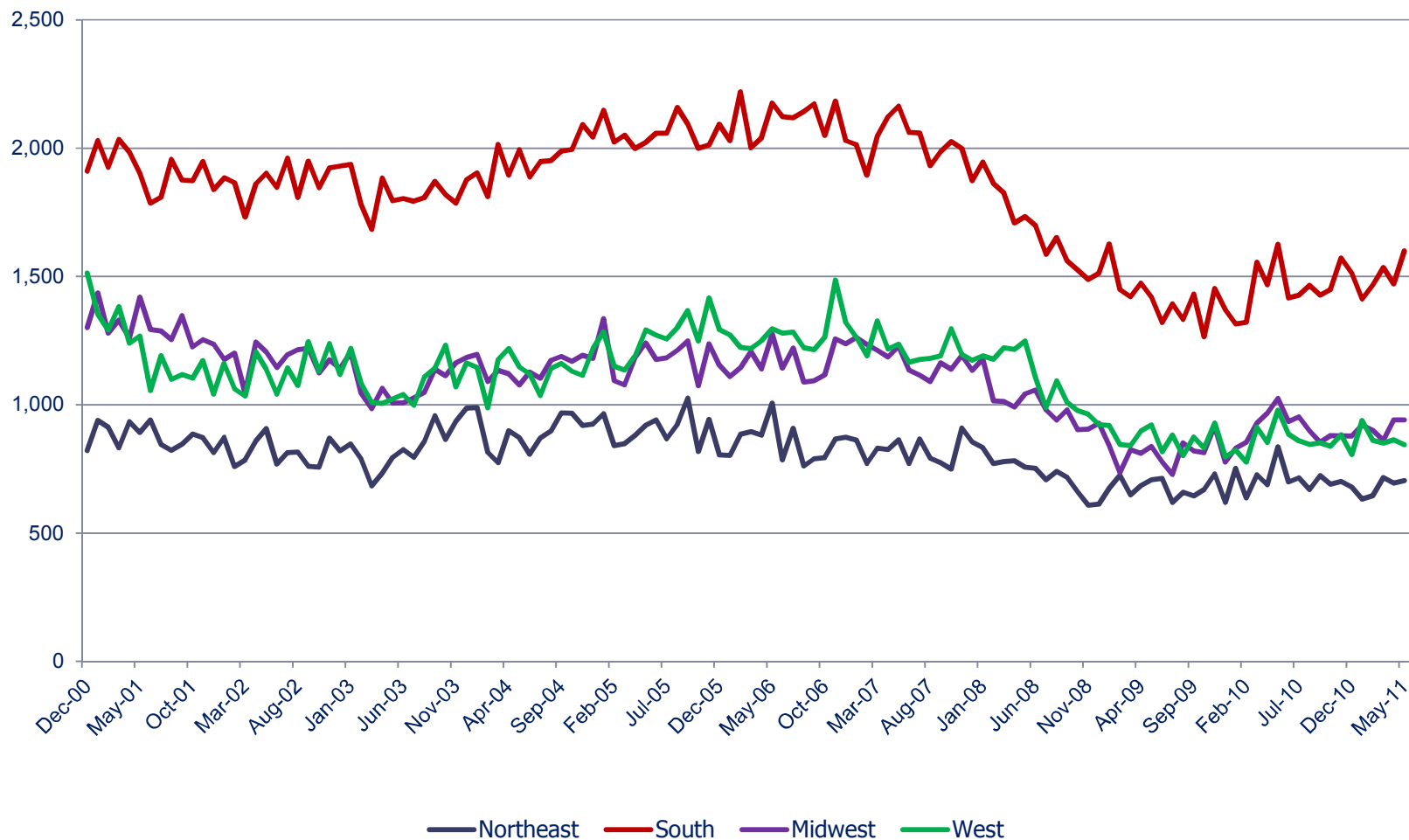
Manufacturing hires and separations rates Seasonally Adjusted



Government hires and separations rates Seasonally Adjusted



Hires Levels by Region Seasonally Adjusted



JOLTS Developments

- JOLTS Symposium, Dec. 10, 2010
- How can we improve JOLTS?
 - ▶ With what we already collect
 - Size class estimates
 - ▶ Future survey enhancements

Contact Information

Guy Podgornik

Economist

Bureau of Labor Statistics

Job Openings and Labor Turnover Survey

www.bls.gov/jlt

JoltsInfo@bls.gov

(202) 691-5870



www.bls.gov