



IT'S IN OUR HANDS



Local Employment Dynamics

All About Jobs

Free Data Online 24/7

- Quarterly Workforce Indicators (QWI Online)
- OnTheMap_
- Industry Focus
- Older Worker Profiles

To Inform

- Workforce Development
- Emergency Preparedness
- Transportation Planning
- Business Location Decisions

USCENSUSBUREAU
Helping You Make Informed Decisions

www.census.gov

Local Employment Dynamics' Latest Data Visualization Tool *OnTheMap for Emergency Management: Hurricanes*

Colleen D. Flannery
Association of Public Data Users
20-21 September 2010
Washington, DC

United States™
Census
2010



IT'S IN OUR HANDS

A Picture = 1,000 Words

A Picture = 100,000 Data Cells

This storm has is still far out in the Atlantic, but it has already achieved Category 4 strength. Hurricane Ike has a **sustained wind speed** of 145 miles per hour. There is still a lot of warm deep water in **Hurricane Ike's projected path** before it approaches the United States. Hurricane paths can be tricky to predict 5-7 days in advance, but right now it looks as it Hurricane Ike's projected path will take it right over the Bahamas. Unlike **Haiti** or **Cuba**, the islands of the Bahamas are too small to cause considerable weakening of Hurricane Ike as it coast.

09/03	18 GMT	21.1	51.9	85	979	Category 1 Hurricane
09/04	00 GMT	21.8	53.5	120	956	Category 3 Hurricane
09/04	06 GMT	22.4	55.0	145	935	Category 4 Hurricane
09/04	12 GMT	23.0	56.4	140	937	Category 4 Hurricane
09/04	18 GMT	23.4	57.7	135	940	Category 4 Hurricane
09/05	00 GMT	23.6	59.0	135	944	Category 4 Hurricane
09/05	06 GMT	23.6	60.4	135	949	Category 4 Hurricane
09/05	12 GMT	23.5	61.9	120	954	Category 3 Hurricane
09/05	18 GMT	23.2	63.4	115	959	Category 3 Hurricane
09/06	00 GMT	22.8	64.9	115	962	Category 3 Hurricane



United States™
Census
2010



Why Do We Care?

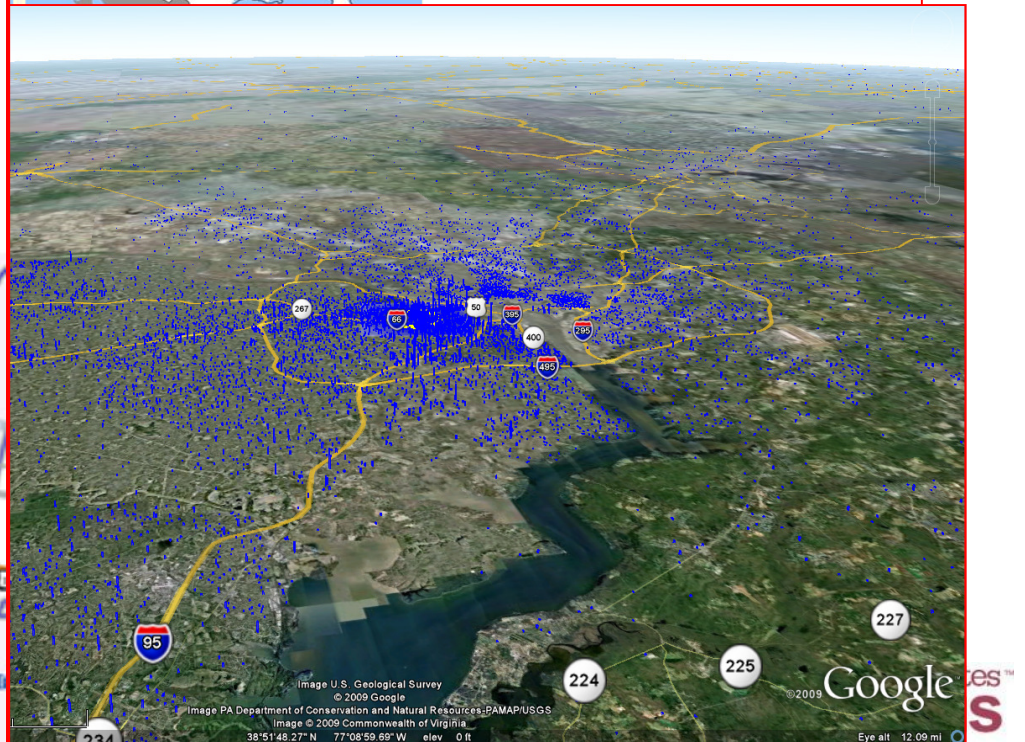
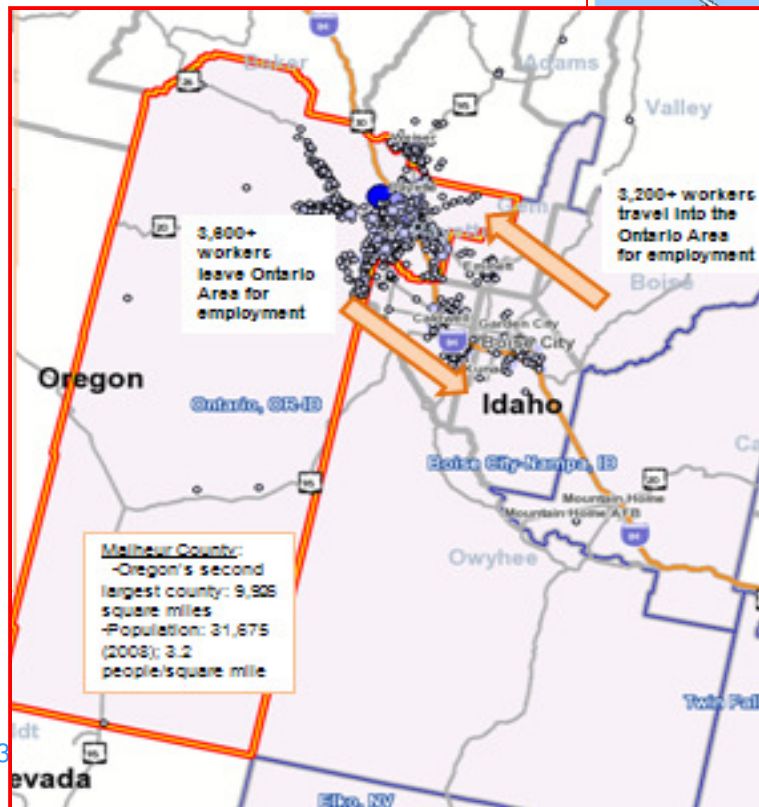
IT'S IN OUR HANDS

- It shows the story
- It's fun
- It engages the user



OnTheMap™

LED's online dynamic mapping and reporting tool





IT'S IN OUR HANDS

Federal Government Embraces Visualization

Presidential Open Government Initiative

<http://www.whitehouse.gov/open>

Dept. of Commerce Open Government Plan

<http://open.commerce.gov/iii-transparency>

Census Bureau Visualization Plan

<http://lehd.did.census.gov>

LED Data Visualization Plan

<http://lehd.did.census.gov>

LED: Data Visualization Plan

Local Employment Dynamics

All About Jobs

August 5, 2010

Data visualization tools have emerged since 2007 as important new ways to present statistical information to make it more understandable for data users. In 2006 the Local Employment Dynamics (LED) partnership pioneered a data visualization effort with the first release of its ⁴ web-based OnTheMap tool, which graphically illustrates the relationship between jobs and

United States™
Census
2010



Natural Disasters

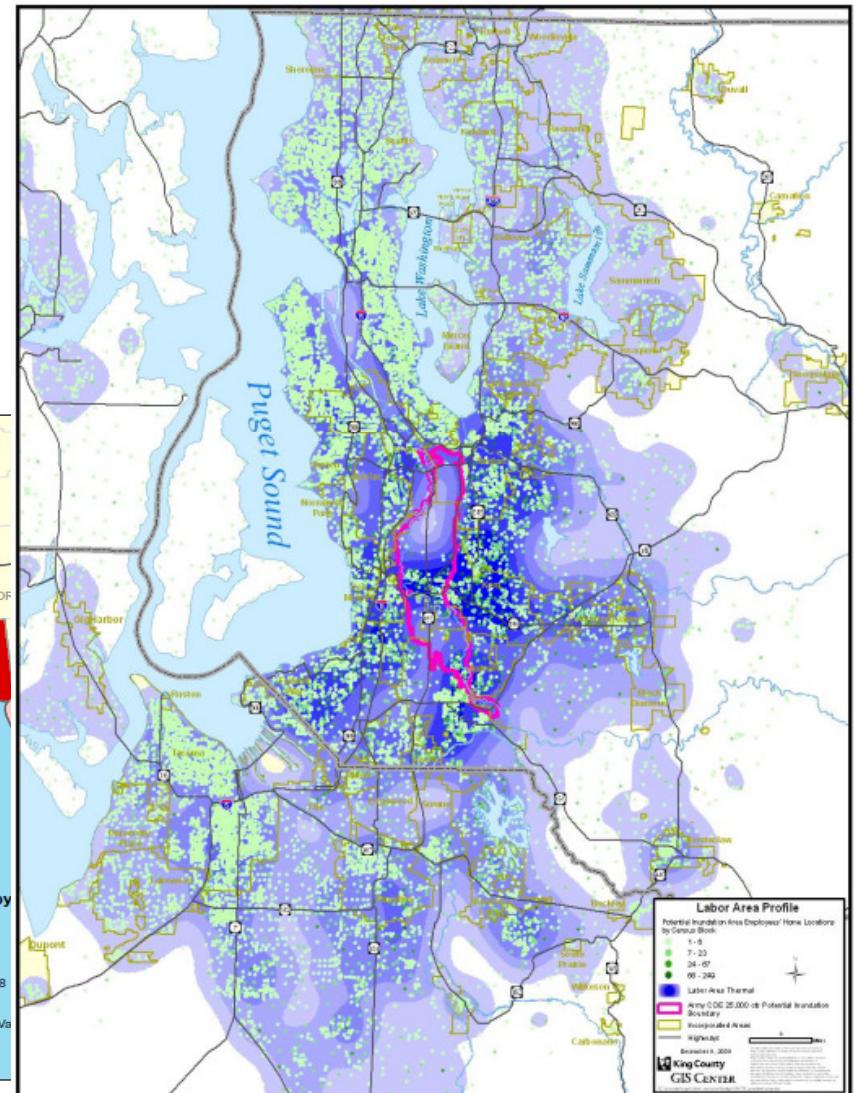
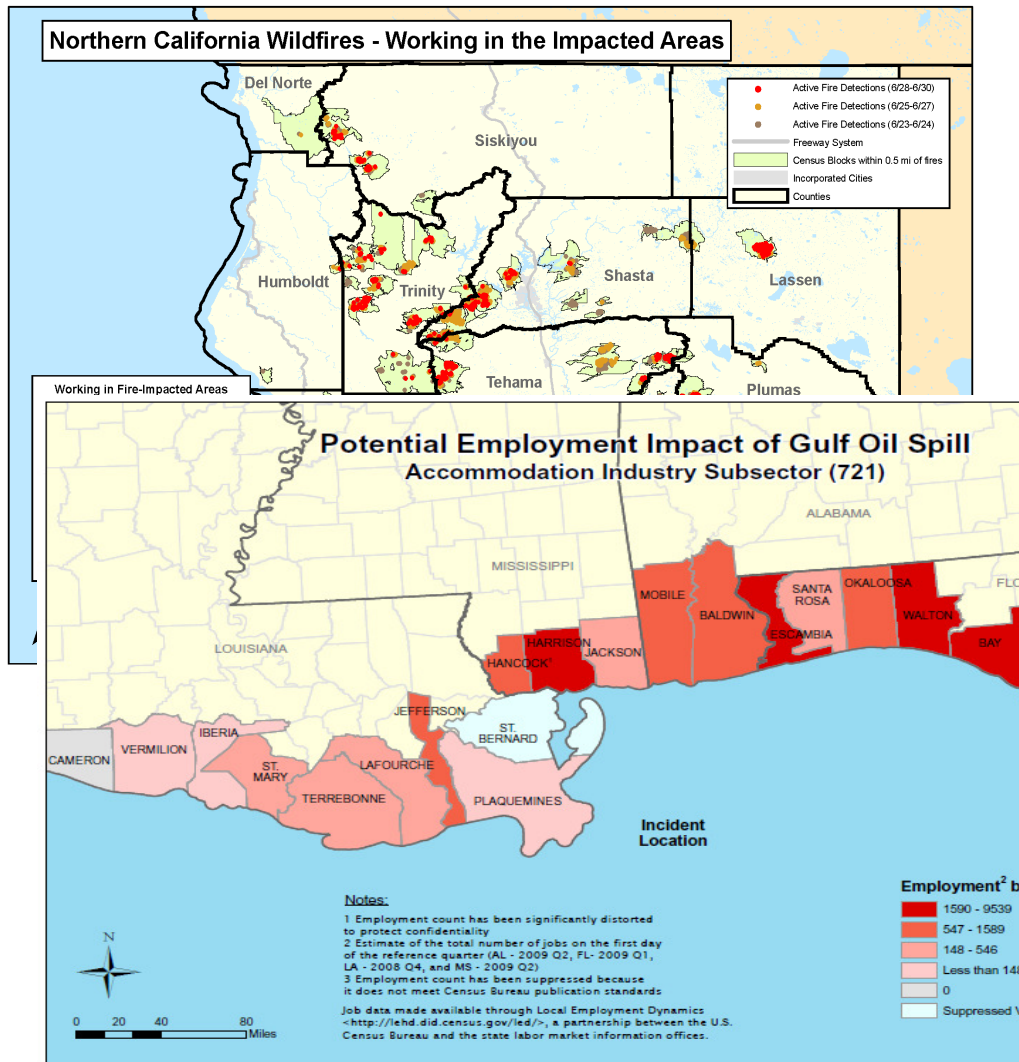
IT'S I





IT'S IN OUR HANDS

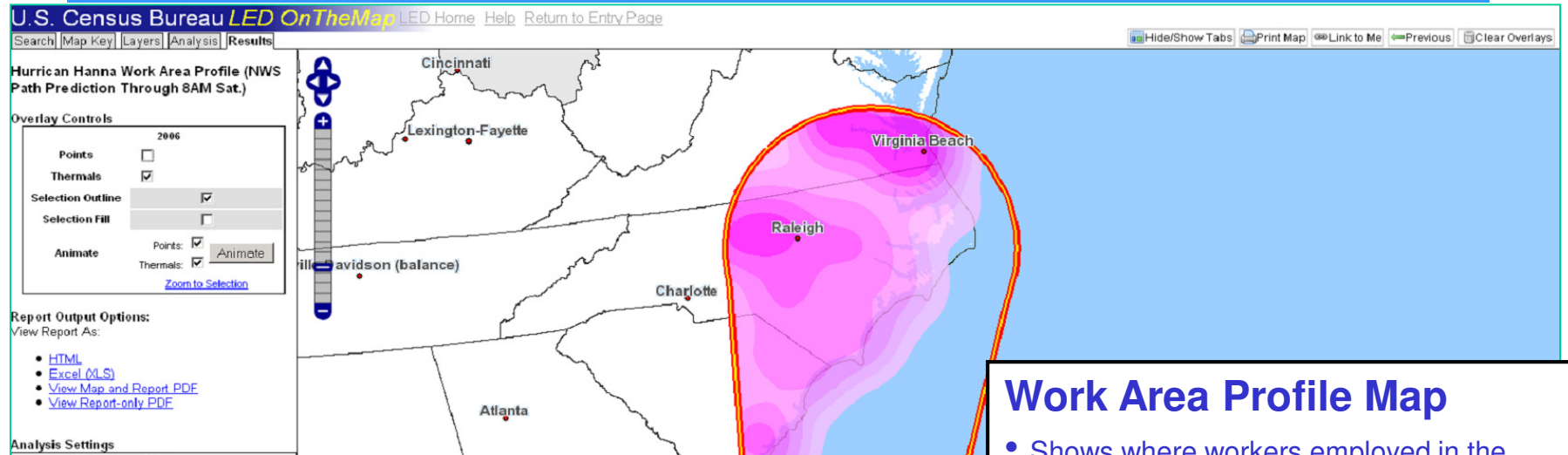
Uses of OnTheMap for Disasters





Mapping Hanna with Plume Tool

IT'S IN OUR HANDS



Work Area Profile Map

- Shows where workers employed in the selection area work.
- Projected path of Hanna based on NWS data.
- Plume selection from 20 miles to 150 miles.
- Approx. 3.9 million jobs in this 2006 selection.

Total Jobs			2006	
	Count	Share		
Total Jobs	3,851,764	100.0%		
Jobs by Worker Age			2006	
	Count	Share		
Age 30 or younger	986,540	25.6%		
Age 31 to 54	2,223,878	57.7%		
Age 55 or older	641,341	16.7%		
Jobs by Earnings Paid			2006	
	Count	Share		
\$1,200 per month or less	1,151,809	29.9%		
\$1,201 to \$3,400 per month	1,607,250	41.7%		
More than \$3,400 per month	1,092,703	28.4%		
Jobs by Industry Type (2-digit NAICS)			2006	
	Count	Share		
Agriculture, Forestry, Fishing and Hunting	27,209	0.7%		
Mining, Quarrying, and Oil and Gas Extraction	2,960	0.1%		
Utilities	20,313	0.5%		
Construction	250,366	6.5%		
Manufacturing	432,164	11.2%		
Wholesale Trade	156,254	4.1%		
Retail Trade	484,900	12.6%		



IT'S IN OUR HANDS

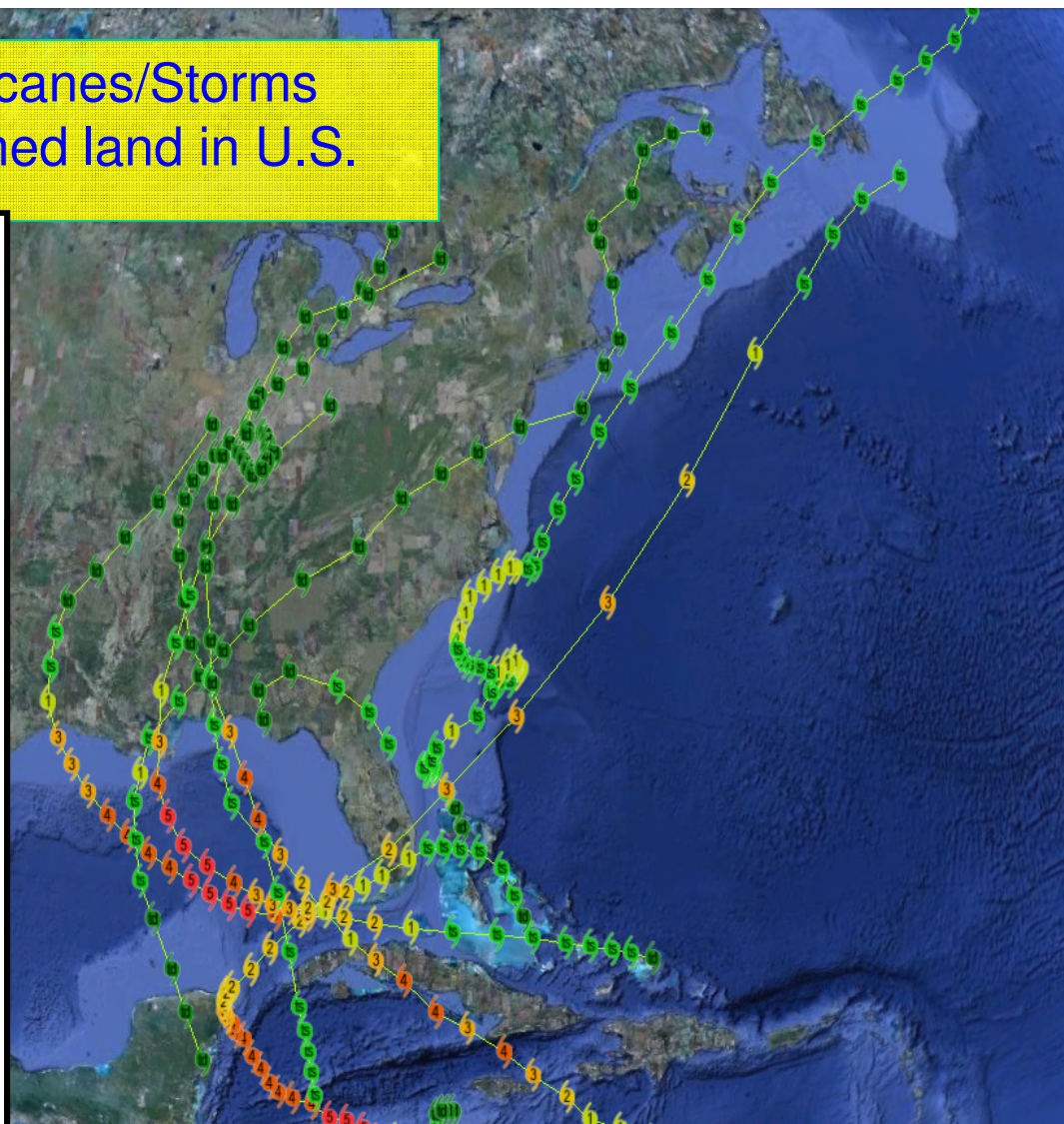
Atlantic Hurricanes in 2005

28 Hurricanes/Storms
8 reached land in U.S.

Hurricane Impact

Number of Hurricanes Making Landfall on U.S. Mainland: 1851 - 2009

AREA	HURRICANES	MAJOR
Texas	63	19
Louisiana	55	20
Mississippi	16	9
Alabama	26	6
Georgia	23	3
Florida	113	37
South Carolina	30	6
North Carolina	50	12
Virginia	10	1
Maryland	2	0
Delaware	2	0
New Jersey	2	0
Pennsylvania	1	0
New York	12	5
Connecticut	11	3
Rhode Island	9	4
Massachusetts	11	3
New Hampshire	2	0
Maine	6	0

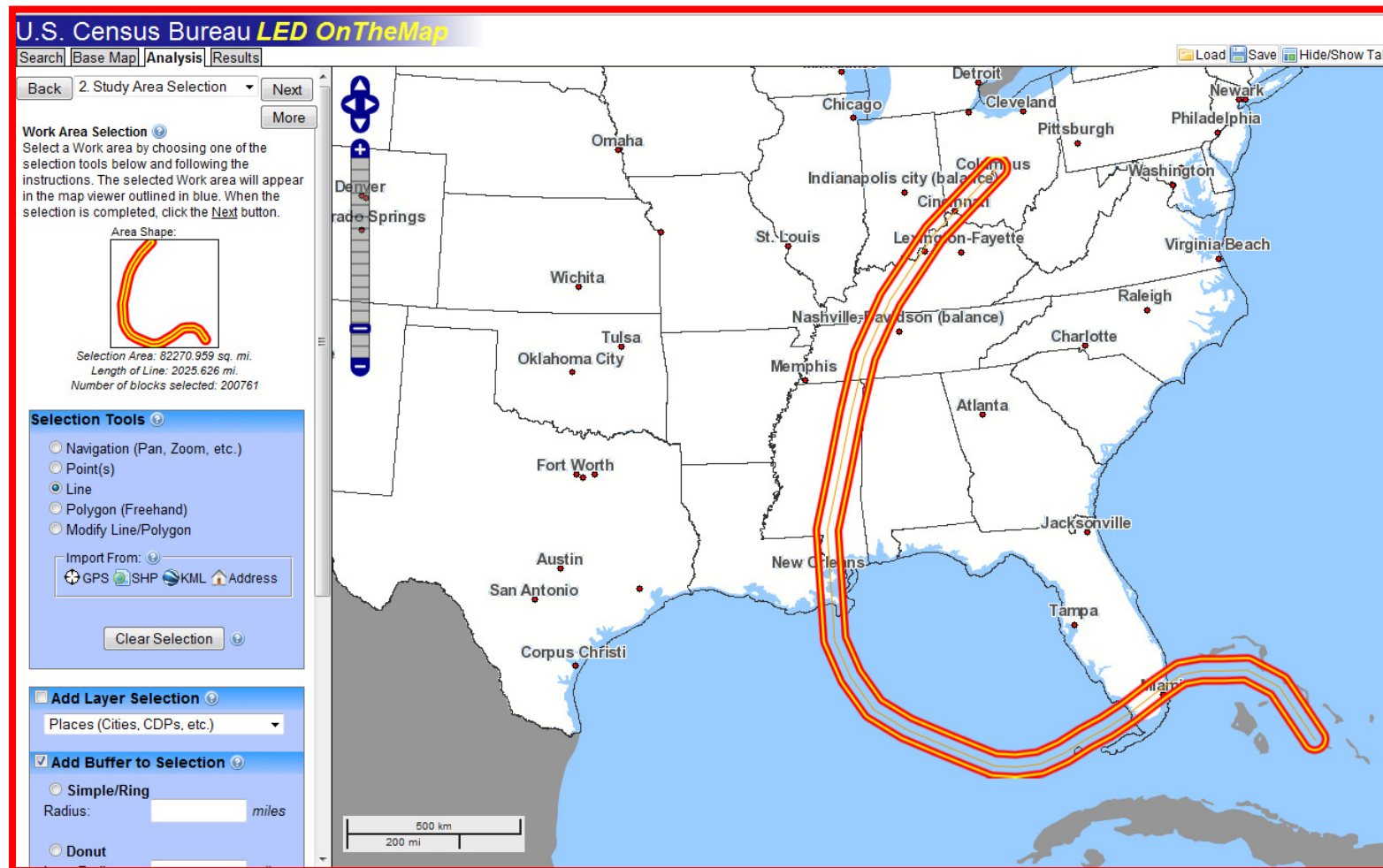


2010



Mapping Katrina from National Weather Service Data

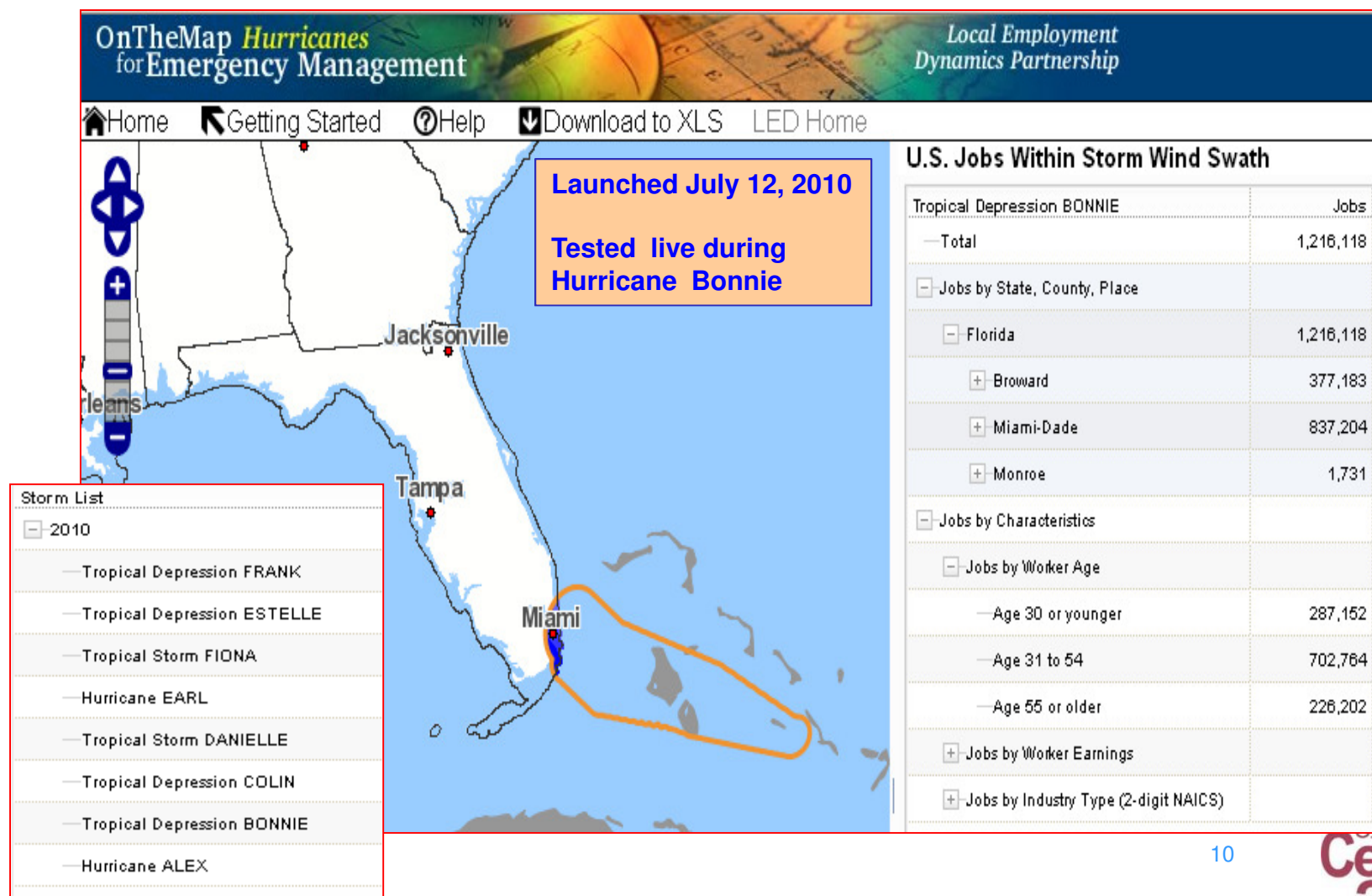
IT'S IN OUR HANDS





IT'S IN OUR HANDS


OnTheMap for Emergency Management: Hurricanes





IT'S IN OUR HANDS

Census & Emergency Preparedness

U.S. Census Bureau

People | Business | Geography | Newsroom | Subjects A to Z | Search@Census

Census Data & Emergency Preparedness

You are here: [Census.gov](#) > [Newsroom](#) > Census Data & Emergency Preparedness

Main | News Releases

ARCHIVED DATA

- [Earthquake in Haiti](#)
- [Southern California Wildfires](#)
- [Hurricane Wilma](#)
- [Hurricane Rita](#)
- [Hurricane Katrina](#)

RESOURCES:


- [Additional Information on Coastal Areas](#)
- [Migration Patterns and Mover Characteristics from the 2005 ACS Gulf Coast Area Special Products](#)

ON THE MAP FOR EMERGENCY MANAGEMENT: HURRICANES

This application is an easy-to-use tool that provides a live feed from the National Hurricane Center. When a storm's leading winds make landfall, the application will allow users to view the relationship between where people work and where they live, characteristics of the local workforce, such as the affected industries, the ages of workers and workers' earnings with a simple click of the link. It allows users to create, print and download workforce related maps, profiles and underlying data down to the block level.

2010 HURRICANE SEASON BEGINS

The north Atlantic hurricane season begins June 1 and lasts through November 30. The U.S. Census Bureau produces timely local data that are critical to emergency planning, preparedness and recovery efforts. This edition of Facts for Features highlights the number of people living in areas that could be most affected by these dramatic acts of nature.



Atlantic Tropical Cyclone Activity

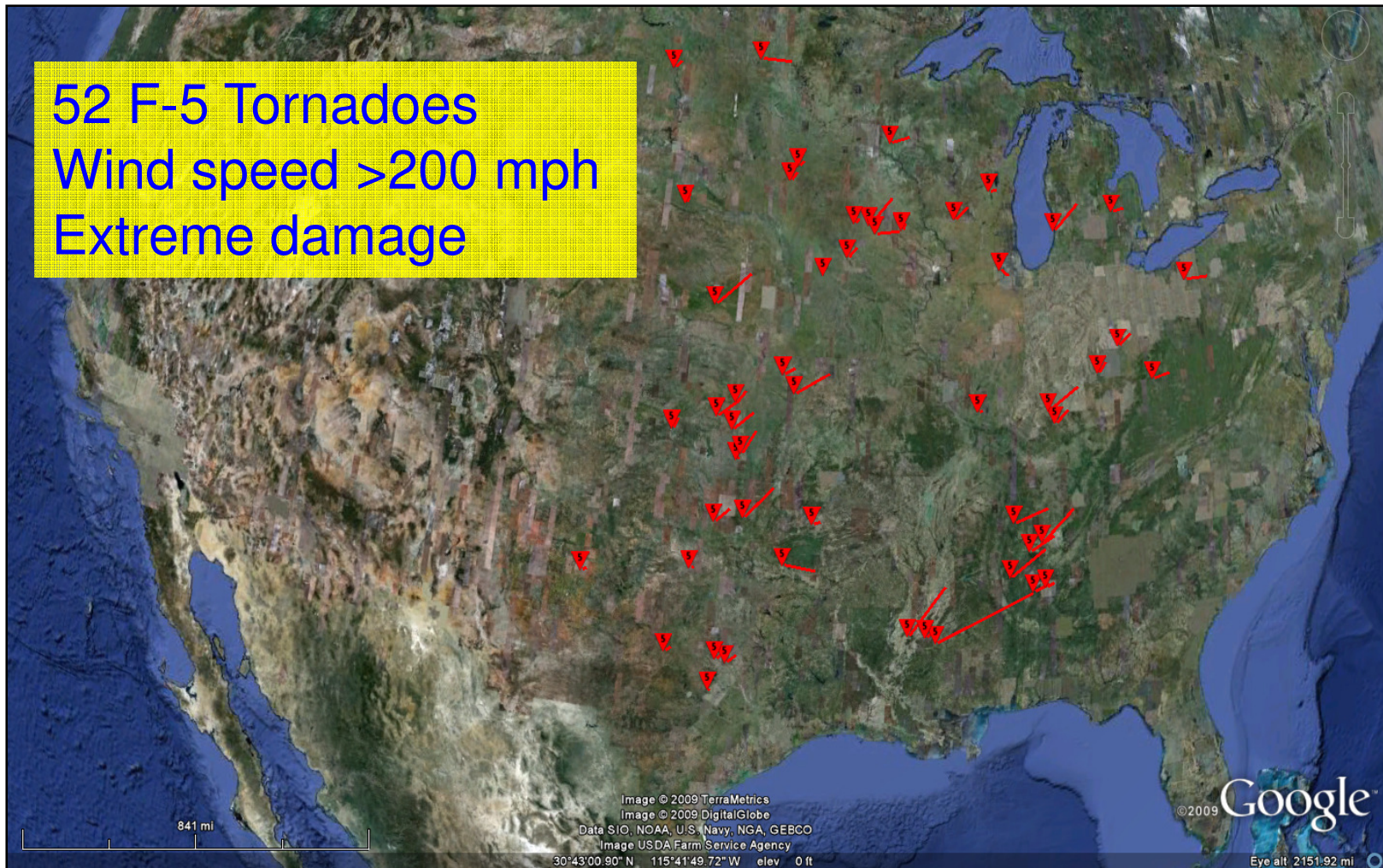
Census
2010



IT'S IN OUR HANDS

Reported F-5 Tornadoes in 2008

52 F-5 Tornadoes
Wind speed >200 mph
Extreme damage





IT'S IN OUR HANDS

Contact Us

Comments/Suggestions

colleen.d.flannery@census.gov
ces.local.employment.dynamics@census.gov

Local Employment Dynamics Website

<http://lehd.did.census.gov>

Join the Listservs

Lehd-general@lists.census.gov
Lehd-onthemap@lists.census.gov