

Employment and Unemployment Statistics

Thomas Nardone
Assistant Commissioner

Current Employment Analysis
APDU Annual Conference
September 25, 2009



www.bls.gov

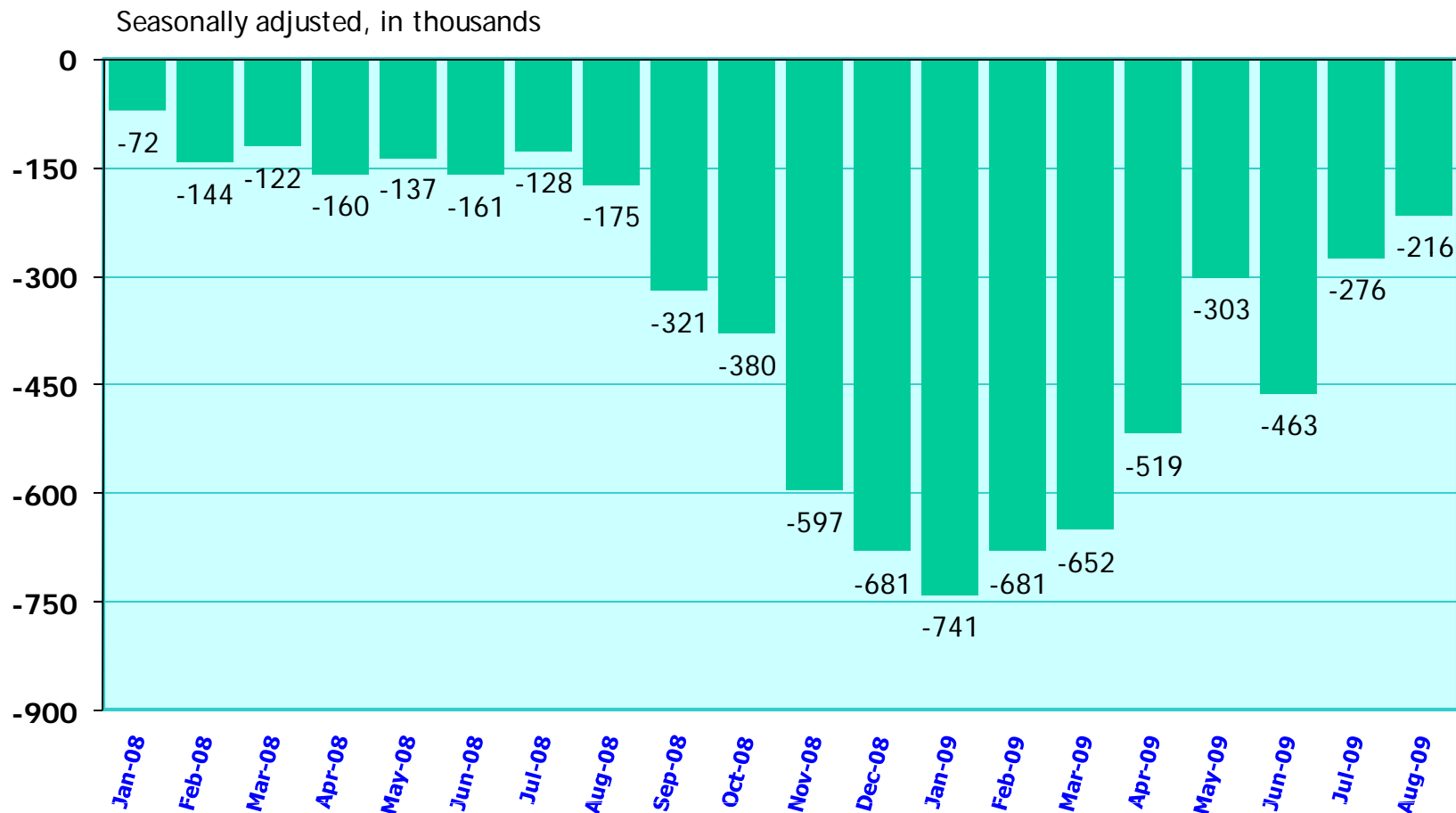
Outline

- BLS Employment and Unemployment Programs
- Current labor market situation
 - ▶ National statistics
 - ▶ State and area statistics

BLS Employment and Unemployment Programs

- Current Employment Statistics
- Current Population Survey
- Local Area Unemployment Statistics
- Quarterly Census of Employment and Wages
- Business Employment Dynamics
- Occupational Employment Statistics
- Job Openings and Labor Turnover Survey
- Mass Layoff Survey
- American Time Use Survey
- National Longitudinal Survey
- Employment Projections

Employment in total nonfarm Over-the-month change, 2008-09

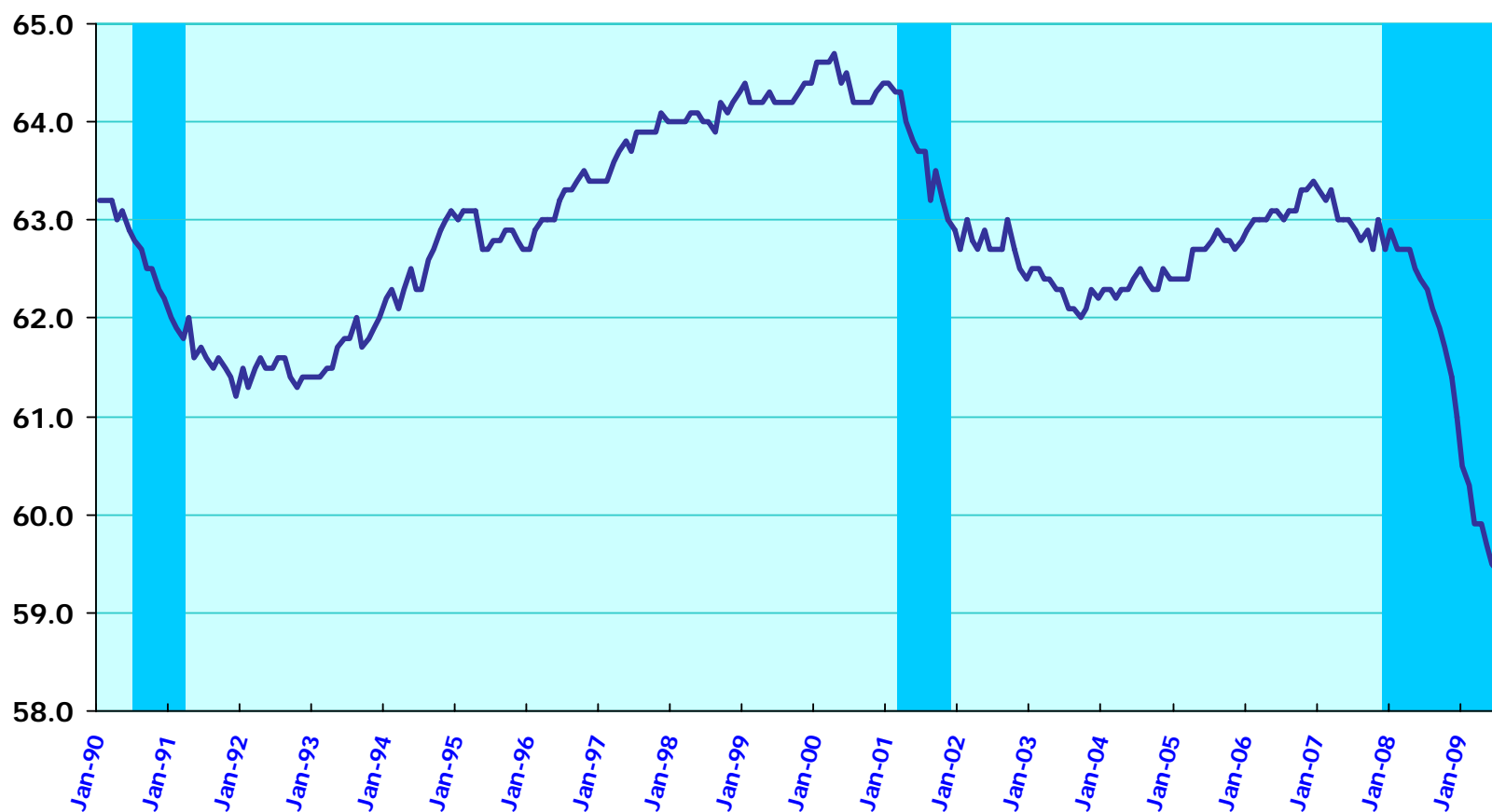


Source: Bureau of Labor Statistics, Current Employment Statistics survey, September 4, 2009.

Note: Most recent 2 months of data are preliminary.

Employment-population ratio, seasonally adjusted, 1990-2009

Percent

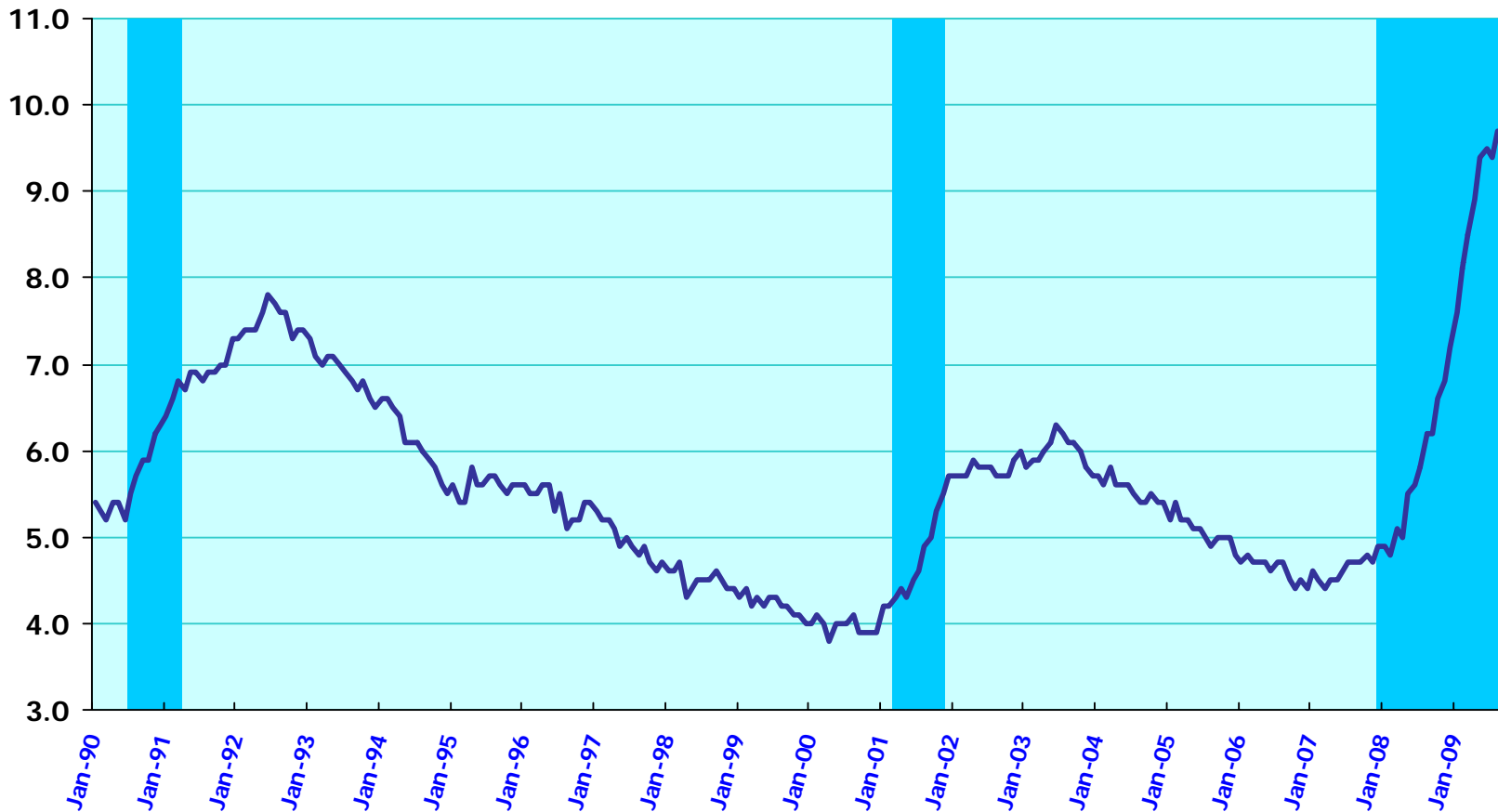


NOTE: Shaded areas represent recessions as determined by the National Bureau of Economic Research (NBER). NBER has not yet determined an endpoint for the recession that began in December 2007.

SOURCE: Bureau of Labor Statistics, Current Population Survey, September 4, 2009.

Civilian unemployment rate, seasonally adjusted, 1990-2009

Percent

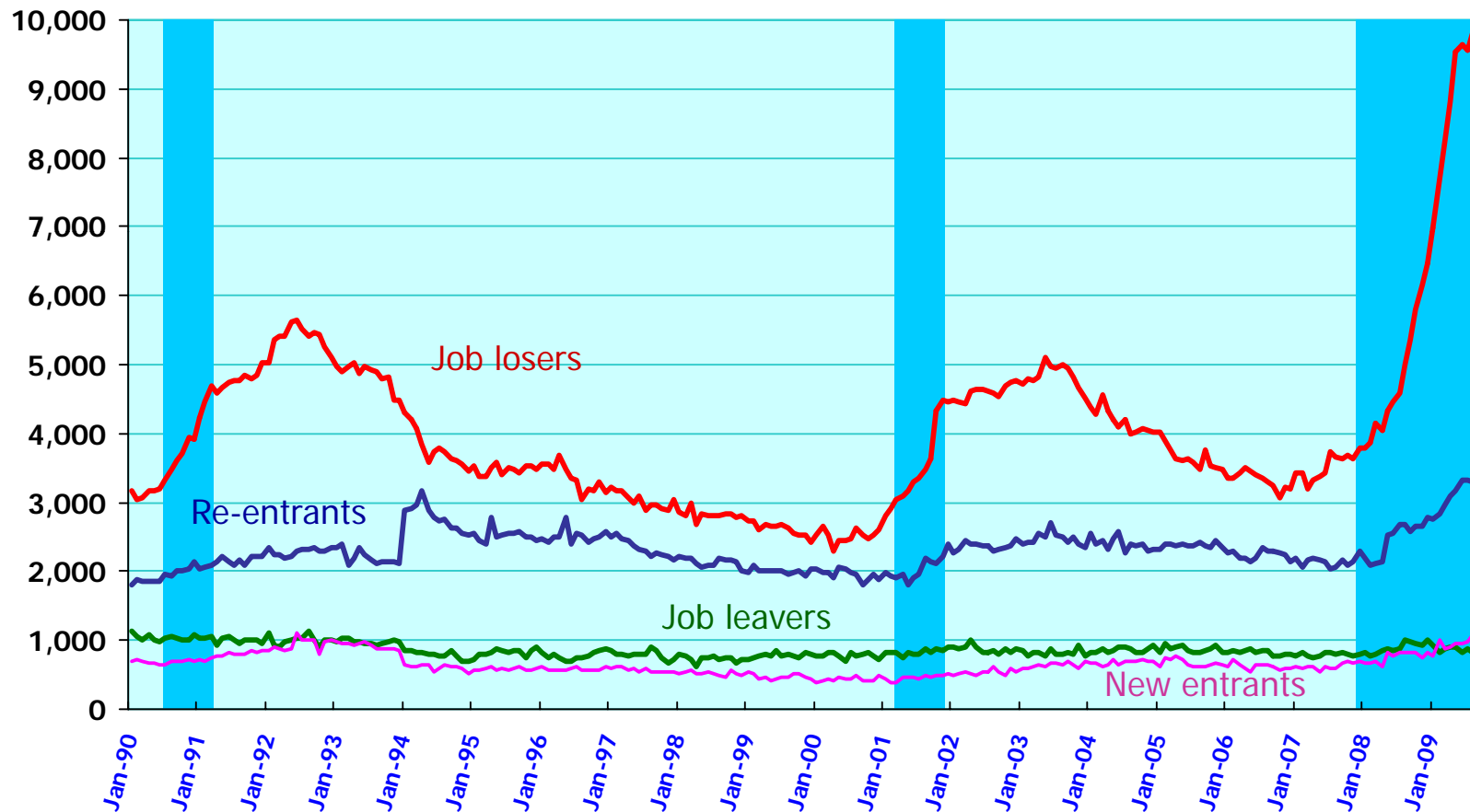


NOTE: Shaded areas represent recessions as determined by the National Bureau of Economic Research (NBER). NBER has not yet determined an endpoint for the recession that began in December 2007.

SOURCE: Bureau of Labor Statistics, Current Population Survey, September 4, 2009.

Reasons for unemployment, seasonally adjusted, 1990-2009

Numbers in thousands



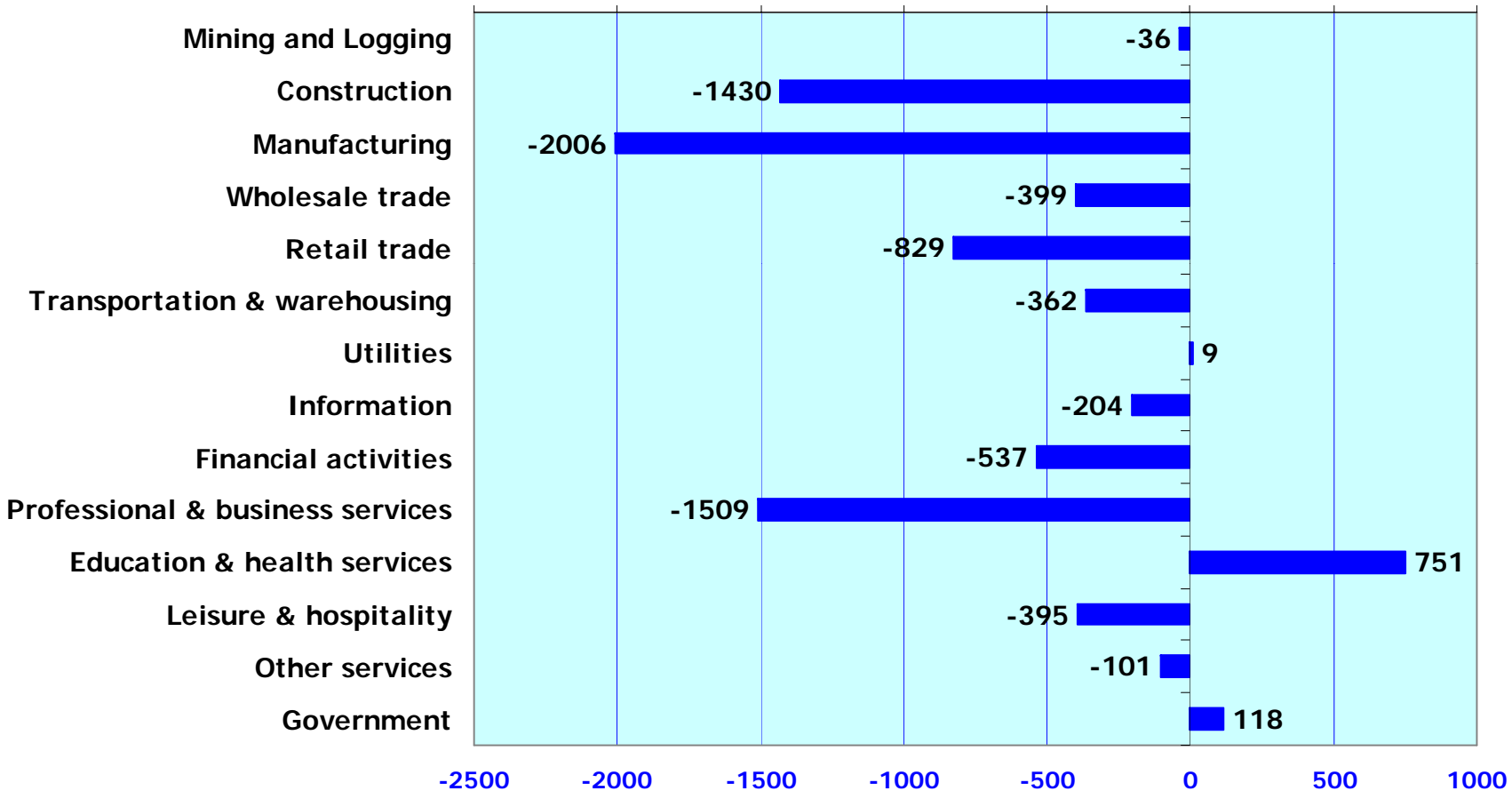
NOTE: Shaded areas represent recessions as determined by the National Bureau of Economic Research (NBER). NBER has not yet determined an endpoint for the recession that began in December 2007.

SOURCE: Bureau of Labor Statistics, Current Population Survey, September 4, 2009.

Employment change from start of recession

Dec '07 - Aug '09

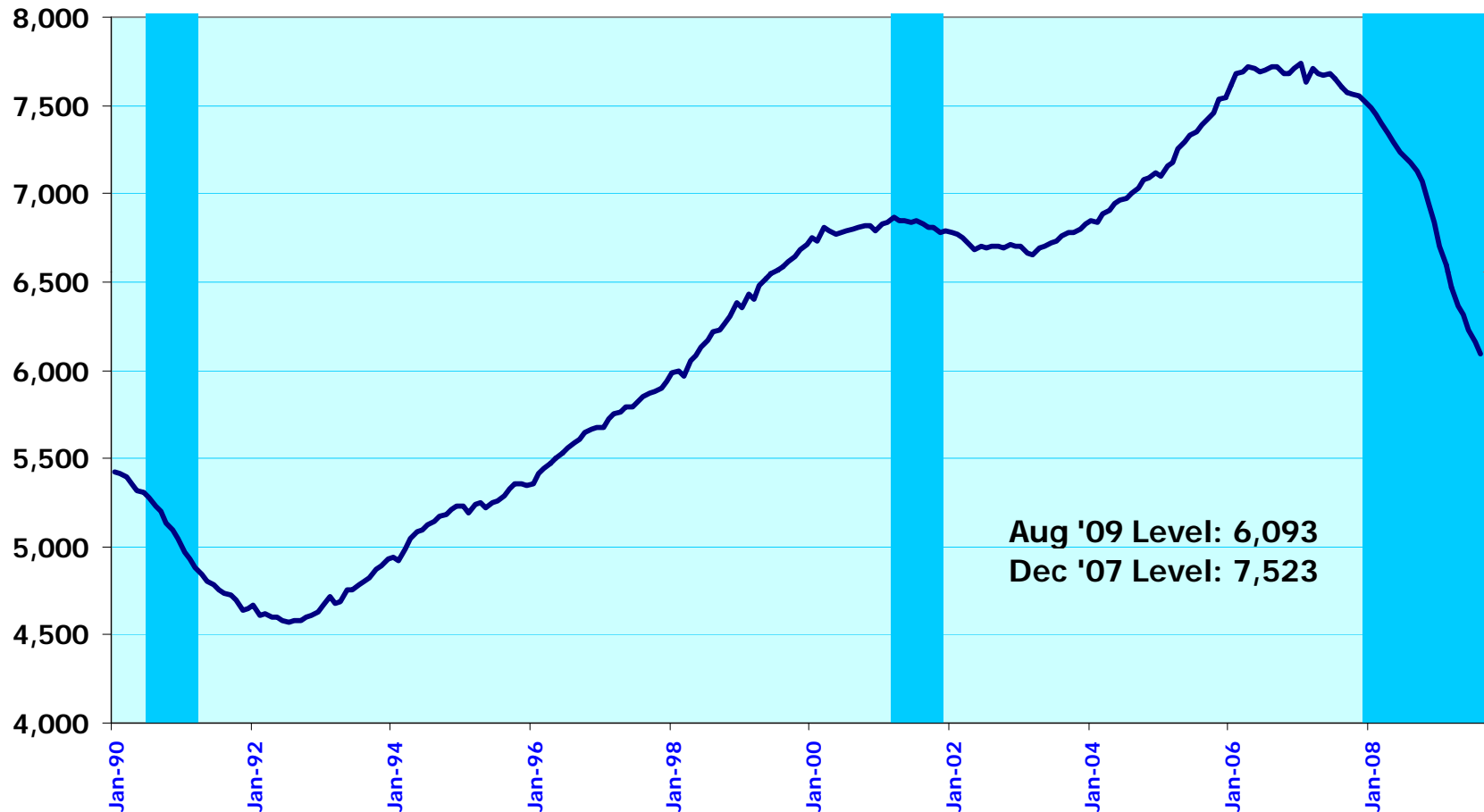
seasonally adjusted, in thousands



Source: Bureau of Labor Statistics, Current Employment Statistics survey, September 4, 2009

Employment in construction 1990 - 2009

seasonally adjusted, in thousands

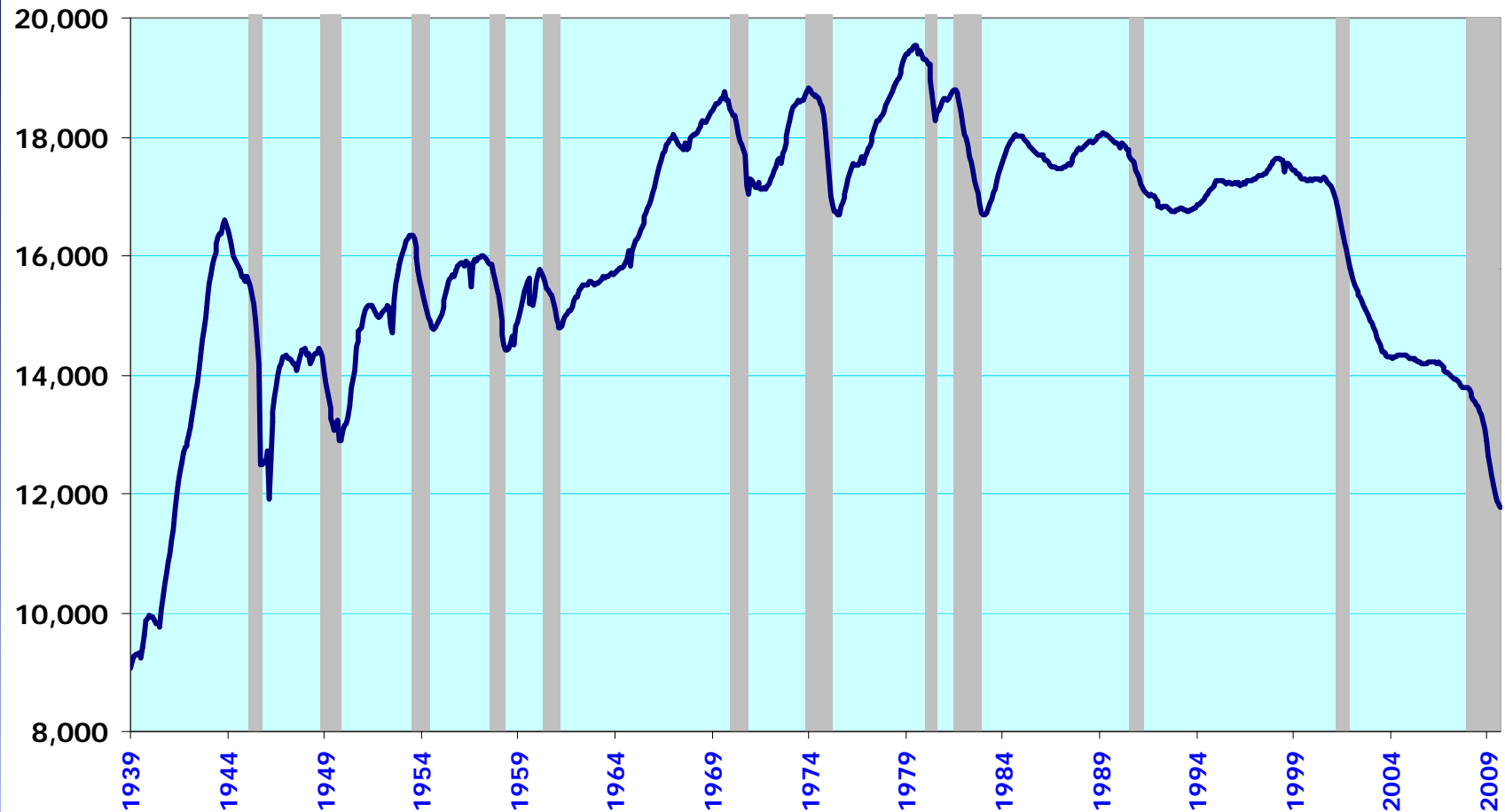


Source: Bureau of Labor Statistics, Current Employment Statistics survey, September 4, 2009

NOTE: Shaded areas represent recessions as determined by the National Bureau of Economic Research (NBER). NBER has not yet determined an endpoint for the recession that began in December 2007.

Employment in manufacturing 1939 - 2009

seasonally adjusted, in thousands

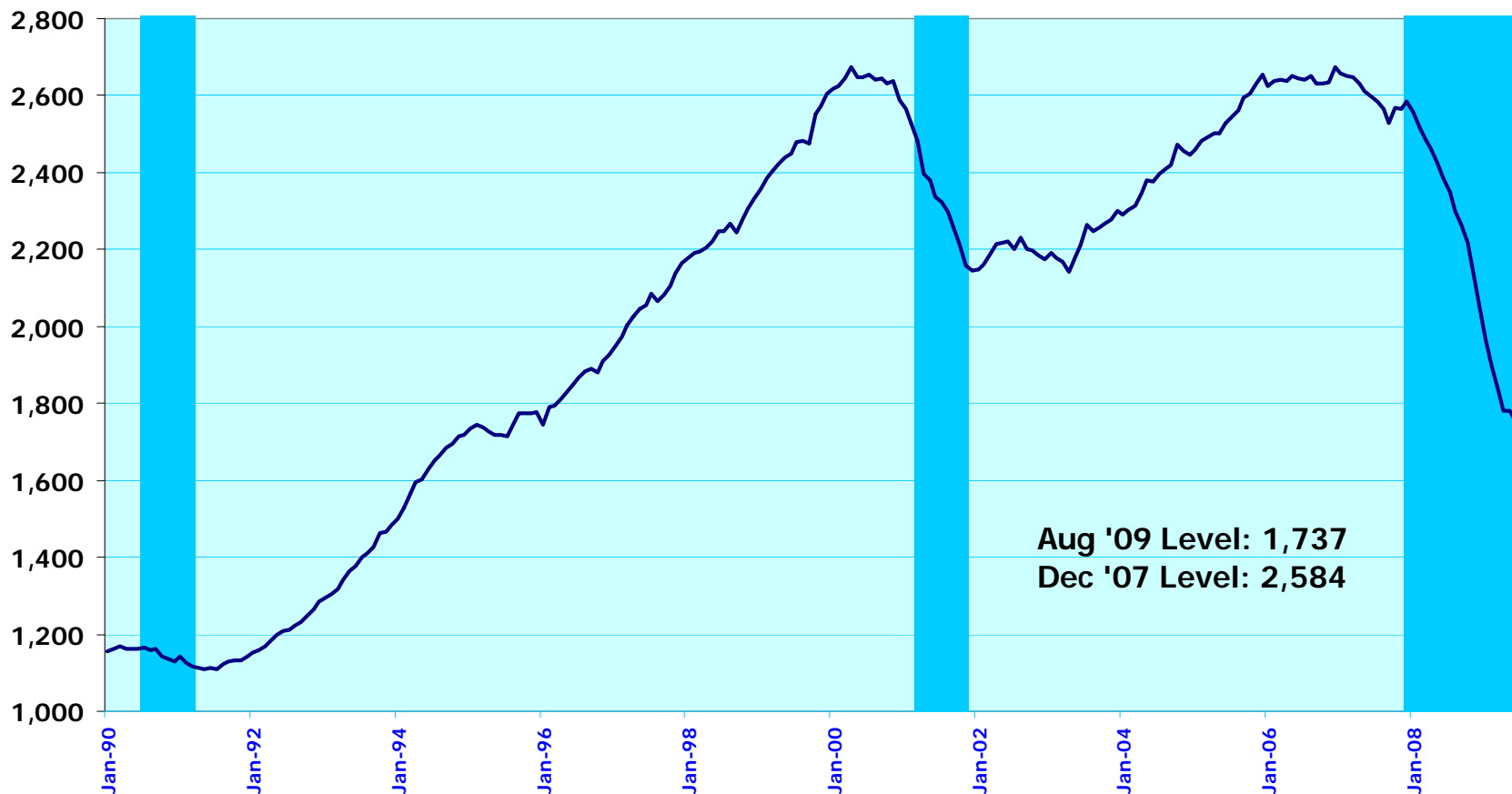


Source: Bureau of Labor Statistics, Current Employment Statistics survey, September 4, 2009

NOTE: Shaded areas represent recessions as determined by the National Bureau of Economic Research (NBER). NBER has not yet determined an endpoint for the recession that began in December 2007.

Employment in temporary help services 1990 - 2009

seasonally adjusted, in thousands

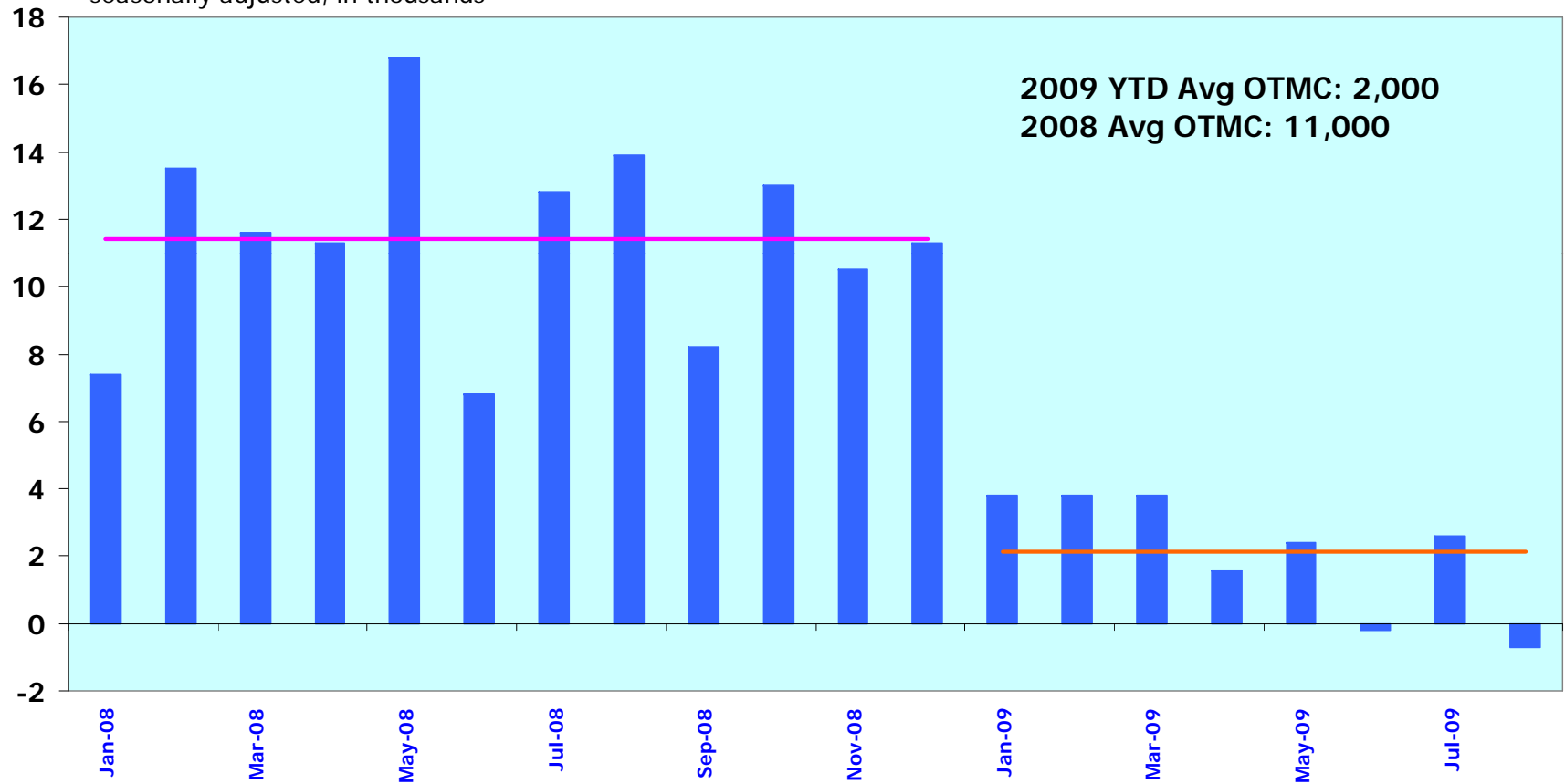


Source: Bureau of Labor Statistics, Current Employment Statistics survey, September 4, 2009

NOTE: Shaded areas represent recessions as determined by the National Bureau of Economic Research (NBER). NBER has not yet determined an endpoint for the recession that began in December 2007.

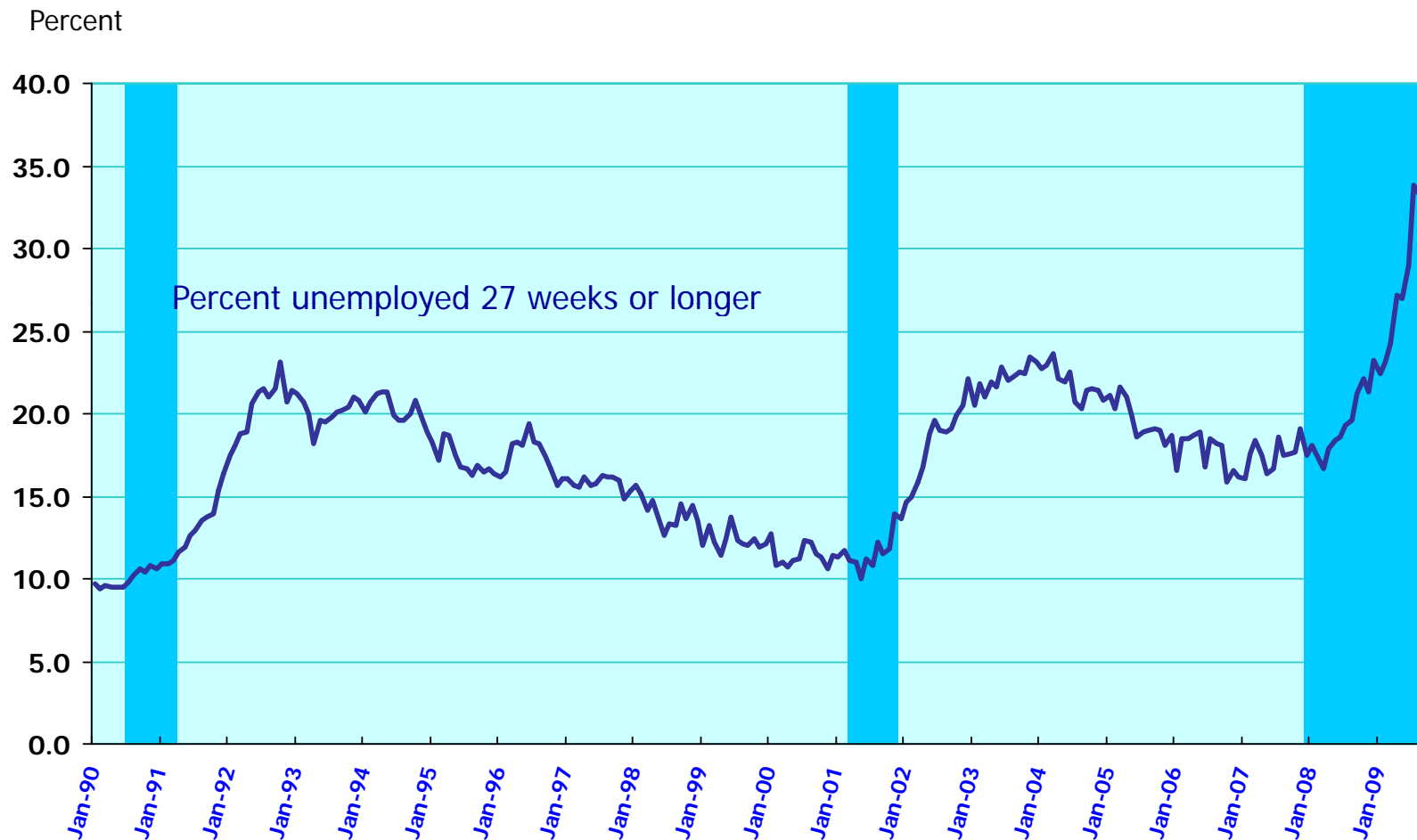
Employment in Hospitals Over-the-month change, 2008 - 2009

seasonally adjusted, in thousands



Source: Bureau of Labor Statistics, Current Employment Statistics survey, September 4, 2009

Long-term unemployed as a percent of total unemployed, seasonally adjusted, 1990-2009



NOTE: Shaded areas represent recessions as determined by the National Bureau of Economic Research (NBER). NBER has not yet determined an endpoint for the recession that began in December 2007.

SOURCE: Bureau of Labor Statistics, Current Population Survey, September 4, 2009.

Employment by usual full- and part-time status, seasonally adjusted, 2000-2009

Full time, numbers in thousands

Part time, numbers in thousands

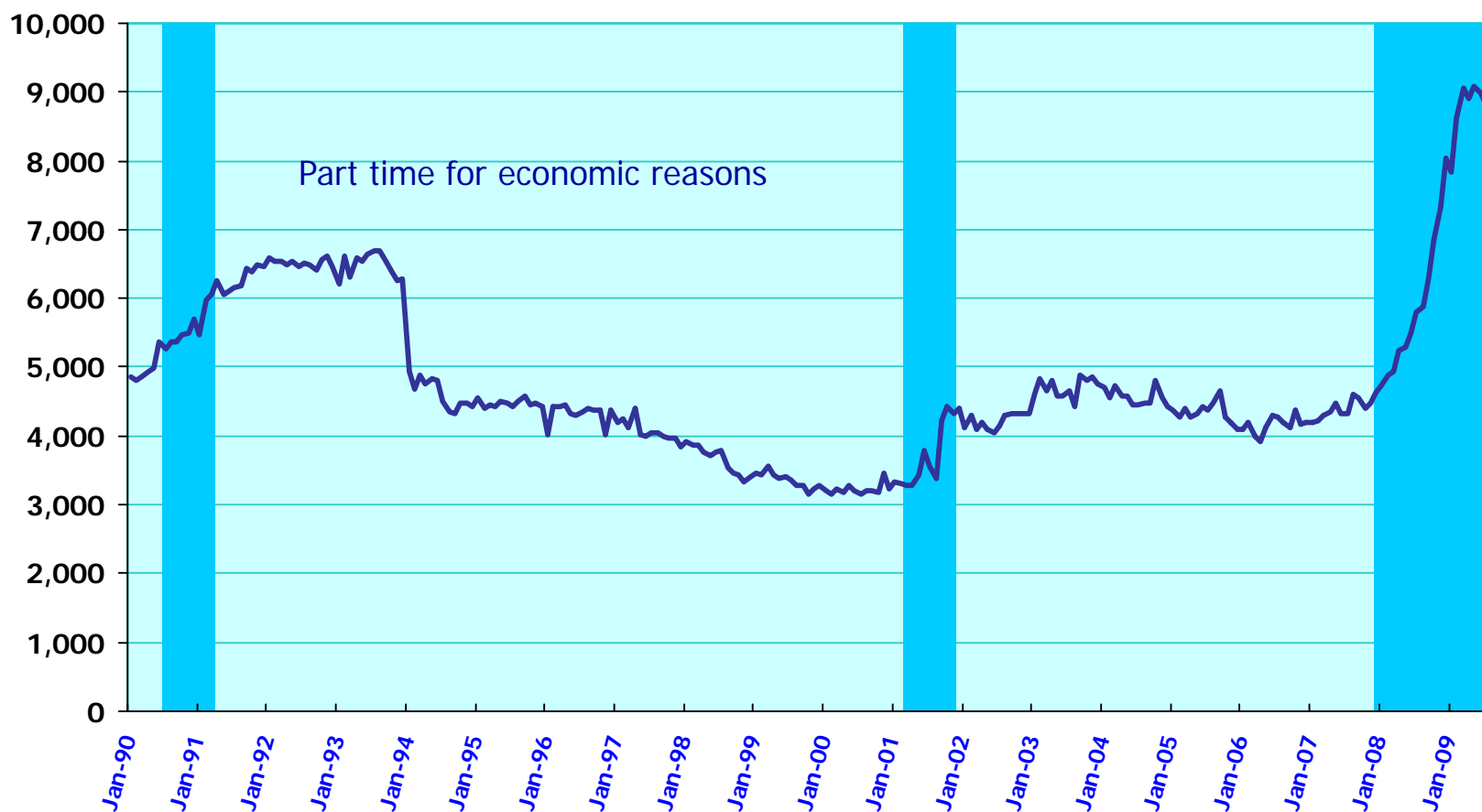


NOTE: Shaded areas represent recessions as determined by the National Bureau of Economic Research (NBER). NBER has not yet determined an endpoint for the recession that began in December 2007.

SOURCE: Bureau of Labor Statistics, Current Population Survey, September 4, 2009.

Involuntary part time employment, seasonally adjusted, 1990-2009

Numbers in thousands



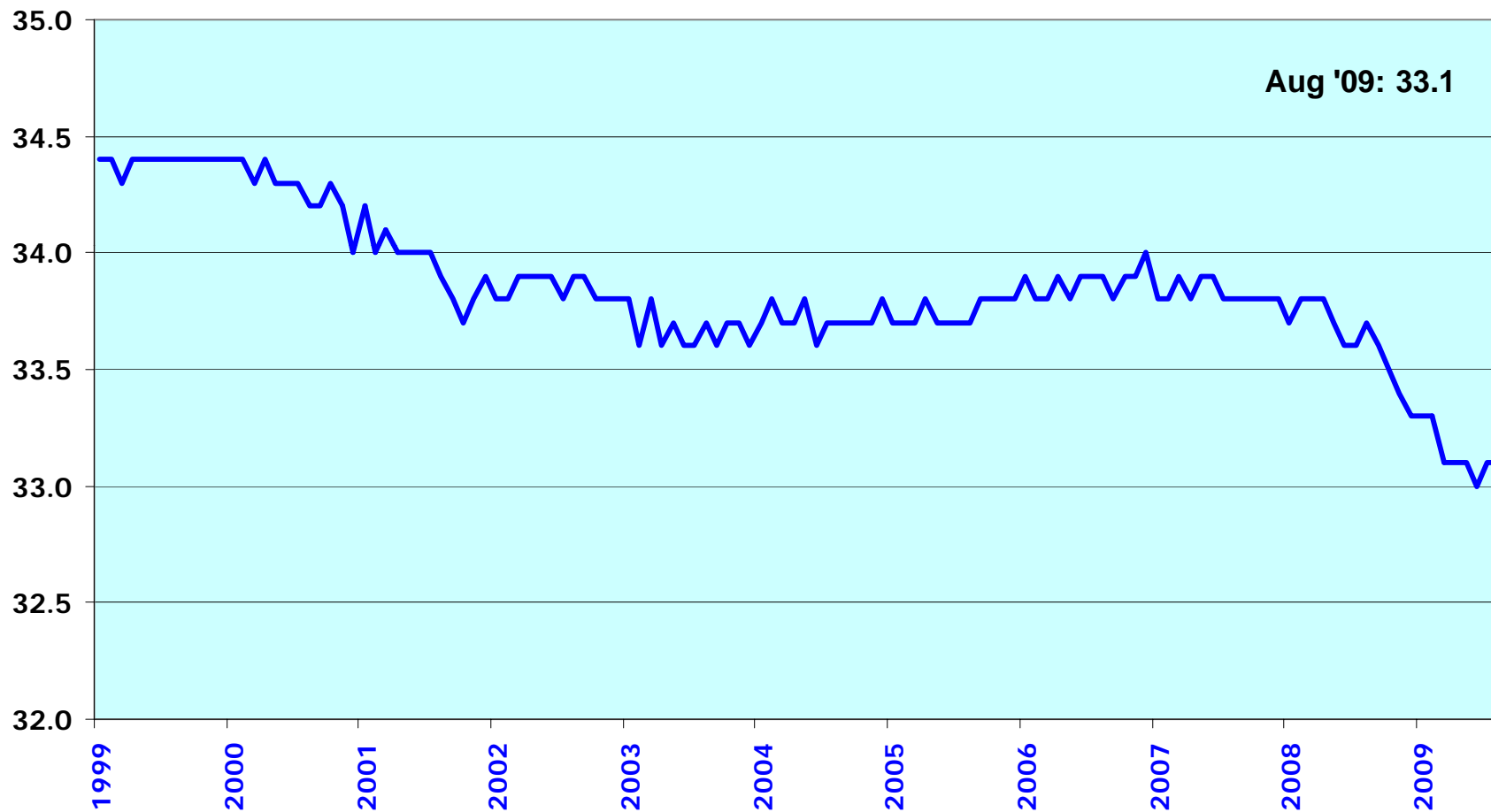
NOTE: Shaded areas represent recessions as determined by the National Bureau of Economic Research (NBER). NBER has not yet determined an endpoint for the recession that began in December 2007.

SOURCE: Bureau of Labor Statistics, Current Population Survey, September 4, 2009.

Average weekly hours, total private

1999 - 2009

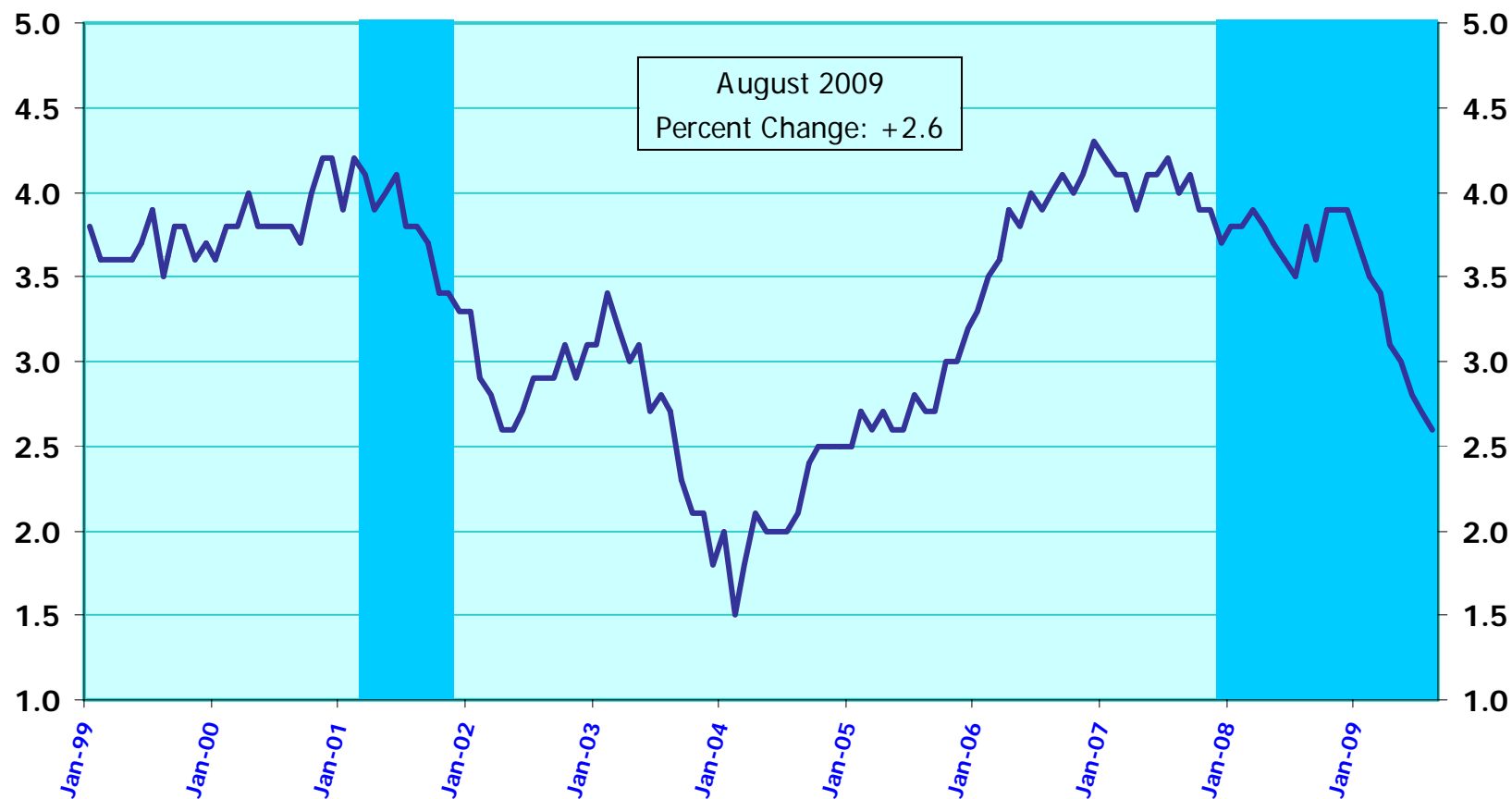
seasonally adjusted



Source: Bureau of Labor Statistics, Current Employment Statistics survey, September 4, 2009

Over-the-year percent change in average hourly earnings 1999 - 2009

Seasonally adjusted, percent

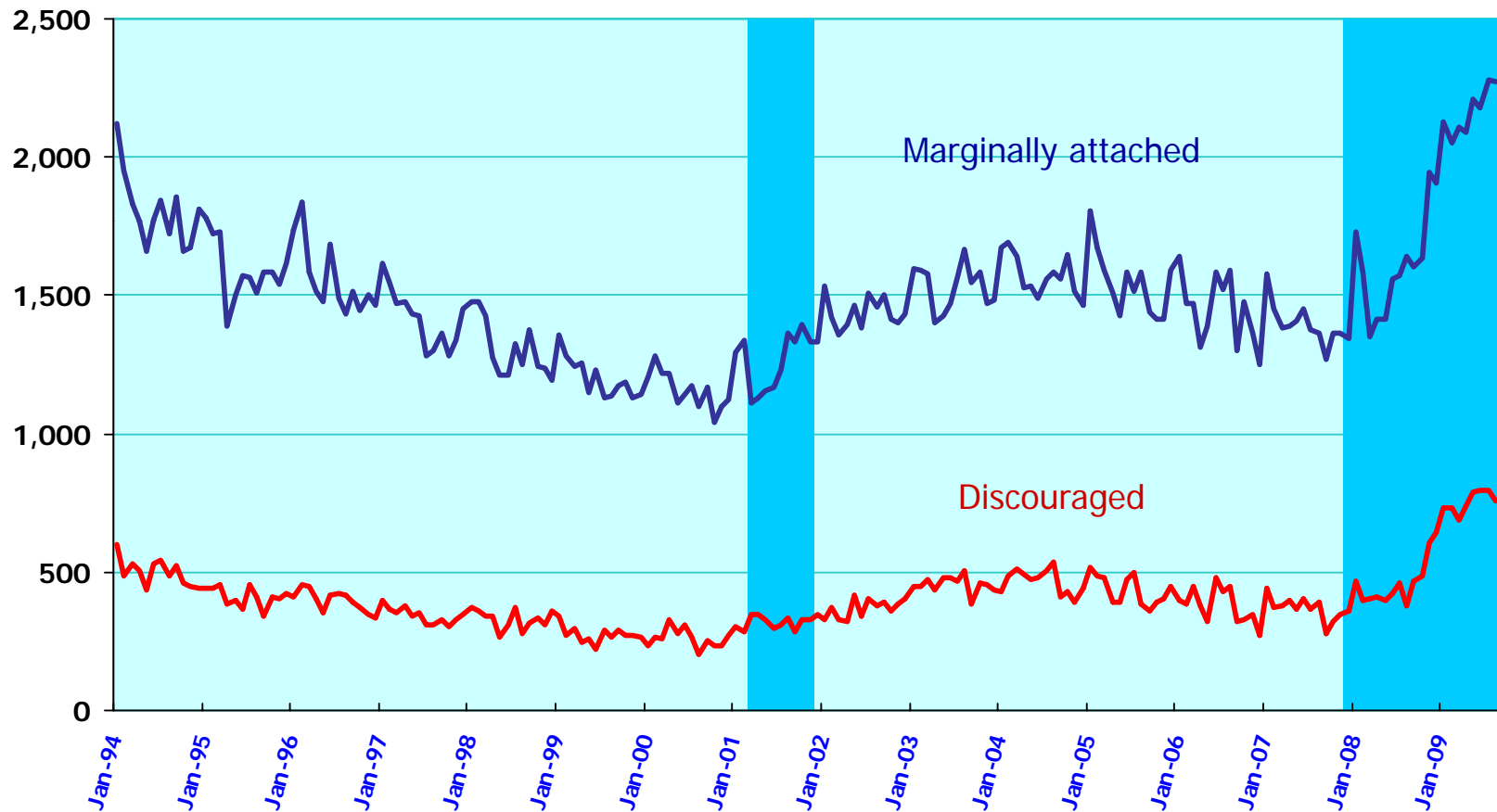


Source: Bureau of Labor Statistics, Current Employment Statistics survey, September 4, 2009

NOTE: Shaded areas represent recessions as determined by the National Bureau of Economic Research (NBER). NBER has not yet determined an endpoint for the recession that began in December 2007.

Persons not in the labor force, selected indicators, not seasonally adjusted, 1994-2009

Numbers in thousands

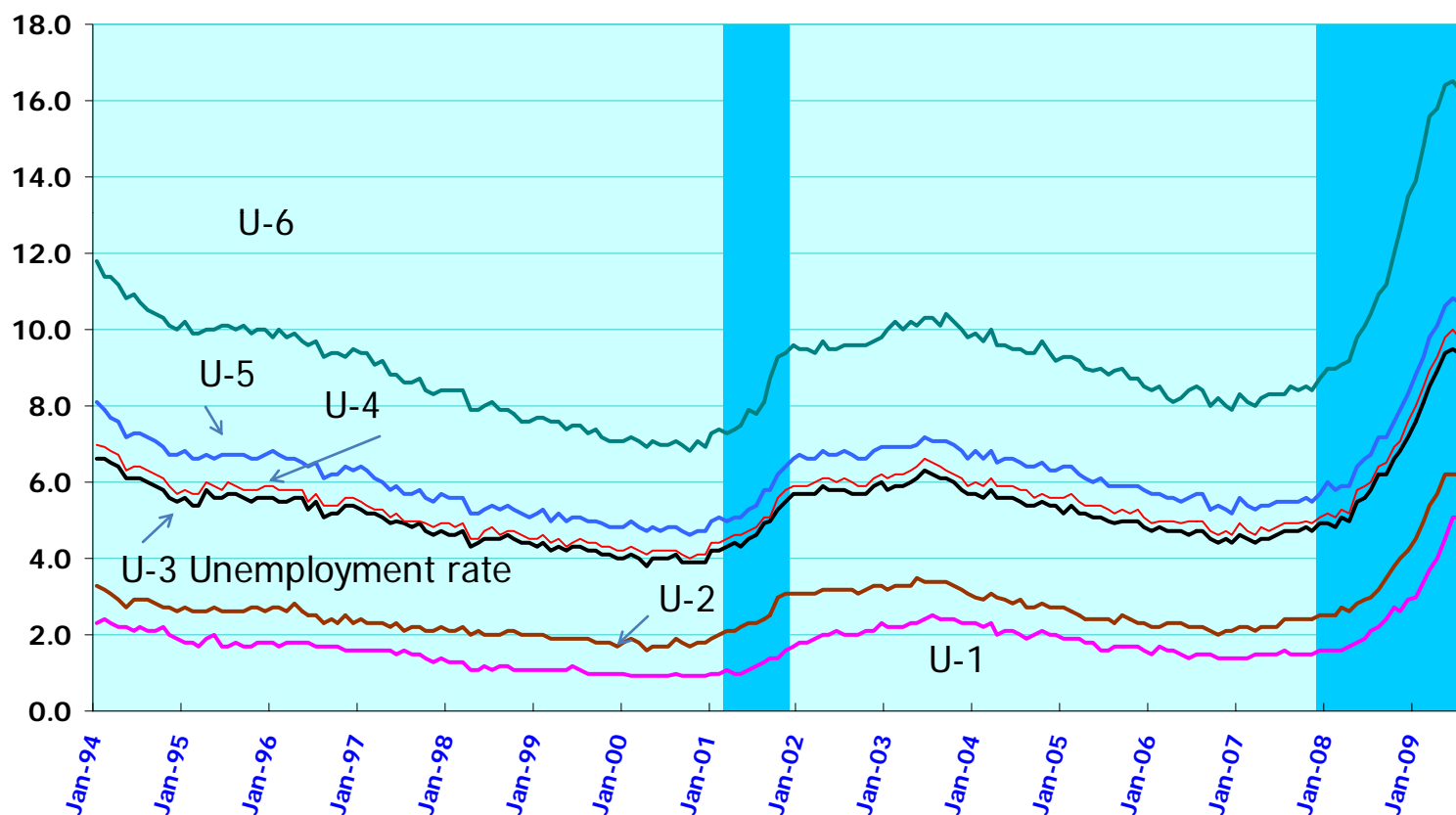


NOTE: Shaded areas represent recessions as determined by the National Bureau of Economic Research (NBER). NBER has not yet determined an endpoint for the recession that began in December 2007.

SOURCE: Bureau of Labor Statistics, Current Population Survey, September 4, 2009.

Alternative Measures of Labor Underutilization: U1-U6

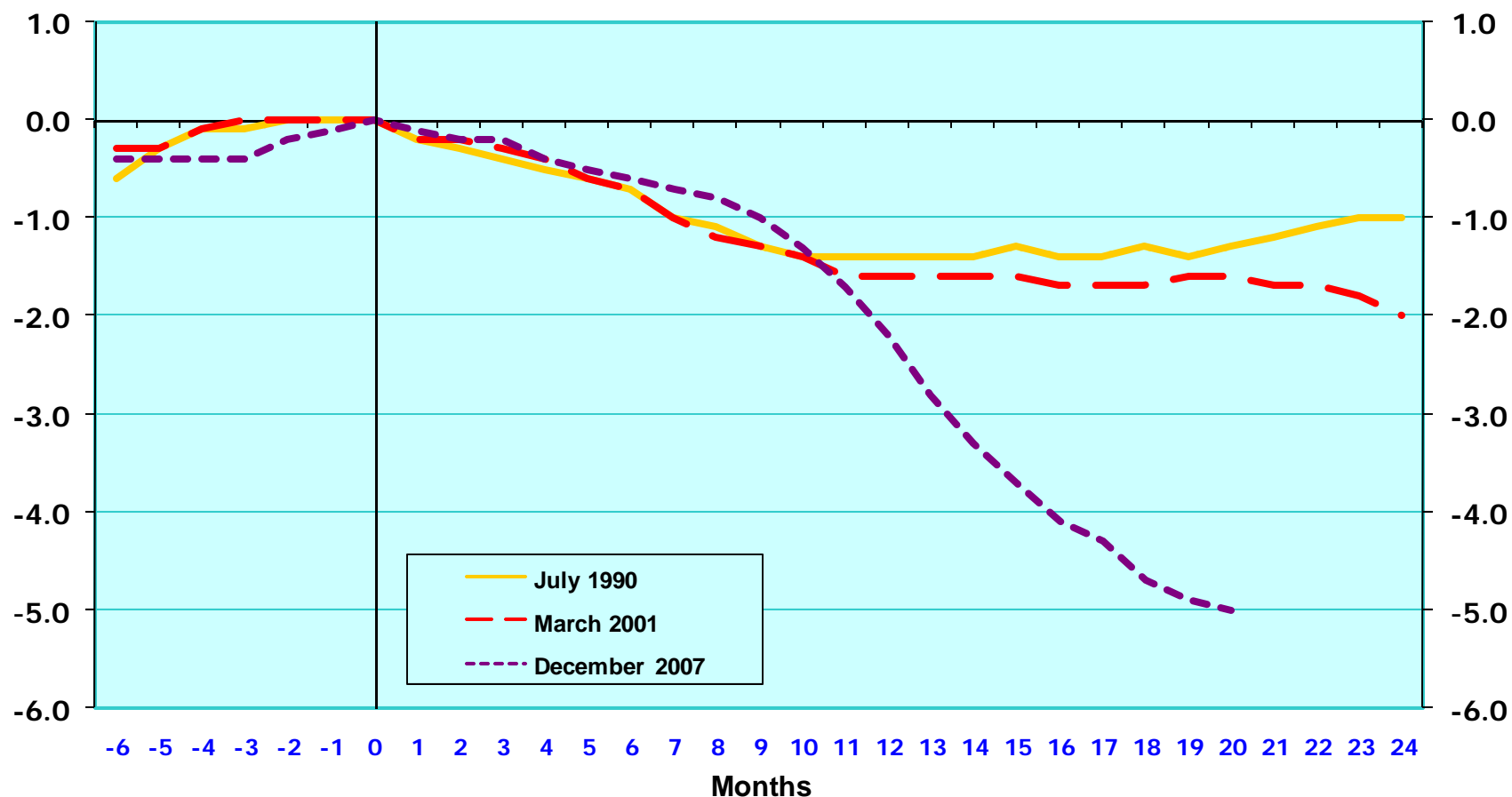
Percent



Source: Bureau of Labor Statistics, Current Population Survey

Note: Data are monthly, shaded area denotes recession.

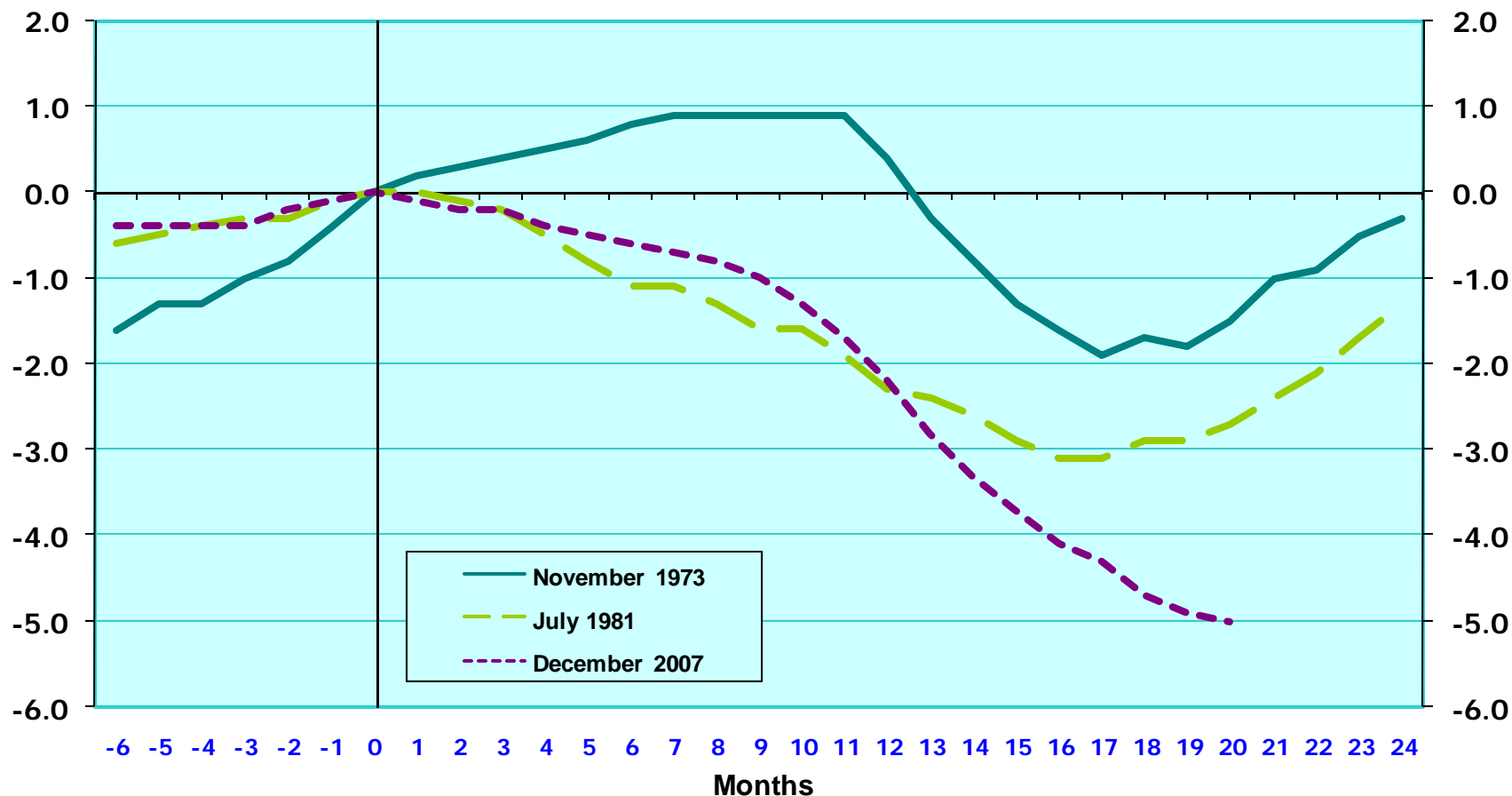
Percentage change in total nonfarm employment, from beginning of recession*, seasonally adjusted



Source: Bureau of Labor Statistics, Current Employment Statistics survey, September 4, 2009.

*Note: Business cycle peak as determined by the National Bureau of Economic Research. Most recent two months are preliminary.

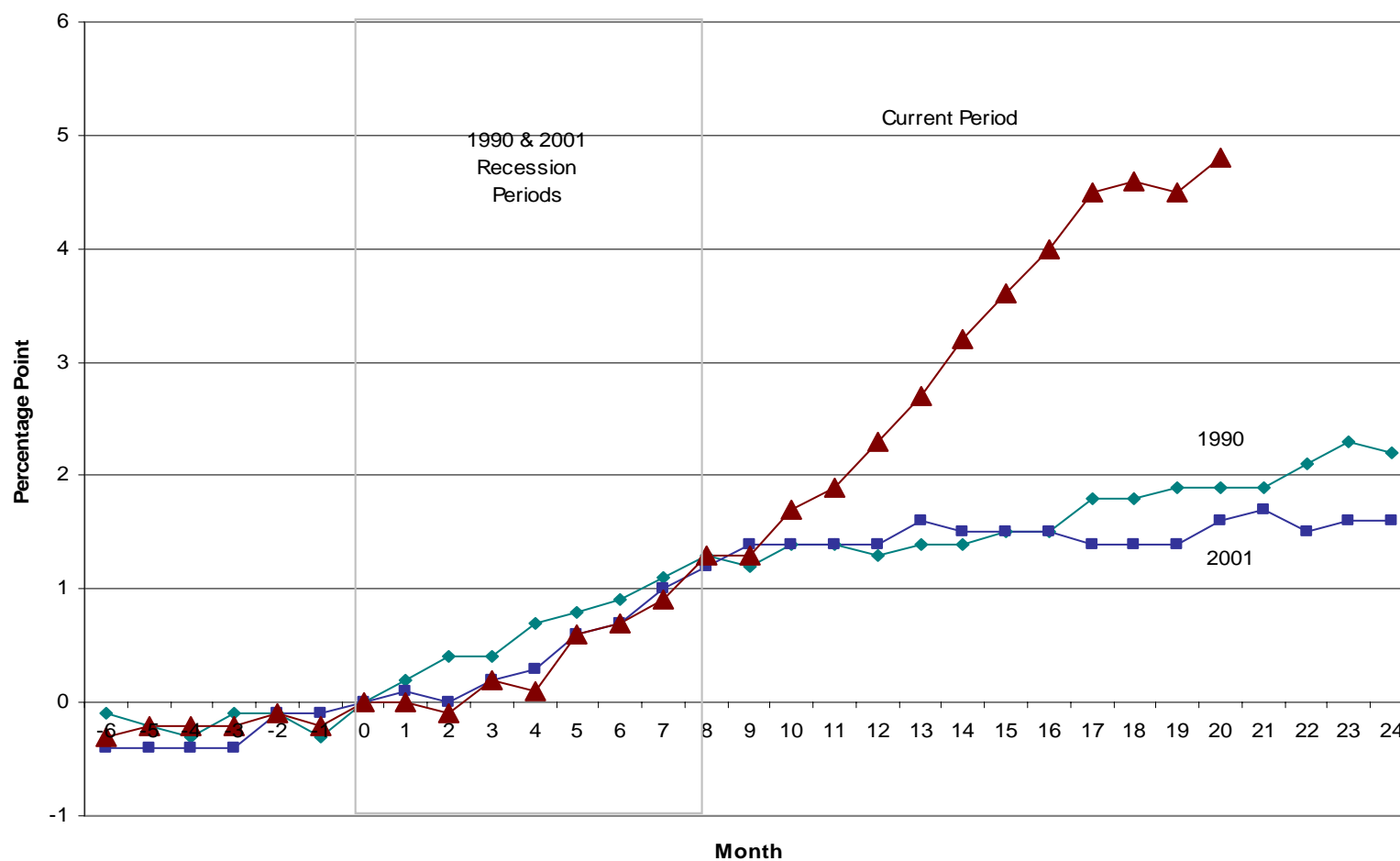
Percentage change in total nonfarm employment, from beginning of recession*, seasonally adjusted



Source: Bureau of Labor Statistics, Current Employment Statistics survey, September 4, 2009.

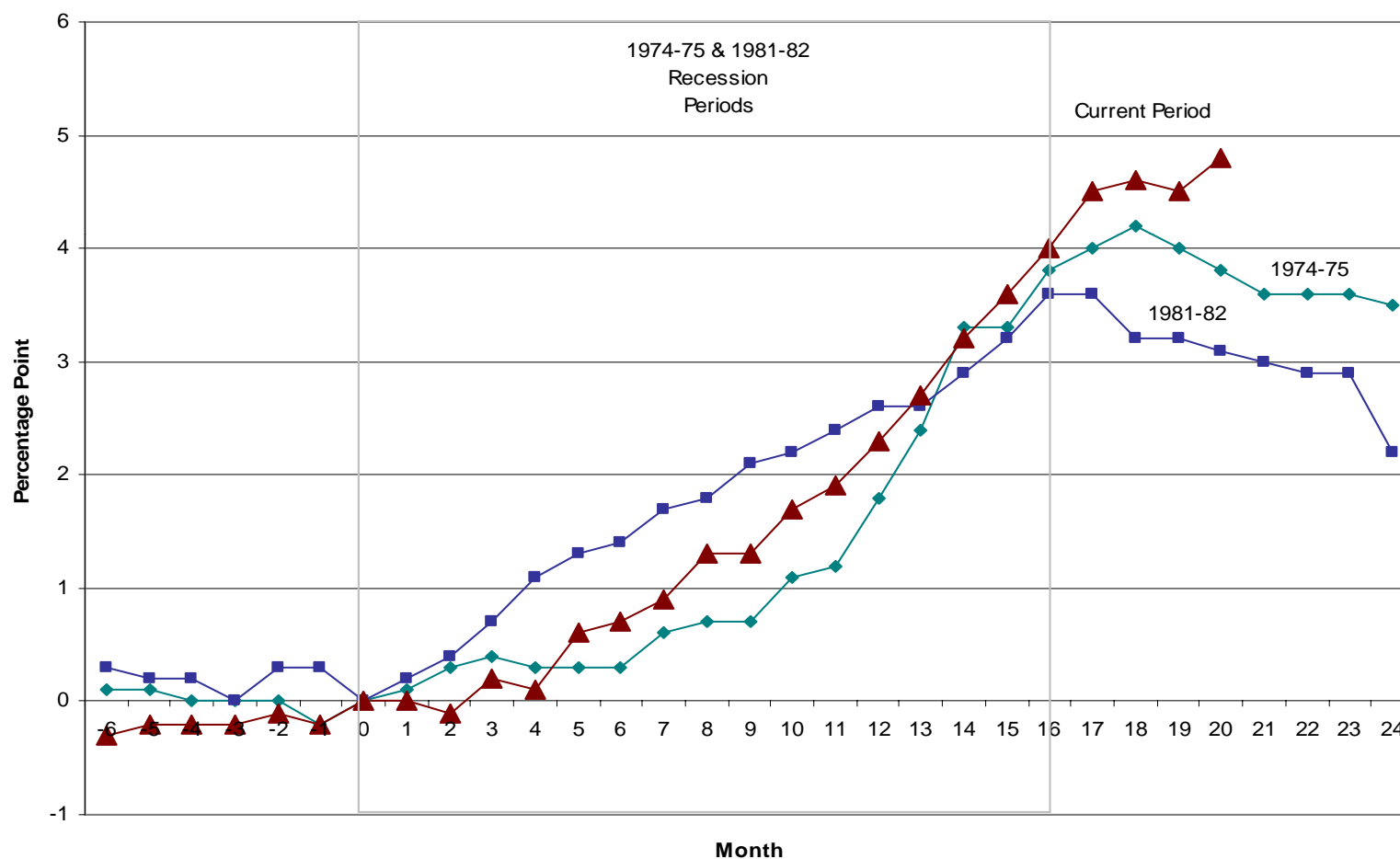
*Note: Business cycle peak as determined by the National Bureau of Economic Research. Most recent two months are preliminary.

Change in the Unemployment Rate for the Current Recession and 1991-92 and 2001 Recessions



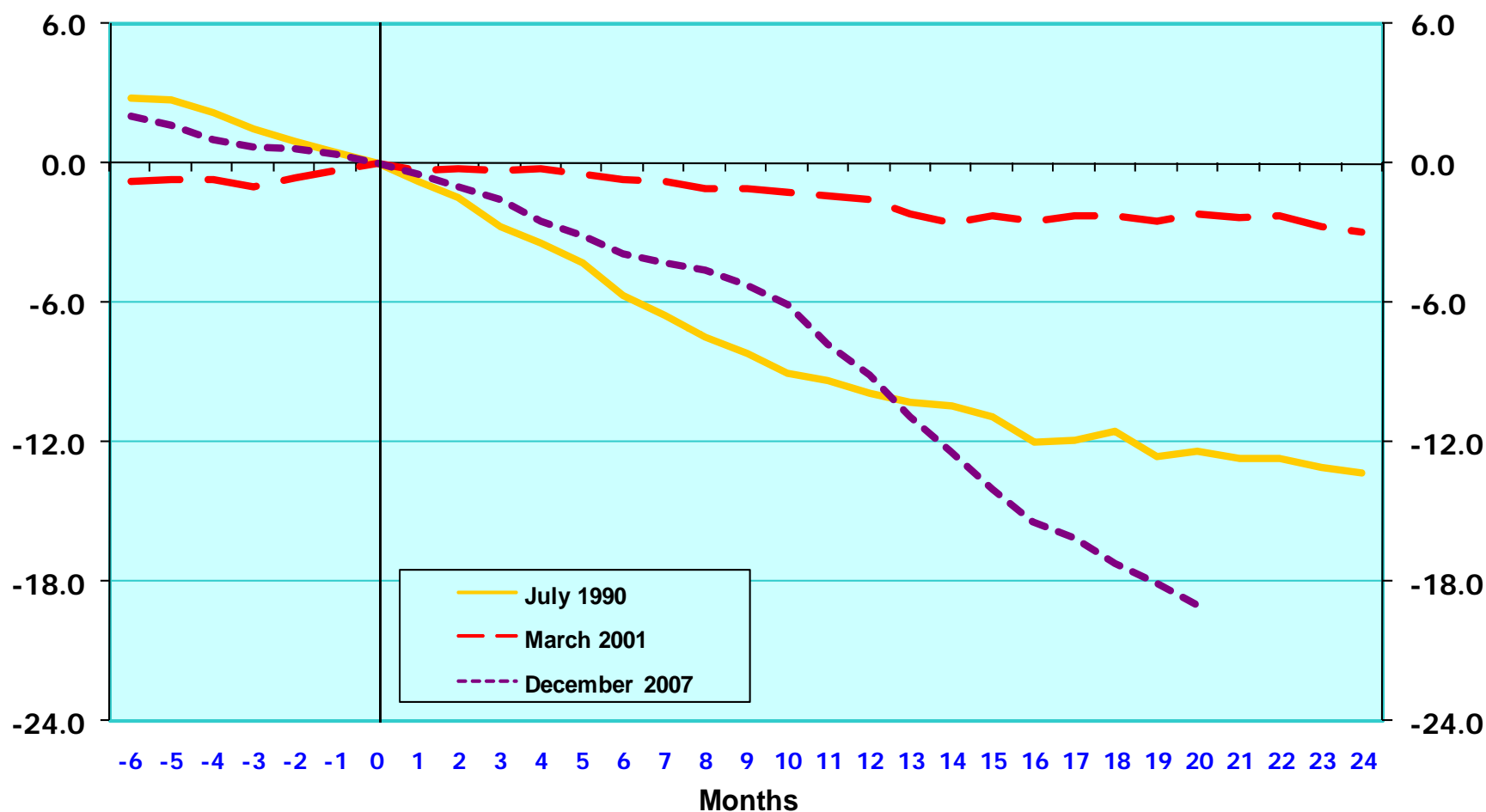
Source: Bureau of Labor Statistics, Current Population Survey, September 11, 2009.

Change in the Unemployment Rate for the Current Recession and 1974-75 and 1981-82 Recessions



Source: Bureau of Labor Statistics, Current Population Survey, September 11, 2009.

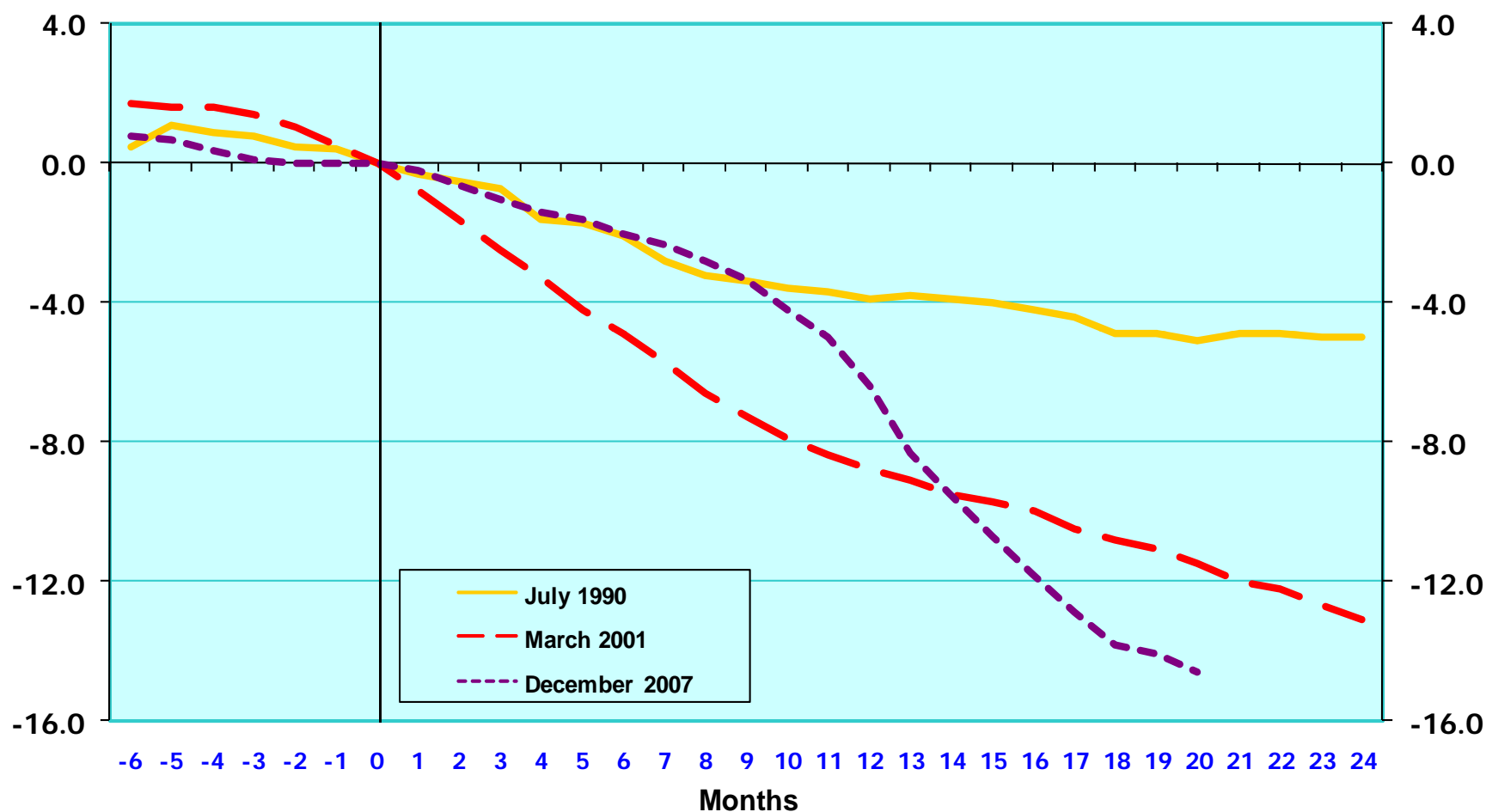
Percentage change in construction employment, from beginning of recession*, seasonally adjusted



Source: Bureau of Labor Statistics, Current Employment Statistics survey, September 4, 2009.

*Note: Business cycle peak as determined by the National Bureau of Economic Research. Most recent two months are preliminary.

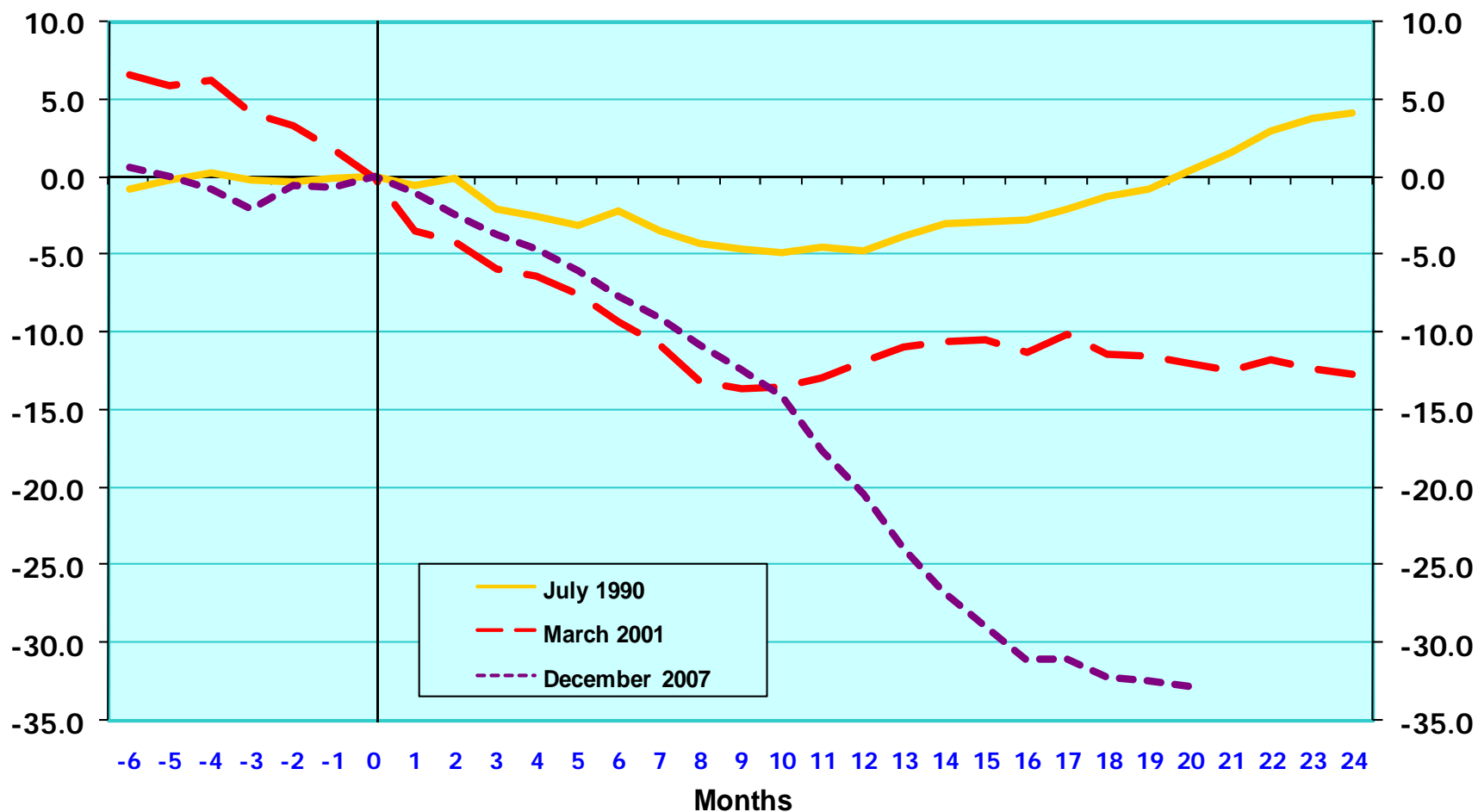
Percentage change in manufacturing employment, from beginning of recession*, seasonally adjusted



Source: Bureau of Labor Statistics, Current Employment Statistics survey, September 4, 2009.

*Note: Business cycle peak as determined by the National Bureau of Economic Research. Most recent two months are preliminary.

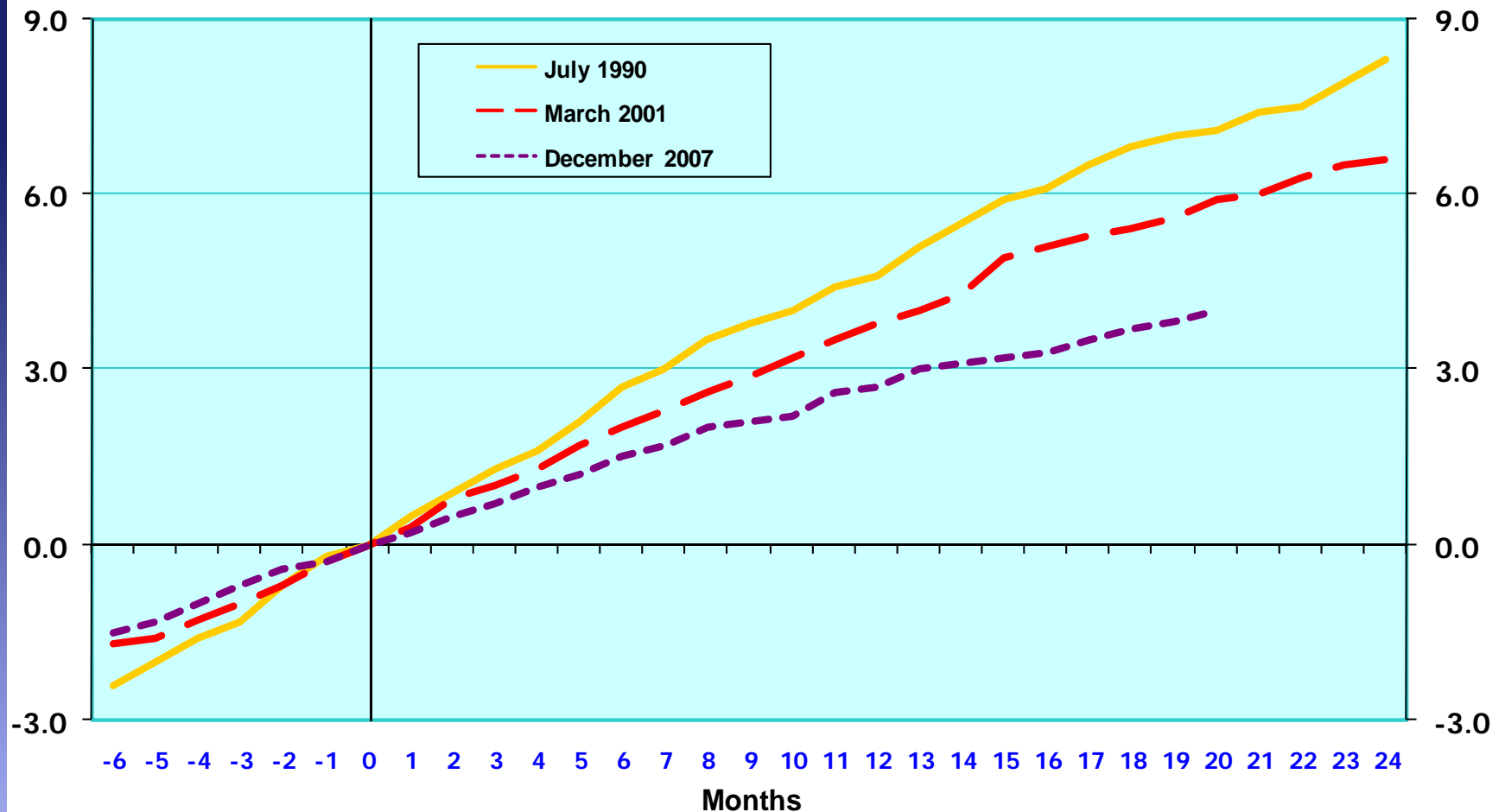
Percentage change in temporary help services employment, from beginning of recession*, seasonally adjusted



Source: Bureau of Labor Statistics, Current Employment Statistics survey, September 4, 2009.

*Note: Business cycle peak as determined by the National Bureau of Economic Research. Most recent two months are preliminary.

Percentage change in education and health services employment, from beginning of recession*, seasonally adjusted



Source: Bureau of Labor Statistics, Current Employment Statistics survey, September 4, 2009.

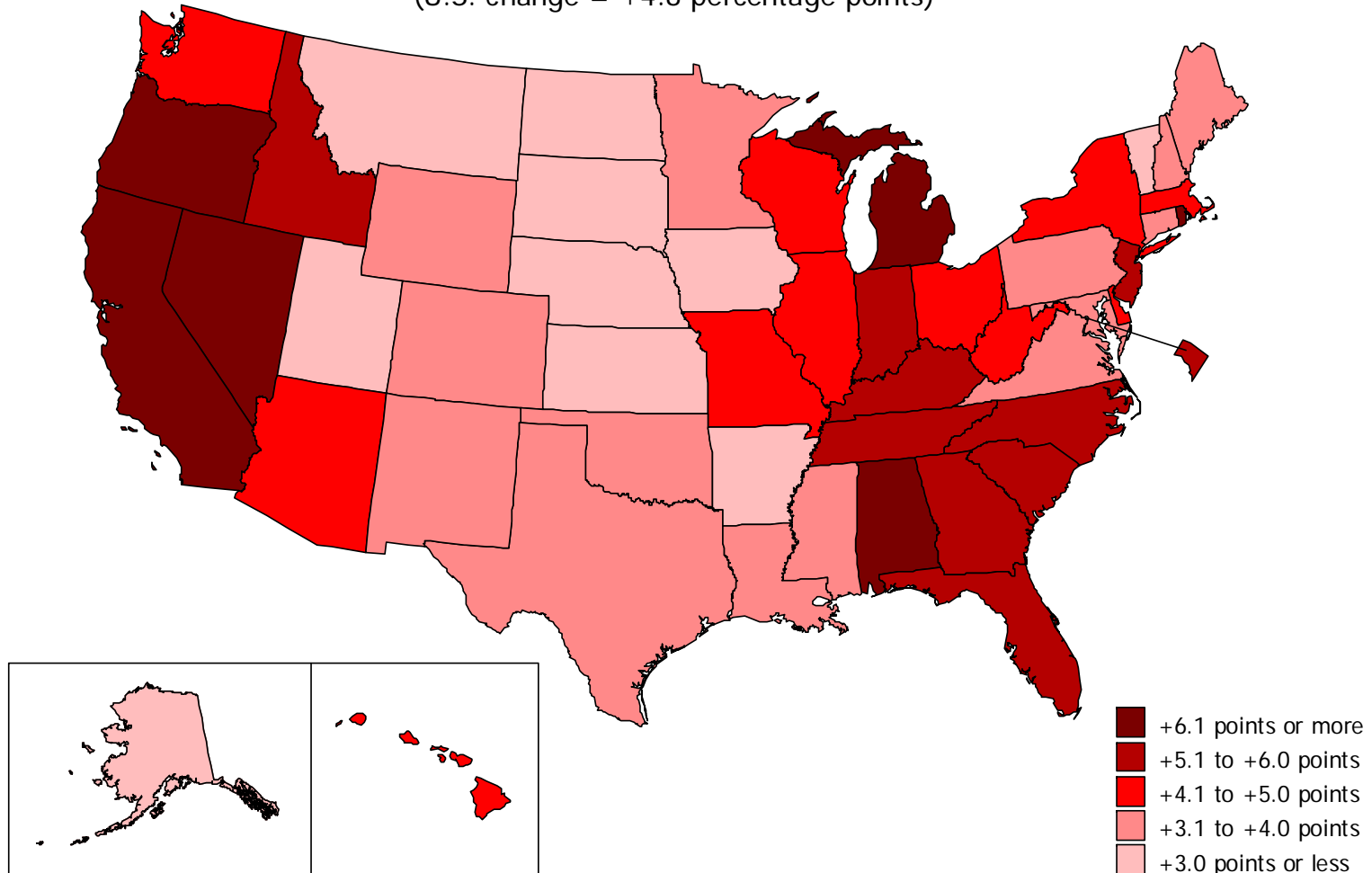
*Note: Business cycle peak as determined by the National Bureau of Economic Research. Most recent two months are preliminary.

(U.S. rate = 9.7 percent)



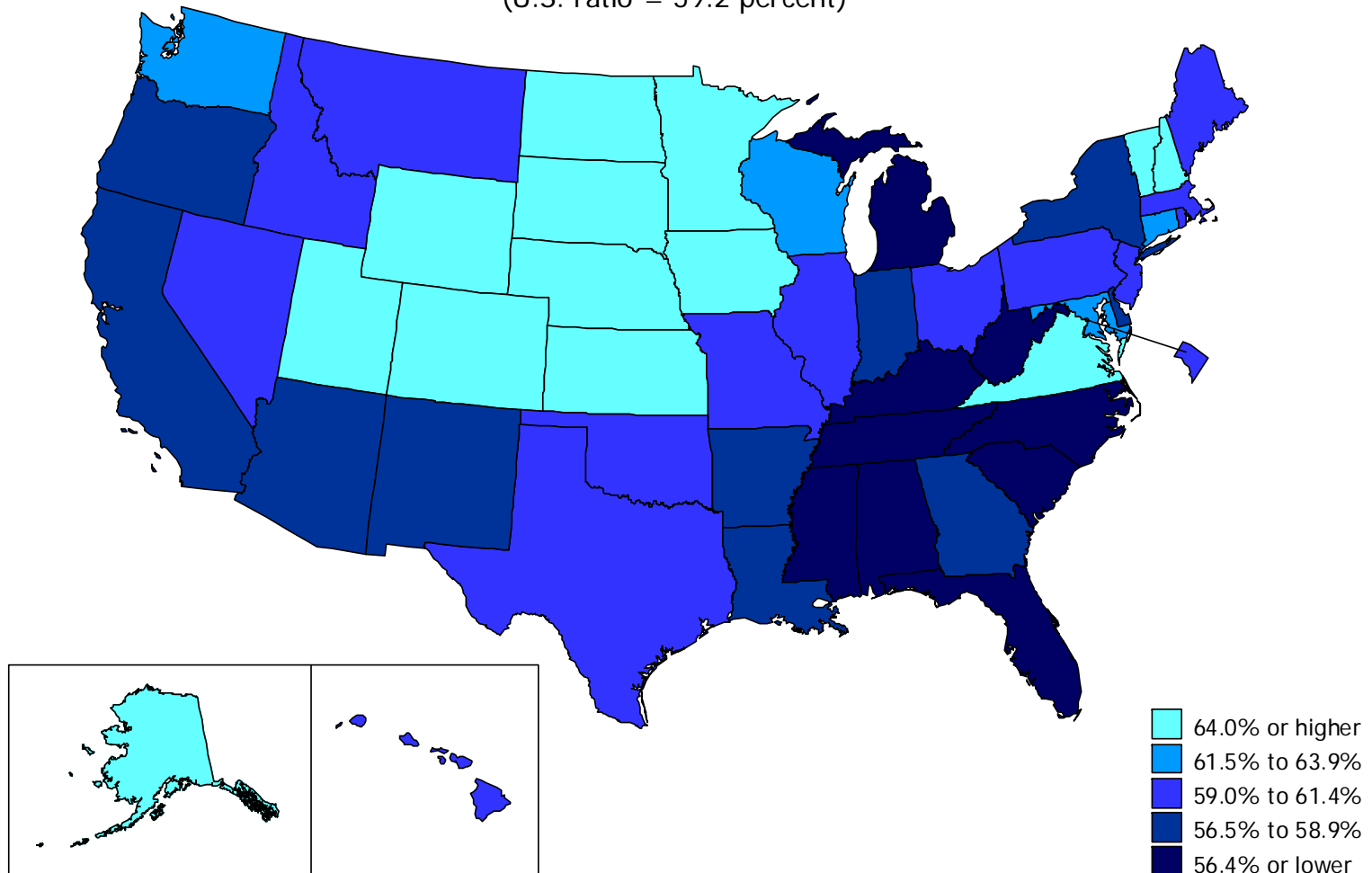
Change in unemployment rates by state, Dec. 2007–Aug. 2009, seasonally adjusted

(U.S. change = +4.8 percentage points)



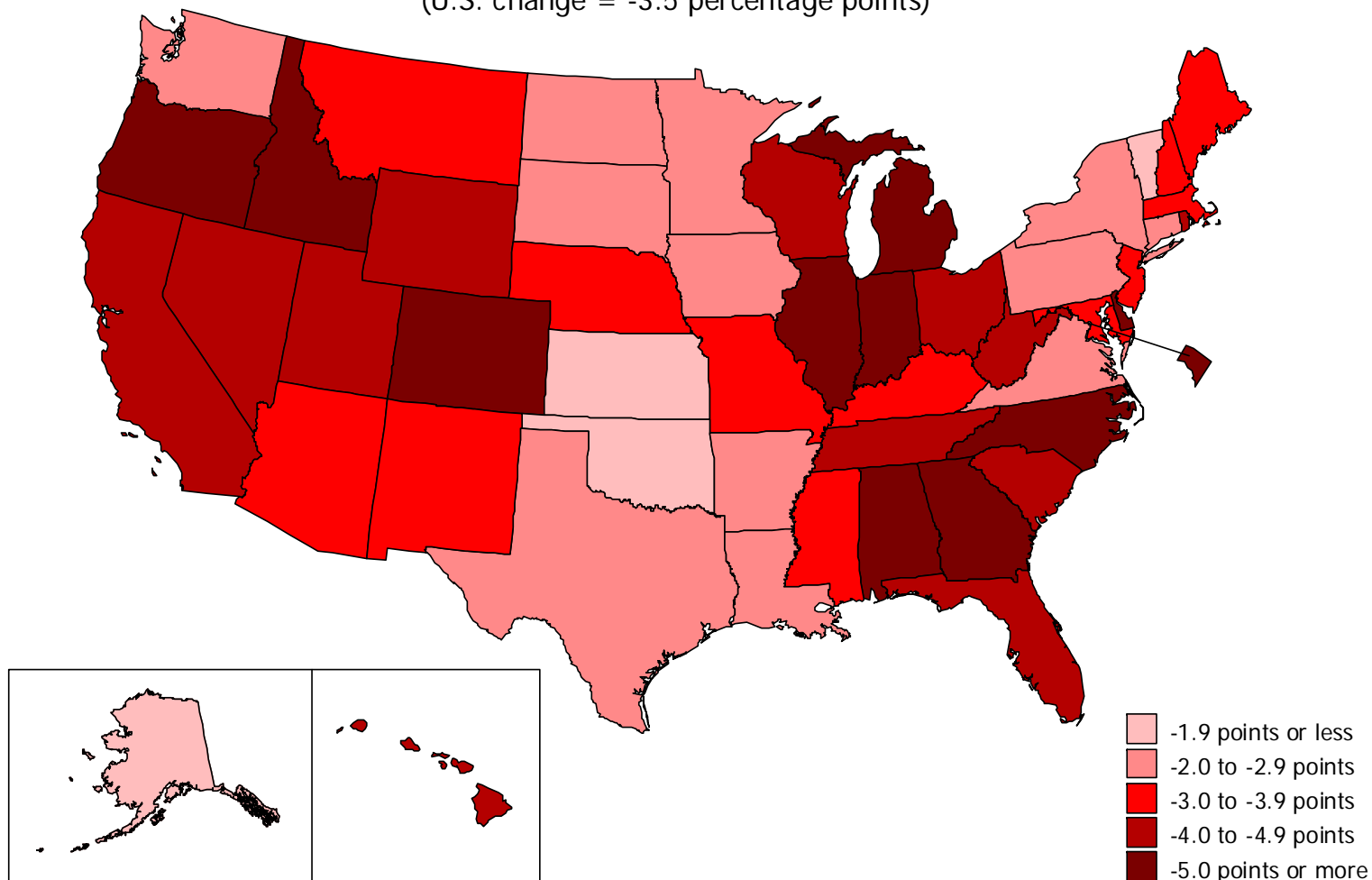
Employment-population ratios by state, August 2009, seasonally adjusted

(U.S. ratio = 59.2 percent)



Change in employment-population ratios by state, Dec. 2007– Aug. 2009, seasonally adjusted

(U.S. change = -3.5 percentage points)

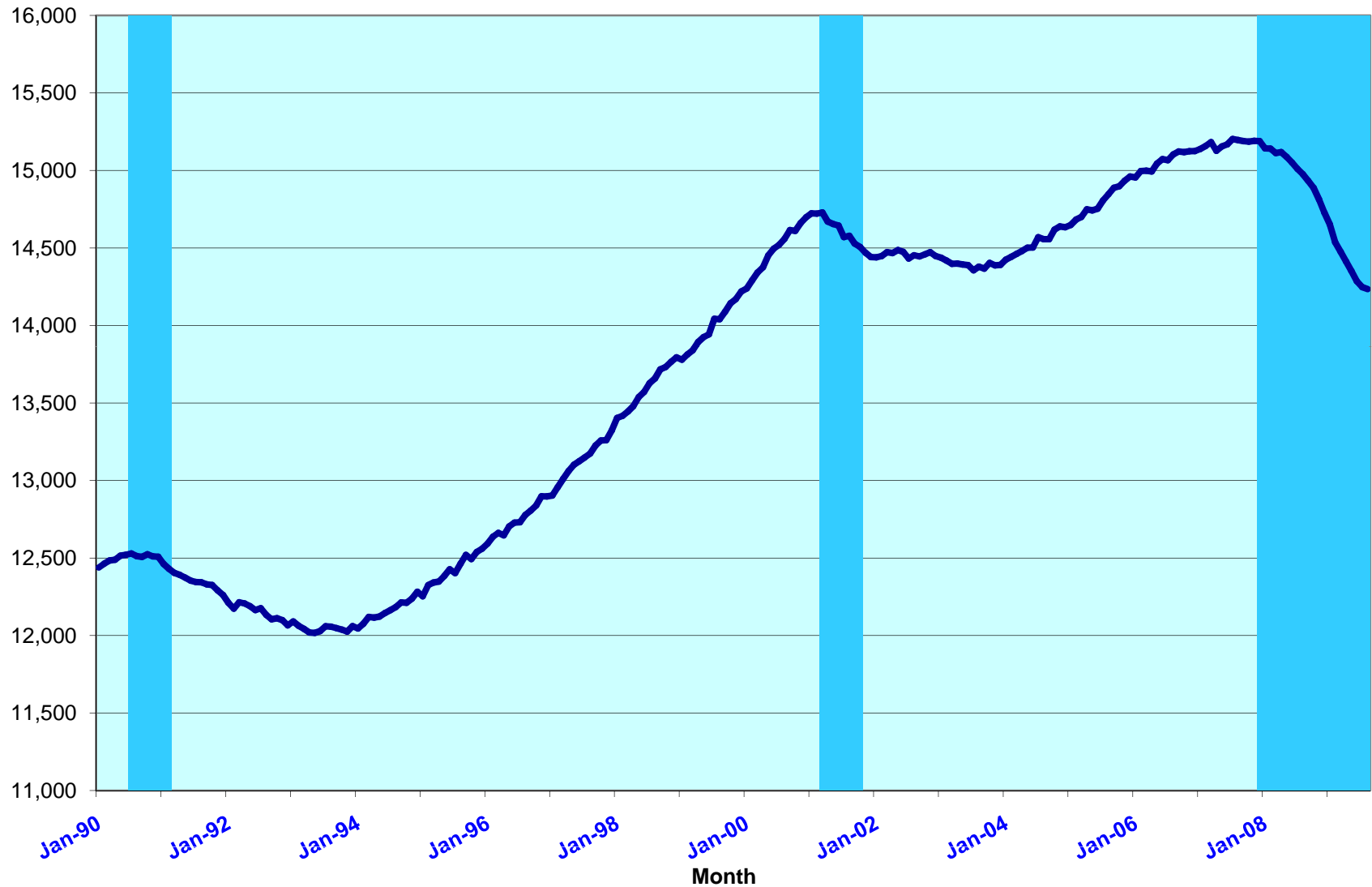


(U.S. change = -5.0 percent)



California total nonfarm employment

seasonally adjusted, in thousands

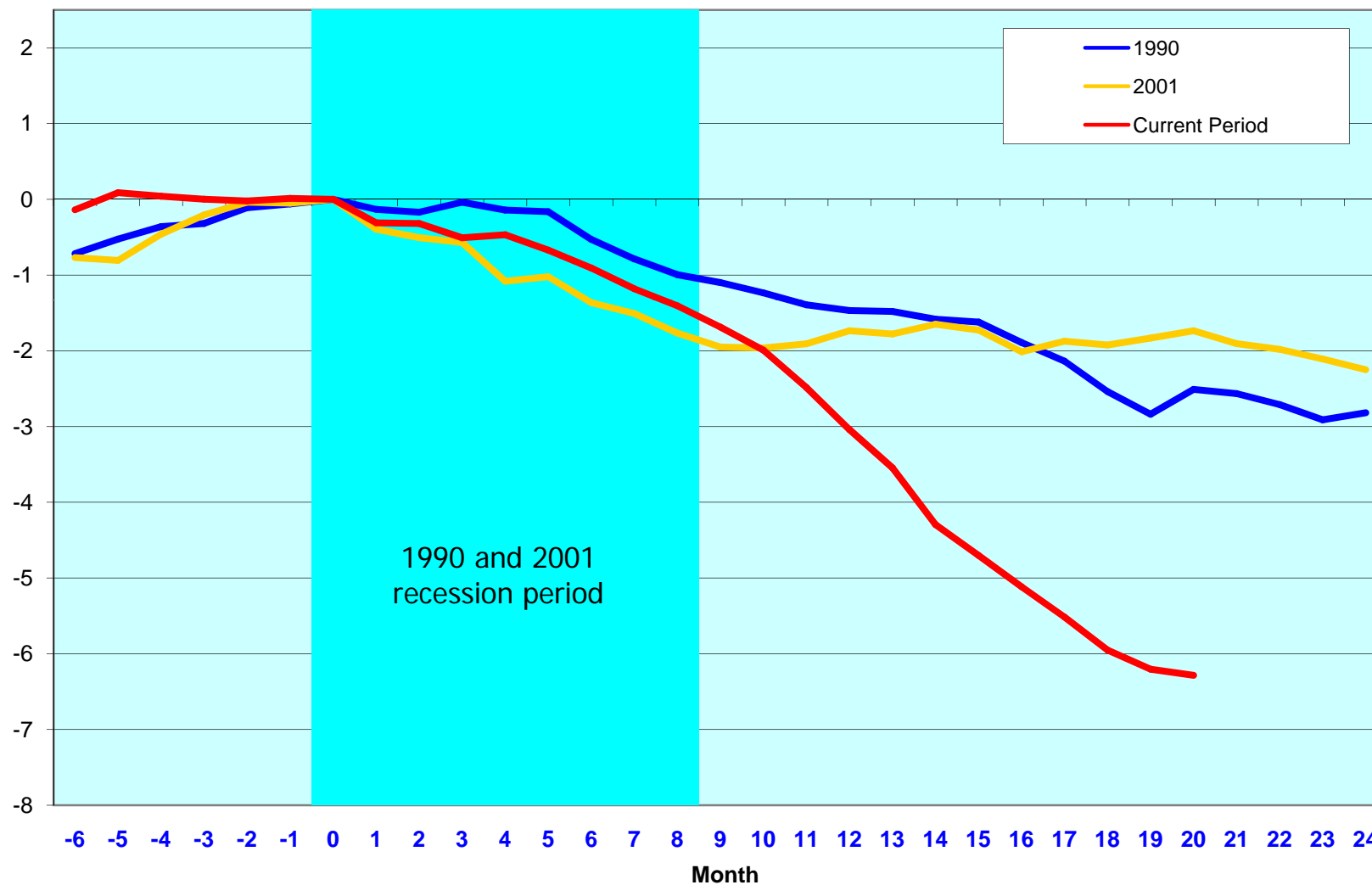


Source: Bureau of Labor Statistics, Current Employment Statistics, September 18, 2009

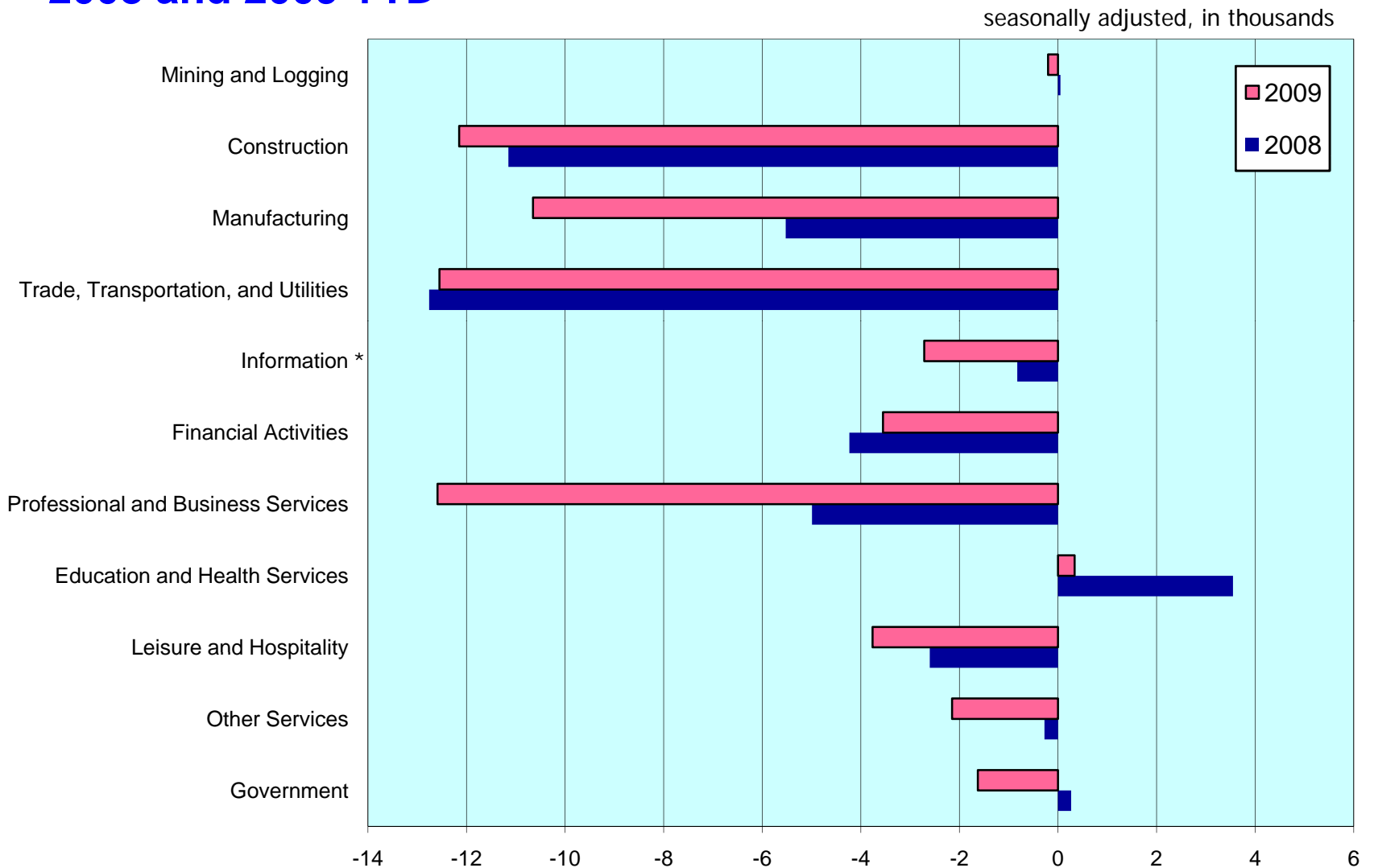
Note: Recessionary periods as determined by National Bureau of Economic Research. Most recent month is preliminary.

Percent change in California total nonfarm employment, from beginning of recession

Seasonally Adjusted



Average monthly changes in California employment 2008 and 2009 YTD

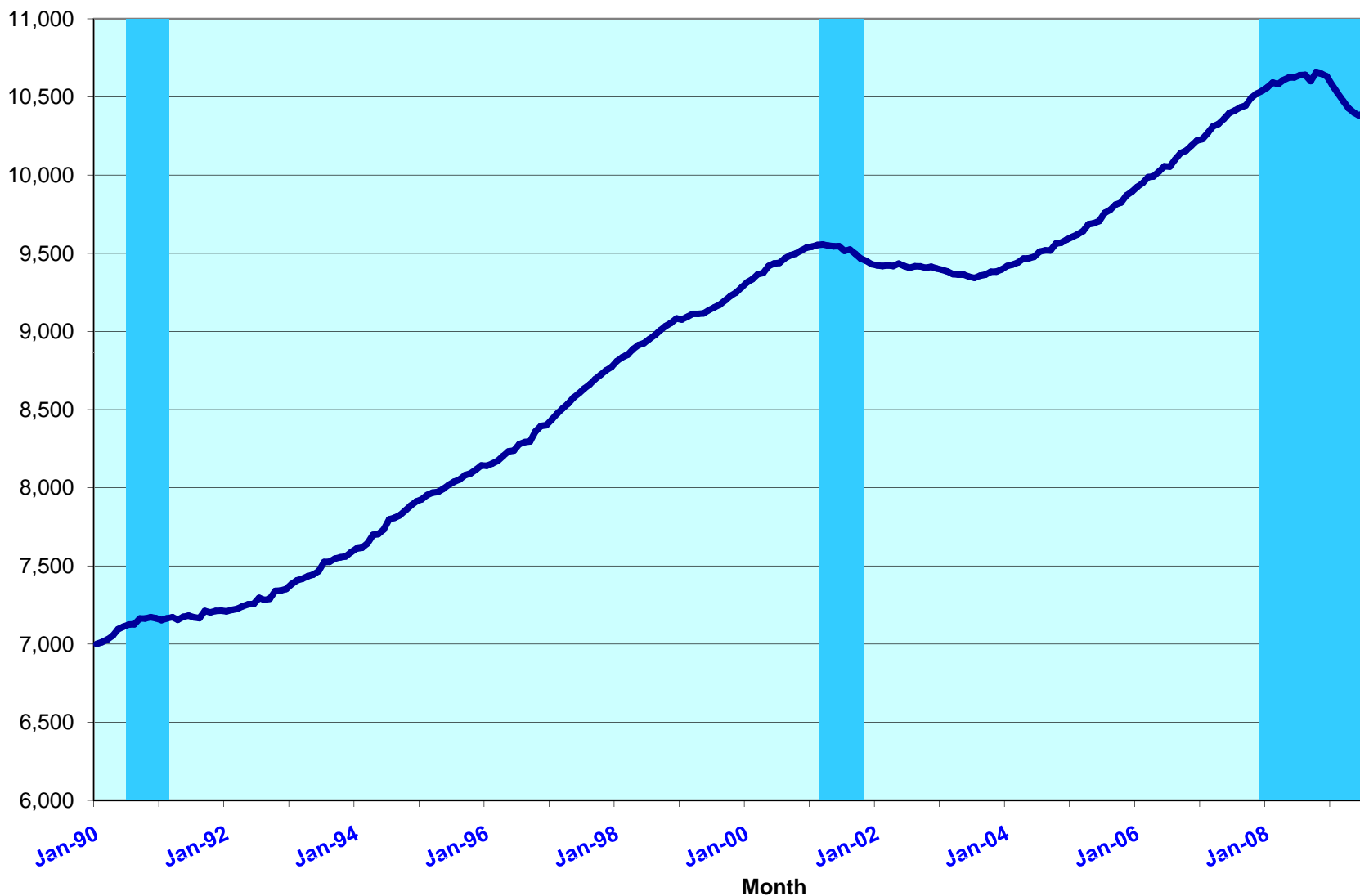


Note: Information data in California are not seasonally adjusted.

Source: Bureau of Labor Statistics, Current Employment Statistics, September 18, 2009

Texas total nonfarm employment

seasonally adjusted, in thousands

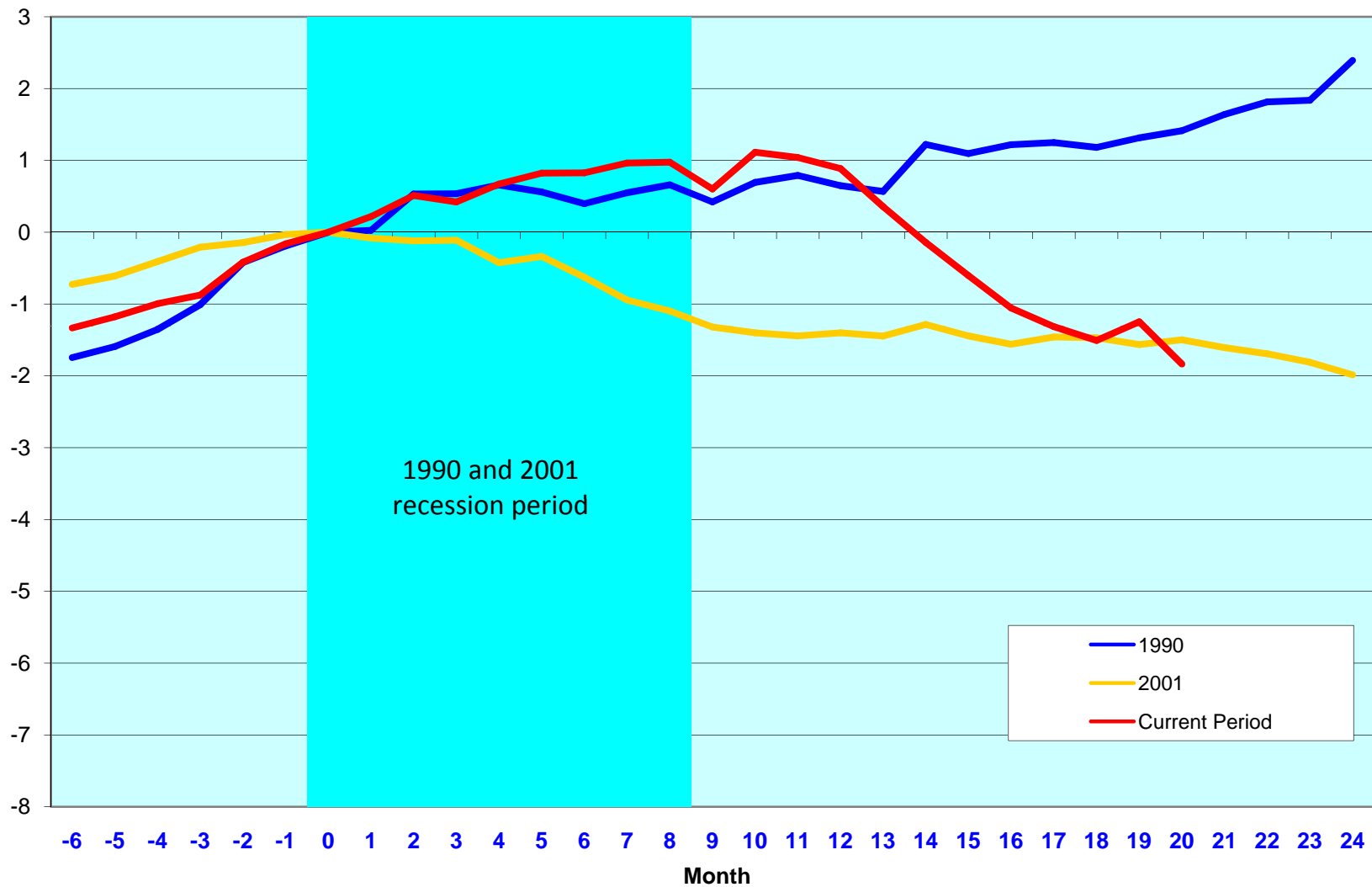


Source: Bureau of Labor Statistics, Current Employment Statistics, September 18, 2009

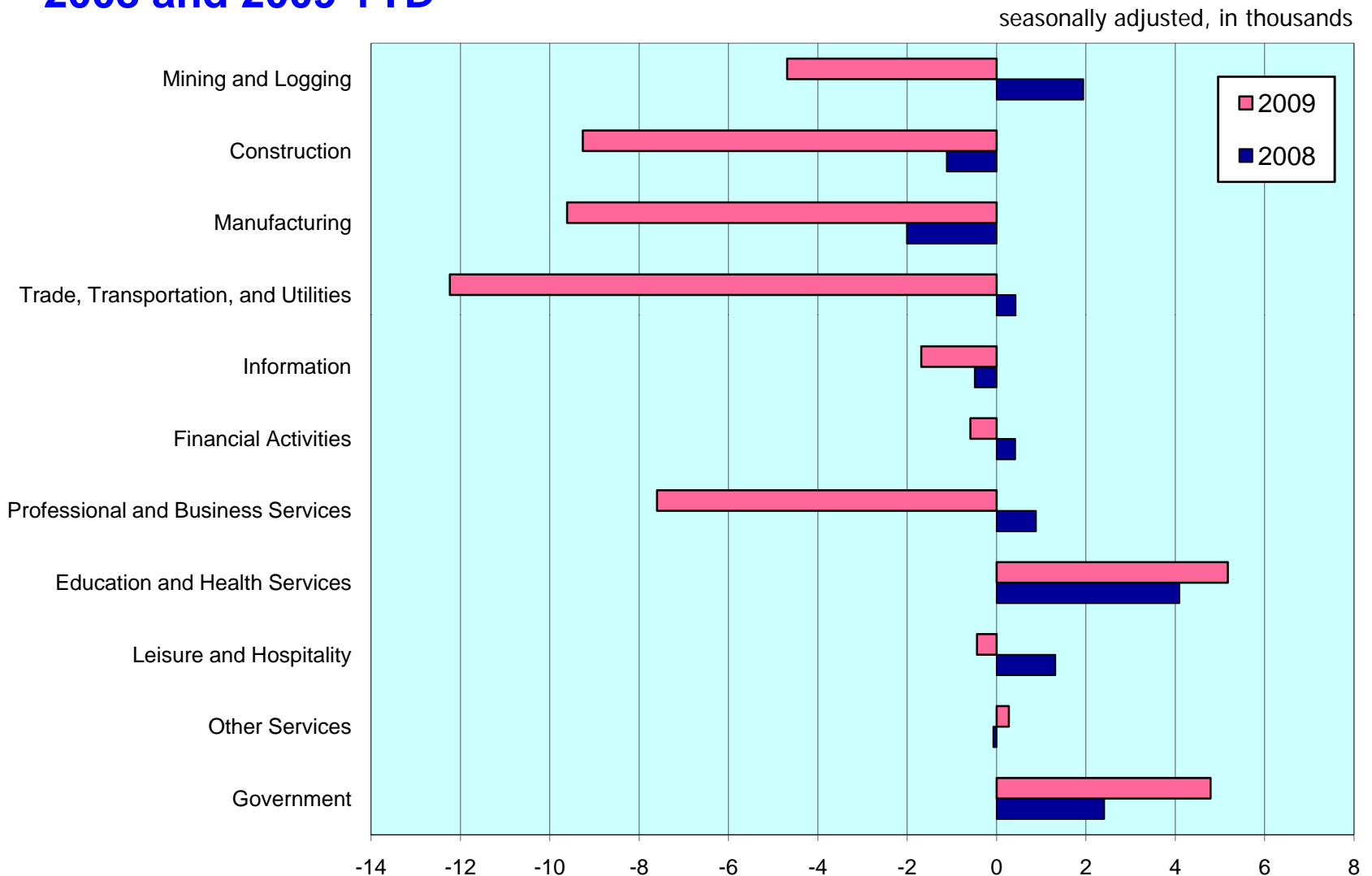
Note: Recessionary periods as determined by National Bureau of Economic Research. Most recent month is preliminary.

Percent change in Texas total nonfarm employment, from beginning of recession

seasonally adjusted

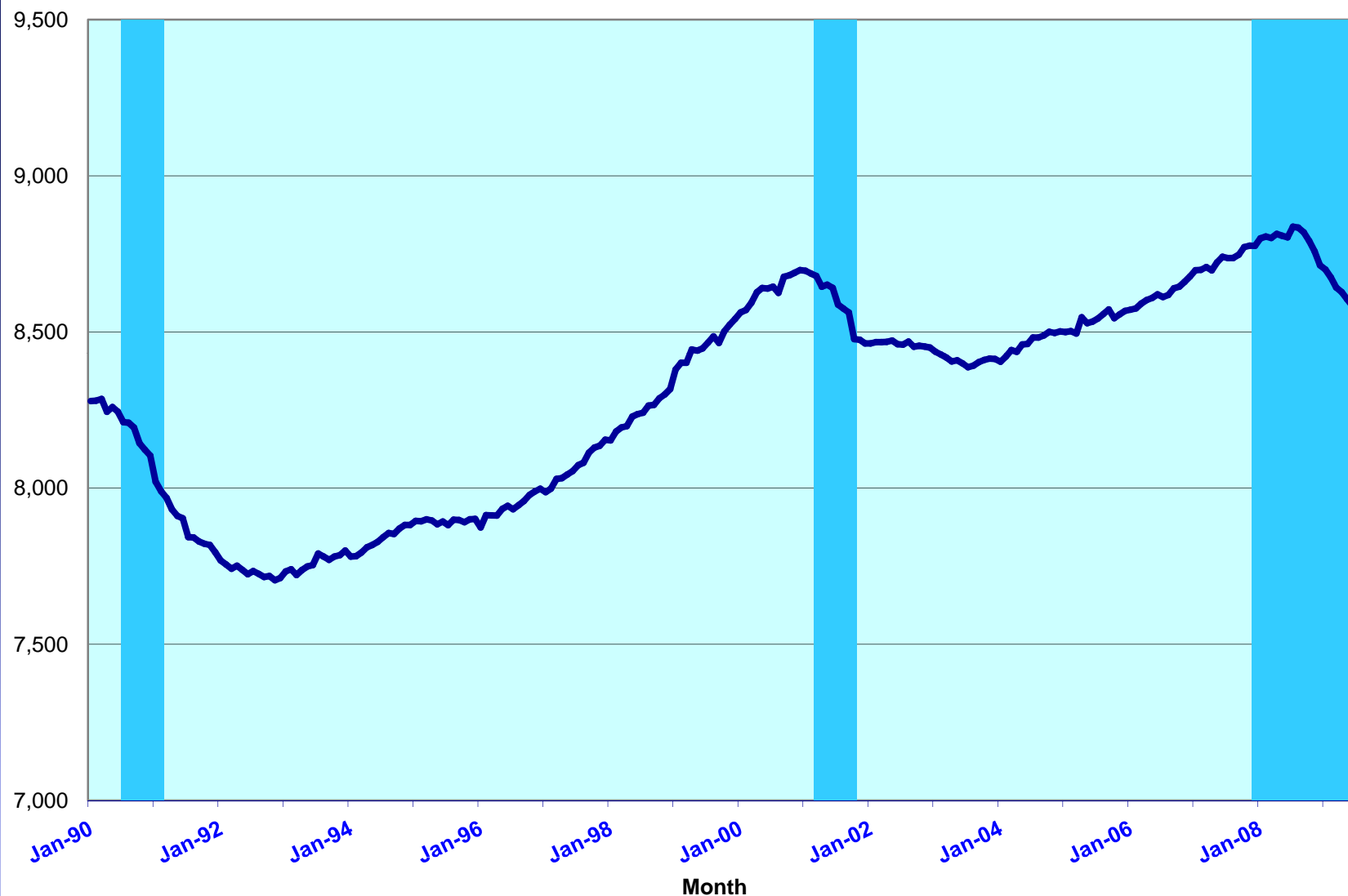


Average monthly changes in Texas employment 2008 and 2009 YTD



New York total nonfarm employment

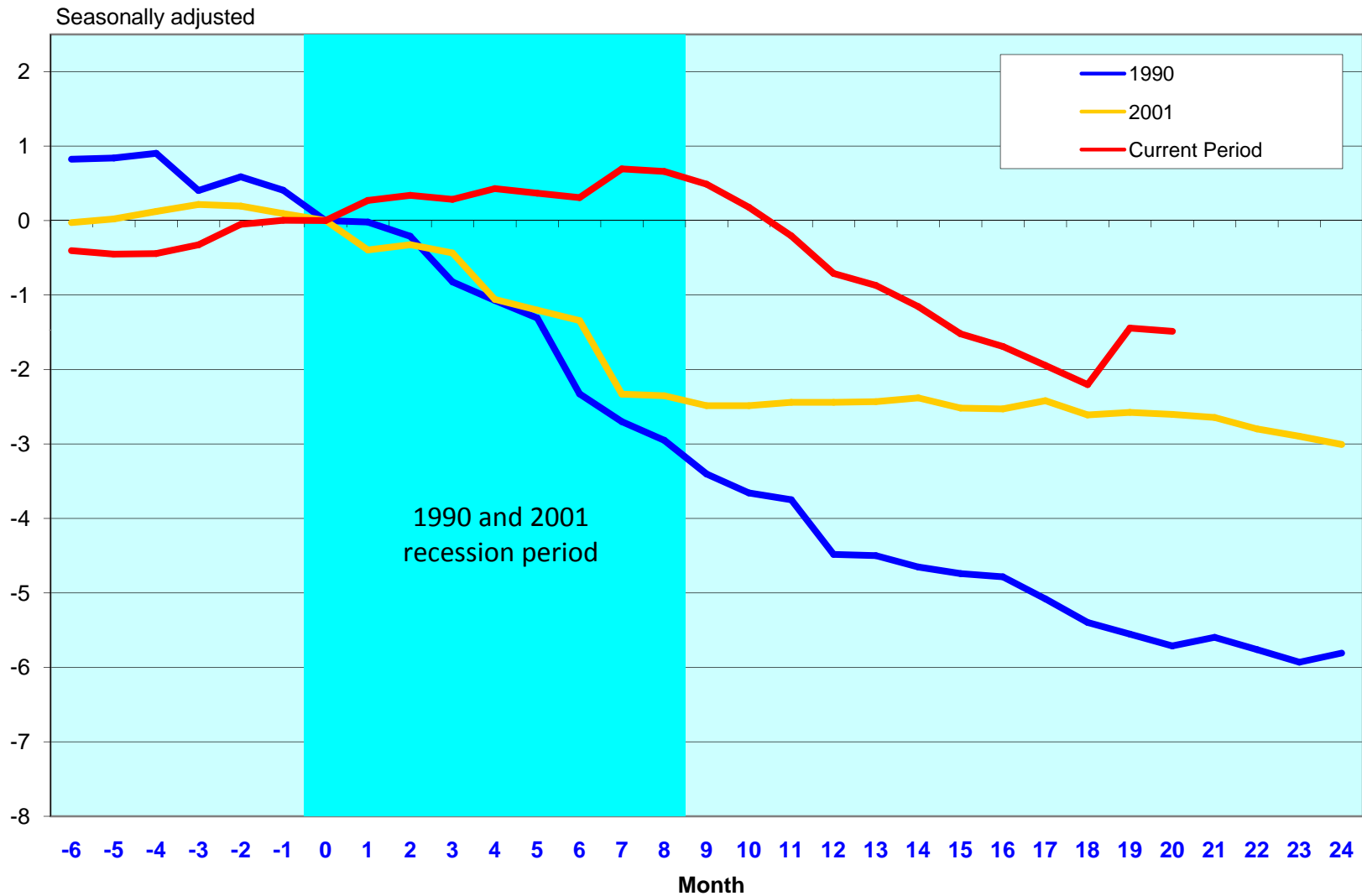
seasonally adjusted, in thousands



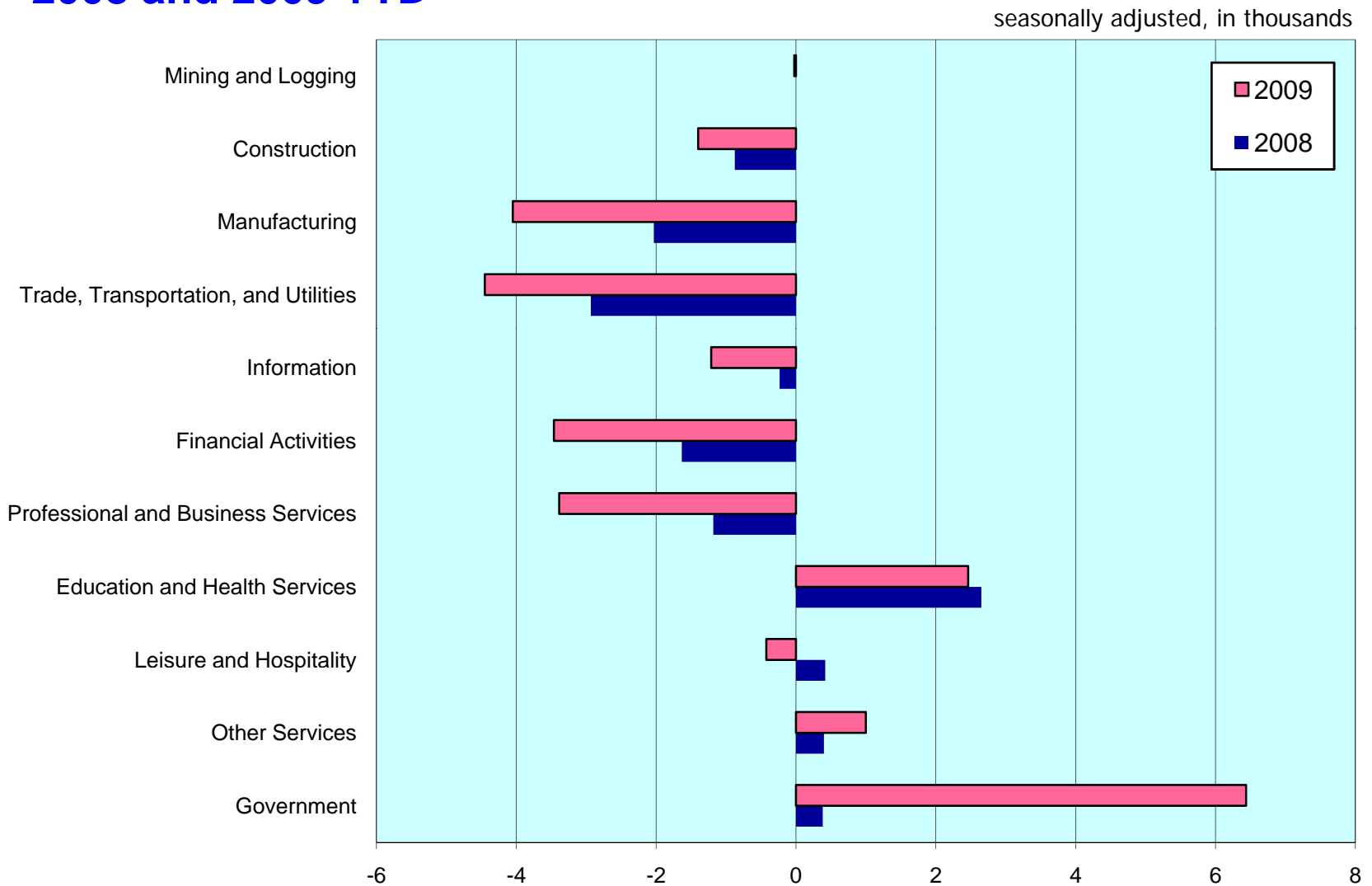
Source: Bureau of Labor Statistics, Current Employment Statistics, September 18, 2009

Note: Recessionary periods as determined by National Bureau of Economic Research. Most recent month is preliminary.

Percent change in New York total nonfarm employment, from beginning of recession

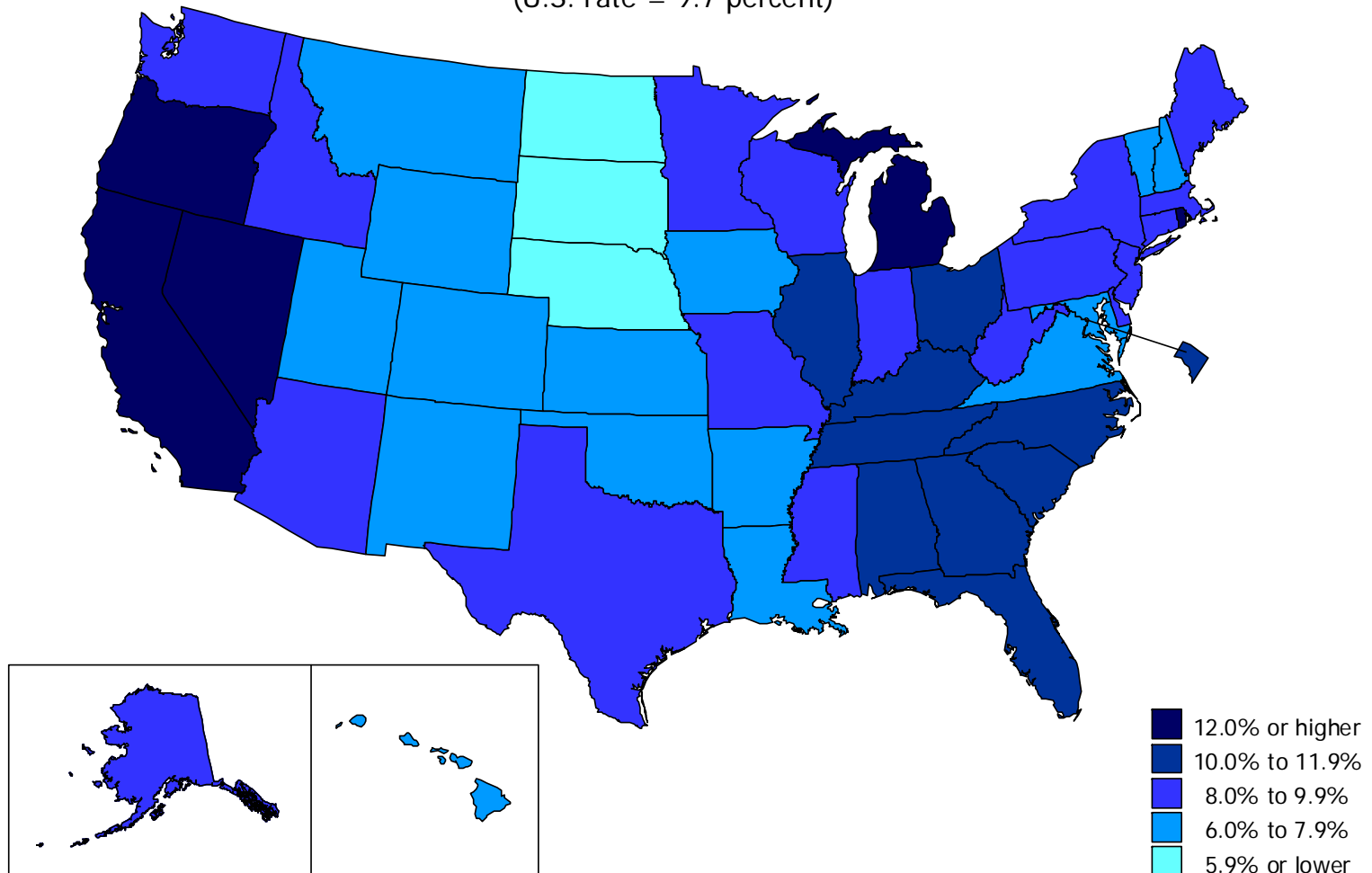


Average monthly changes in New York employment 2008 and 2009 YTD



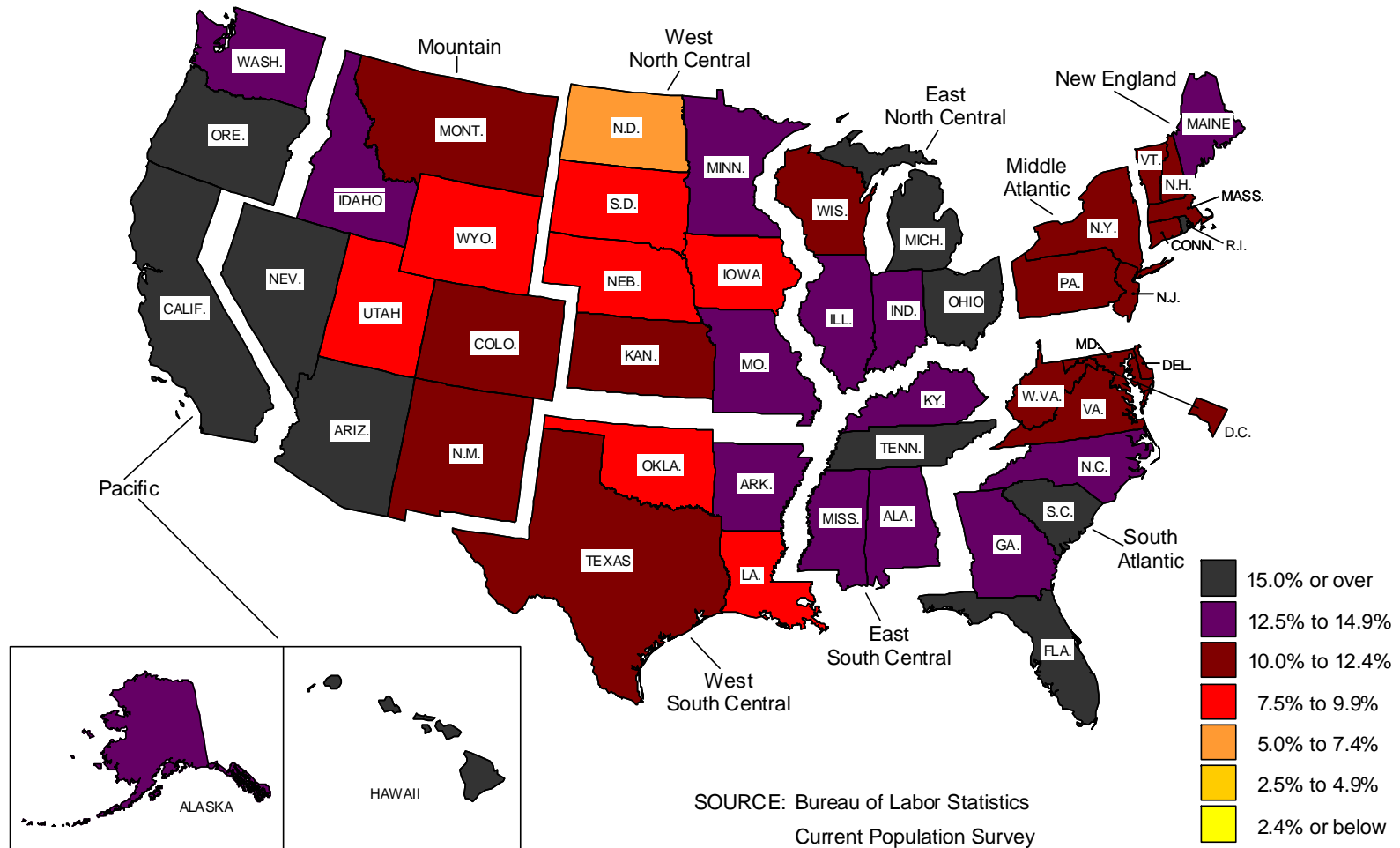
Unemployment rates by state, August 2009, seasonally adjusted

(U.S. rate = 9.7 percent)



U6: Alternative measures of labor underutilization in States, not seasonally adjusted, 2008:3 – 2009:2 averages

(U.S. rate = 13.7 percent)



Contact Information

Thomas Nardone
Assistant Commissioner
OCEA/OEUS
202-691-6379
nardone_t@bls.gov



www.bls.gov