

# Using the Census of Governments The County Viewpoint



**JACQUELINE J. BYERS**  
**DIRECTOR OF RESEARCH AND OUTREACH**  
**NATIONAL ASSOCIATION OF COUNTIES**



# Using the Census of Governments



- Research
  - Comparability data
  - Comparison on specific data elements
    - ✦ Population
    - ✦ Geography
    - ✦ Budget Size
    - ✦ Debt



# Using the Census of Governments



- Research (cont)

- ✦ Expenditure categories
- ✦ K-12 and secondary education data
- ✦ Revenue sources
- ✦ Federal funds received, etc.
- ✦ County government employees

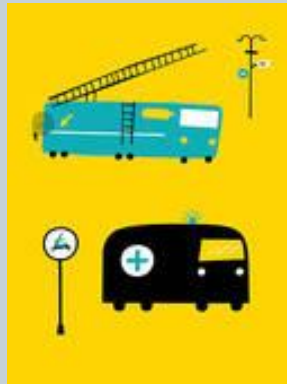


# Using the Census of Governments



- **County Structure**

- Update of the organizational structure of county governments by state
- Number of counties and consolidated governments
- Structure includes types of authorities and special districts



# Using the Census of Governments



- **Data**
  - Ability to view revenue sources and expenditures for a time specific
  - View expenditures by recipient line items
  - View revenue by source
  - Excel format, users can manipulate data files for their own data needs
  - Former PDF publications were also helpful

# Using the Census of Governments



- NACo's County Intelligence Connection
  - Members only database
  - Using 2007 data
  - Interactive with other data files
  - Create selected data displays for comparability



# Using the Census of Governments



- **Reference**

- Share existence of data with researchers, media, students, etc.
- Aggregate amounts for reports to congress and administration officials
- Calculate percentage of total budget expenditure by line item for lobbying efforts
- Calculate percentage of revenue from various sources to influence legislation