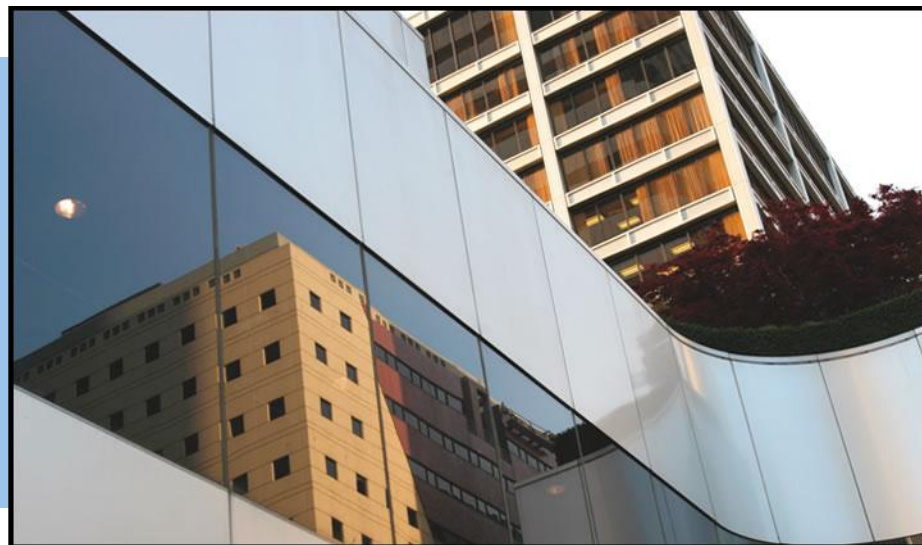


November 2012



Data Dissemination & Product Development

A View from the User Community

Who We Are



CREC CENTER FOR
REGIONAL ECONOMIC
COMPETITIVENESS

CRECONLINE.ORG

The Center for Regional Economic Competitiveness (CREC) is an independent, not-for-profit organization founded to provide policy-makers from around the world with the information and technical assistance they need to formulate and execute innovative, regional, job-creating economic strategies.

SERVICES

- Economic Development Consulting
- Workforce Intelligence and Projection Consulting
- Regional Training and Capacity Building
- Professional Organization and Network Management



C2ER

THE COUNCIL FOR COMMUNITY
AND ECONOMIC RESEARCH



C2ER.ORG

The Council for Community and Economic Research (C2ER) promotes excellence in community and economic research by improving data quality and availability by fostering learning about regional economic analytic methods.

SERVICES

- Assistance with regional economic/workforce strategic planning, including building regional capacity and public-private sector meeting facilitation
- Customized regional economics and data training
- ACCRA COST OF LIVING INDEX (COLI)
- JOURNAL OF APPLIED RESEARCH IN ECONOMIC DEVELOPMENT
- CERTIFIED COMMUNITY RESEARCHER (CCR) CERTIFICATION
- STATE BUSINESS INCENTIVES DATABASE
- Annual C2ER Research Conference
- Legislative advocacy



LMI Training Institute
Navigating the World of Labor Market Information



LMIONTHEWEB.ORG

The Labor Market Information (LMI) Training Institute advances the art and science of labor market information among LMI professionals and its customer community.

SERVICES

- Basic and applied labor market information training and certification
- Customized workforce data and economics training
- E-learning curriculum delivery development
- Webinars on current workforce information topics
- Labor market information and GIS training for front-line staff and advanced data users
- Annual LMI Forum

apdu



APDU.ORG

The Association of Public Data Users (APDU) is a national network that links users, producers, and disseminators of government and open-access statistical data.

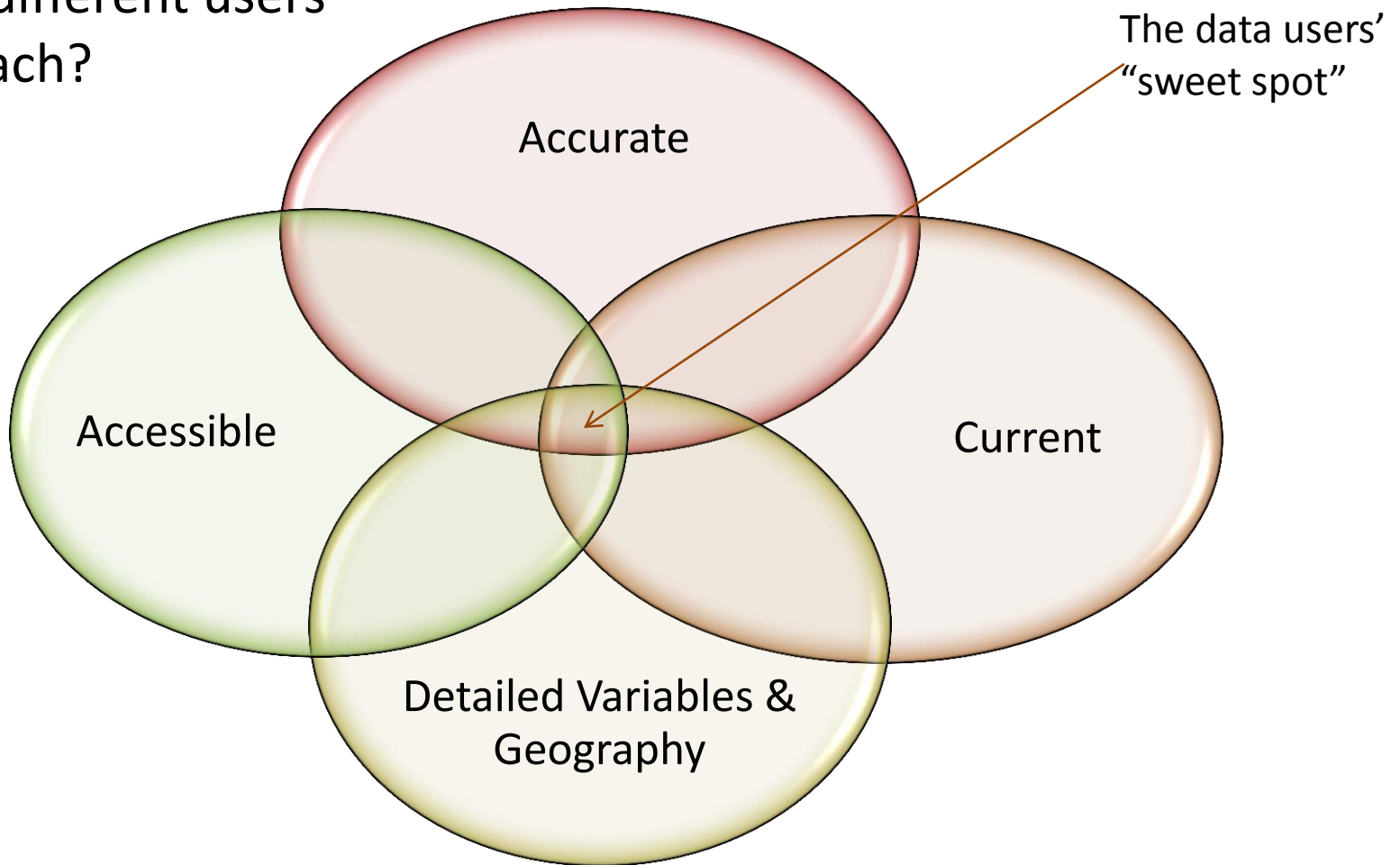
SERVICES

- Identification of relevant public data sources for specific projects
- Assistance with accessing data in a cost-effective and appropriate manner
- Establishment of effective two-way communication between data producers and users
- Weekly updates tracking public data issues, releases, and "Calls for Comment"
- Legislative advocacy

Data User Perspective:

Characteristics of “Good Data”

How do different users define each?



About This Project for the Data Dissemination Working Group

10 training sessions for Census, BLS, BEA, ESA staff
(March-May)

Review lessons learned and identify potential
“innovations” with agency leadership (June-July)

Propose innovation and dissemination plans to a
roundtable of users at in-person user forum (September)
and **webinars (November)**

Conduct series of facilitated agency working sessions
based on inputs (December)

Organize a multi-agency DDG working session and final
lessons learned report (January-February)

Our Goals for This Webinar

1. Review agency plans for data “innovation” and dissemination
2. Provide user feedback on the agency plans
 - a) Please type questions in webinar chat box
 - b) Questions will be answered after presentation

Thank You!

CREC Project Team

Mark White mwhite@crec.net

Dean Frutiger dfrutiger@crec.net

Cathy Renault
crenault@innovationpolicyworks.com

Ken Poole kpoole@crec.net